

Wyoming State Planning Grant Project



Covering Wyoming's Uninsured

“Seeking solutions to increasing access to health insurance coverage for the uninsured.”

The attached information was compiled by the State Planning Grant Project.

For additional information, please contact:

**Linda O’Grady
State Planning Grant Project
6101 Yellowstone Road, Suite 210
Cheyenne, WY 82002
307-777-5472
lograd@state.wy.us**

**Funding for the SPG Project provided by a grant
from the Health Resources & Services Administration.**

Wyoming Uninsured Statistics

Historical Health Insurance Tables – Exhibit 1

These tables use the U.S. Census Bureau Current Population Survey (CPS) to track uninsured trends for ages under 18 and from 18 through 64. This is the standard source used in states where annual state surveys are not done.

Wyoming rates have remained fairly constant over the past 10 years ranging from 15.3% in 1994 to 15.9% in 2003. However, the numbers of uninsured under age 18 decreased from 13.5% in 1994 to 12.5 in 2003 while the number of uninsured in the 18-64 age range increased from 18.48% in 1994 to 20.26 in 2003.

Current Population Survey Annual Social and Economic Supplements – Exhibit 2

The Census Bureau also provides 3 year averages that might be more accurate than annual estimated on a state basis; however, they are not broken down by age.

For the years 2000-2002, Wyoming was ranked eleventh highest among the states in percent of people without health insurance at 16.4%. For the years 2001-2003, Wyoming was ranked thirteenth highest among the state in percent of people without health insurance at 16.5%.

Wyoming Special Tabulation – Exhibit 3

At the request of the Wyoming SPG Project, a special tabulation was provided by the Census Bureau based on a 3 year average from the CPS, Annual Social and Economic Supplement 2002-2004. This tabulation calculates the number of uninsured by age and income level in Wyoming.

This report indicated that 80,000 Wyoming residents were uninsured and that 40,000 of the uninsured were in households with income less than 200% of the federal poverty level. Of the 80,000 uninsured, 64,000 were in the age group 19 to 64.

SHADAC – State Health Data Assistance Center - Exhibit 4

The State Health Access Data Assistance Center (SHADAC) produces a State Health Access Profile to help states monitor rates of health insurance coverage.
<http://www.shadac.umn.edu/maps2/Profiles/WY.pdf>

The most recent report estimated that the average amount of hospital uncompensated care spending per population under 200% FPL in Wyoming is \$236. If 40,000 Wyoming residents under 200% of the FPL are uninsured, this could conservatively amount to \$9 million in uncompensated care annually.

Wyoming Low Income Uninsured Children Under 19 Years of Age – Exhibit 5

This table was created by the Census Bureau to track uninsured low income children. The table uses 3 year averages and focuses on children 19 and under who are in households with income less than 200% of the federal poverty level.

Wyoming rates have decreased from 10.10% uninsured children below 200% of the FPL in 1994-1996 to 7.30% in 2001-2003 per this report.

Information compiled by: Wyoming State Planning Grant Project - lograd@state.wy.us

Wyoming Historical Health Insurance Table
Percent of People Not Covered
All Income Levels

	All People	18-64	Under 18
\ 1994 \	15.30%	18.48%	13.50%
\ 1995 \	15.90%	18.75%	14.90%
\ 1996 \	13.40%	17.23%	10.50%
\ 1997 \	15.60%	19.05%	13.50%
\ 1998 \	16.90%	19.54%	16.40%
\ 1999 \	16.10%	19.40%	14.50%
\ 2000 \	15.70%	19.80%	13.10%
\ 2001 \	15.90%	20.59%	11.70%
\ 2002 \	17.70%	22.33%	14.20%
\ 2003 \	15.90%	20.26%	12.50%

Source Information: U.S. Census Bureau (CPS)
Historical Health Insurance Tables HI-4, HI-5 & HI-6

Table 9.
Percentage of People Without Health Insurance Coverage by State Using 2- and 3-Year Averages: 2001 to 2003

(People as of March of the following year)

States	3-year average 2001-2003		2-year average				Change in percentage points (2002-2003 average less 2001-2002 average) ¹	
			2001-2002		2002-2003			
	Percentage	90-percent confidence interval ² (±)	Percentage	90-percent confidence interval ² (±)	Percentage	90-percent confidence interval ² (±)	Percentage	90-percent confidence interval ² (±)
United States	15.1	0.1	14.9	0.1	15.4	0.1	*0.5	0.1
Alabama	13.3	0.9	12.9	1.0	13.5	1.0	0.6	0.9
Alaska	17.8	1.0	17.3	1.1	18.8	1.2	*1.6	1.0
Arizona	17.3	1.0	17.4	1.2	16.9	1.2	-0.4	1.1
Arkansas	16.6	1.0	16.2	1.2	16.9	1.2	0.7	1.1
California	18.7	0.5	18.8	0.6	18.3	0.6	*-0.6	0.5
Colorado	16.3	0.8	15.8	1.0	16.7	1.0	0.8	0.9
Connecticut	10.4	0.7	10.4	0.8	10.5	0.8	0.1	0.7
Delaware	10.1	0.8	9.6	0.9	10.5	1.0	*0.9	0.8
District of Columbia	13.3	1.0	12.8	1.1	13.6	1.2	0.8	1.0
Florida	17.6	0.6	17.4	0.7	17.7	0.7	0.3	0.6
Georgia	16.4	0.9	16.3	1.1	16.3	1.1	-0.1	1.0
Hawaii	9.9	0.8	9.8	0.9	10.1	0.9	0.2	0.8
Idaho	17.5	1.0	16.9	1.2	18.3	1.3	*1.3	1.1
Illinois	14.0	0.6	13.9	0.7	14.3	0.7	0.4	0.6
Indiana	12.9	0.7	12.4	0.9	13.5	0.9	*1.0	0.8
Iowa	9.5	0.7	8.5	0.8	10.4	0.9	*1.9	0.7
Kansas	10.9	0.8	10.9	0.9	10.7	0.9	-0.2	0.8
Kentucky	13.3	0.9	12.9	1.0	13.8	1.0	0.8	0.9
Louisiana	19.4	1.1	18.8	1.3	19.5	1.3	0.7	1.1
Maine	10.7	0.7	10.8	0.8	10.9	0.8	-	0.7
Maryland	13.2	0.8	12.8	0.9	13.6	0.9	0.8	0.8
Massachusetts	9.6	0.6	9.1	0.7	10.3	0.8	*1.2	0.7
Michigan	11.0	0.6	11.0	0.7	11.3	0.7	0.2	0.6
Minnesota	8.2	0.6	7.9	0.7	8.3	0.8	0.4	0.7
Mississippi	17.0	1.1	16.5	1.3	17.3	1.3	0.8	1.1
Missouri	10.9	0.7	10.9	0.9	11.3	0.9	0.4	0.8
Montana	16.1	1.1	14.5	1.2	17.3	1.3	*2.9	1.1
Nebraska	10.3	0.8	9.9	0.9	10.8	0.9	*0.9	0.8
Nevada	18.3	0.9	17.9	1.1	19.3	1.1	*1.4	0.9
New Hampshire	9.9	0.7	9.7	0.8	10.1	0.8	0.5	0.7
New Jersey	13.7	0.6	13.5	0.8	14.0	0.8	0.5	0.7
New Mexico	21.3	1.3	20.9	1.5	21.6	1.5	0.7	1.3
New York	15.5	0.5	15.6	0.6	15.4	0.6	-0.2	0.5
North Carolina	16.1	0.8	15.6	0.9	17.0	0.9	*1.4	0.8
North Dakota	10.5	0.8	10.3	0.9	10.9	0.9	0.6	0.8
Ohio	11.7	0.6	11.5	0.7	12.0	0.7	0.5	0.6
Oklahoma	18.7	1.0	17.8	1.2	18.8	1.2	1.0	1.1
Oregon	14.8	0.9	13.7	1.0	15.9	1.1	*2.2	0.9
Pennsylvania	10.7	0.5	10.3	0.6	11.4	0.6	*1.1	0.5
Rhode Island	9.3	0.6	8.8	0.8	10.1	0.8	*1.3	0.7
South Carolina	13.1	0.9	12.4	1.0	13.4	1.0	*1.0	0.9
South Dakota	11.0	0.8	10.4	0.9	11.8	0.9	*1.4	0.8
Tennessee	11.8	0.9	11.0	1.0	12.0	1.0	*1.0	0.9
Texas	24.6	0.7	24.7	0.8	25.2	0.8	0.5	0.7
Utah	13.6	0.9	14.1	1.1	13.0	1.0	*-1.1	0.9
Vermont	9.9	0.7	10.1	0.9	10.1	0.9	-	0.7
Virginia	12.5	0.8	12.2	1.0	13.3	1.0	*1.1	0.8
Washington	14.3	0.9	13.7	1.0	14.8	1.1	*1.2	0.9
West Virginia	14.8	0.9	13.9	1.0	15.6	1.1	*1.7	0.9
Wisconsin	9.5	0.7	8.7	0.8	10.4	0.8	*1.6	0.7
Wyoming	16.5	1.0	16.8	1.2	16.8	1.2	-	1.0

-Represents zero or rounds to zero.

*Statistically different from zero at the 90-percent confidence level.

¹Details may not sum to totals because of rounding.

²A 90-percent confidence interval is a measure of an estimate's variability. The larger the confidence interval in relation to the size of the estimate, the less reliable the estimate. For more information see "Standard errors and their use" at <www.census.gov/hhes/www/p60-226sa.pdf>.

Source: U.S. Census Bureau, Current Population Survey, 2002 to 2004 Annual Social and Economic Supplements.

CPS Data: 3-year average for 2001 to
2003 Data
Persons in Poverty Universe
(Numbers in Thousands)

NOTE: The Current Population Survey Annual Social and Economic Supplement is an annual survey of approximately 78,000 households nationwide.
Therefore, use extreme caution when making inferences when the cell sizes are small.

State: WY		Totals	Income-to-Poverty Ratio			
			Below 100%	100% to 149%	150% to 199%	200% and above
Totals	Totals	428	40	35	47	306
	Age					
	00 to 10	72	9	9	11	42
	11 to 18	55	5	6	6	39
	19 to 64	301	25	21	30	225
Health Insurance Coverage						
Insured	Totals	348	24	25	34	266
	Age					
	00 to 10	63	7	7	10	38
	11 to 18	48	4	4	5	35
	19 to 64	238	13	13	19	192
Uninsured	Totals	80	16	11	13	40
	Age					
	00 to 10	9	2	2	1	4
	11 to 18	8	2	1	1	4
	19 to 64	64	12	8	10	33

Source: U.S. Census Bureau
Current Population Survey,
Annual Social and Economic
Supplement, 2002 through
2004

Health Insurance Coverage

	STATE	NATIONAL
Percent of population with health insurance coverage	83.6%	85.3%
Percent of private-sector establishments offering health insurance to employees	44.0%	58.3%
Percent of eligible private-sector employees enrolled in health insurance at establishments offering health insurance	86.0%	79.8%
Medicaid enrollment as a percent of population under 200% FPG	34.1%	45.2%
State expansion of coverage beyond federal minimums (min, low, mod, high)	Minimal	n/a

Income

	STATE	NATIONAL
Percent of population at or above 100% FPG	91.0%	87.9%
Percent of population at or above 200% FPG	69.7%	69.5%

System-Wide Health Care Resources

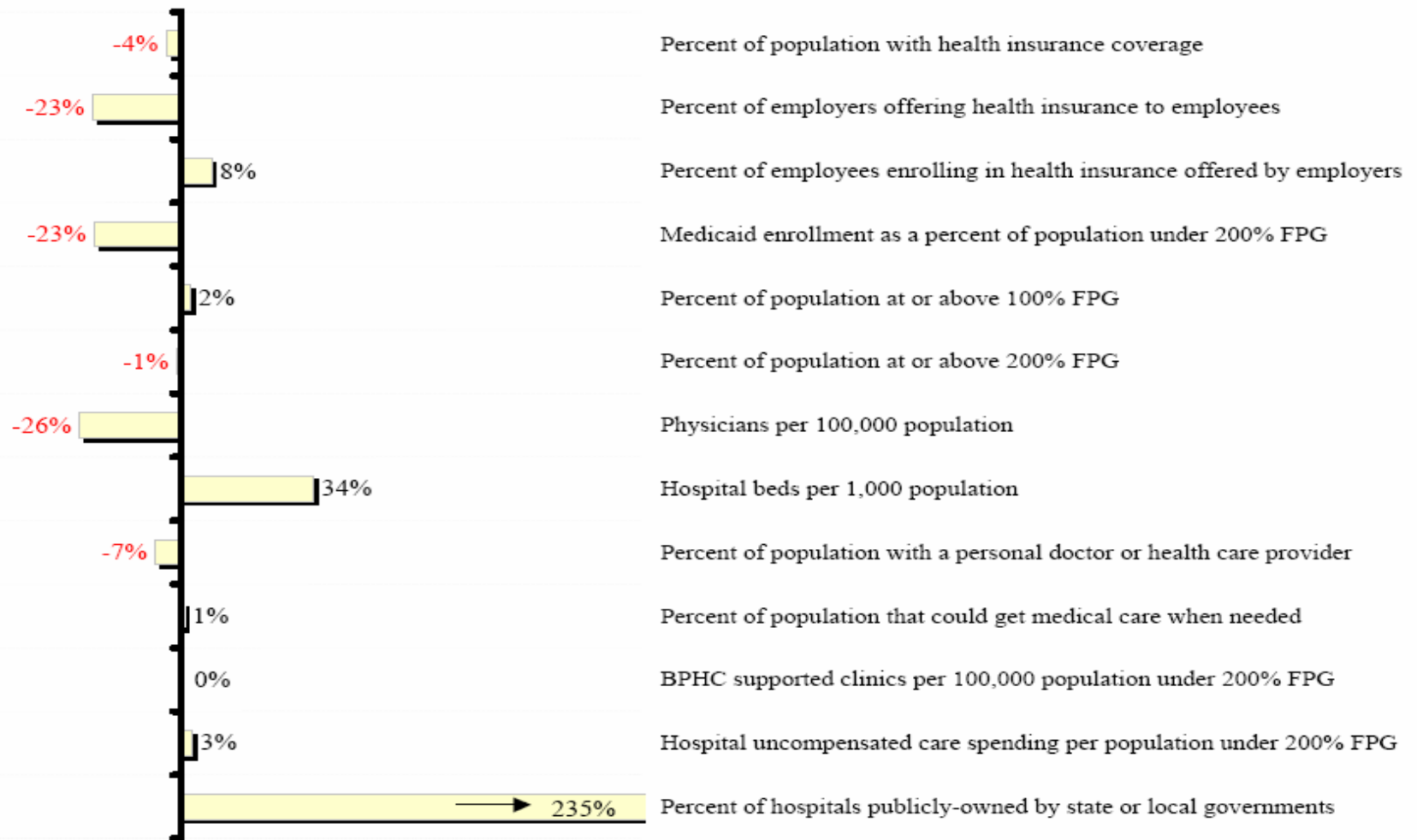
	STATE	NATIONAL
Physicians per 100,000 population	186	272
Hospital beds per 1,000 population	3.9	2.9
Percent of population with a personal doctor or health care provider	75.9%	79.4%
Percent of population that could get medical care when needed	94.8%	93.5%

Safety Net Resources

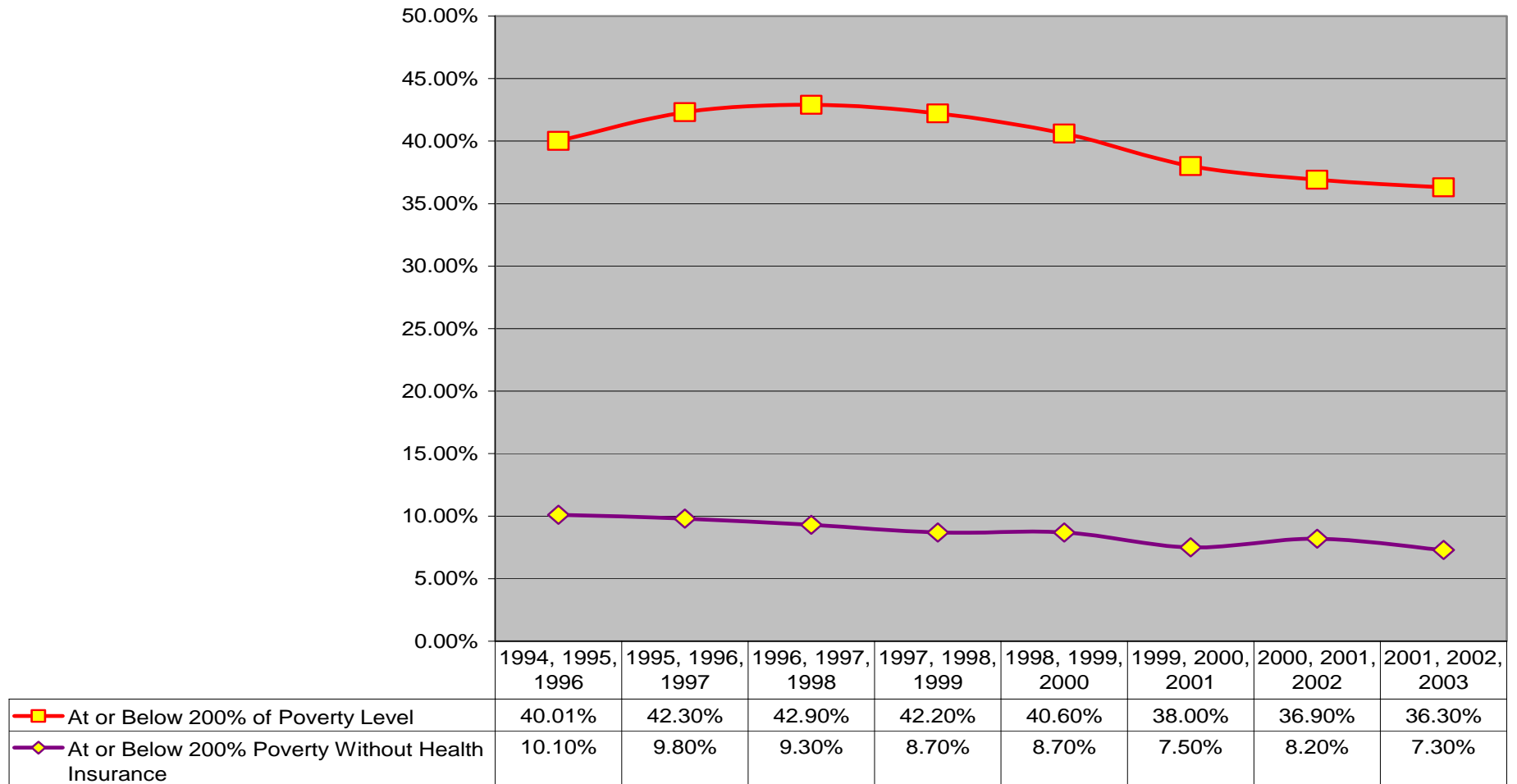
	STATE	NATIONAL
BPHC supported clinics per 100,000 population under 200% FPG	5.3	5.2
Hospital uncompensated care spending per population under 200% FPG	\$226	\$245
Percent of hospitals publicly-owned by state or local governments	67.0%	24.0%

State Health Access Profile: **WYOMING**

% Difference from US State Median

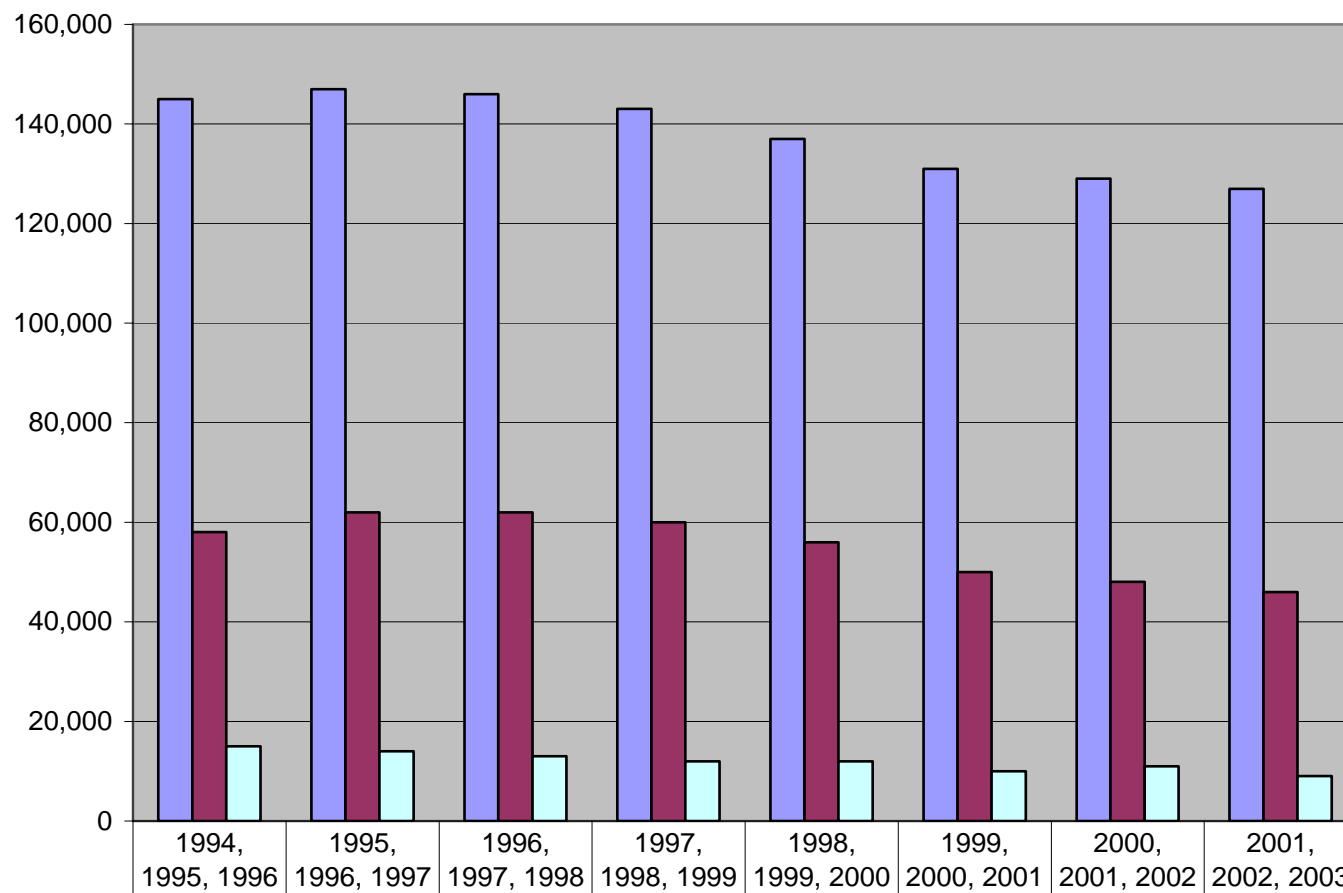


Wyoming Low Income Uninsured Children Under 19 Years of Age - Three Year Averages



Source: U.S. Census Bureau Health Insurance Data Low Income Uninsured Children

Wyoming Low Income Uninsured Children Under 19 Years of Age - Three Year Averages



Under 19 Total	145,000	147,000	146,000	143,000	137,000	131,000	129,000	127,000
At or Below 200% of Poverty Number	58,000	62,000	62,000	60,000	56,000	50,000	48,000	46,000
At or Below 200% of Poverty Without Health Insurance Number	15,000	14,000	13,000	12,000	12,000	10,000	11,000	9,000

Source: U.S. Census Bureau Health Insurance Data Low Income Uninsured Children