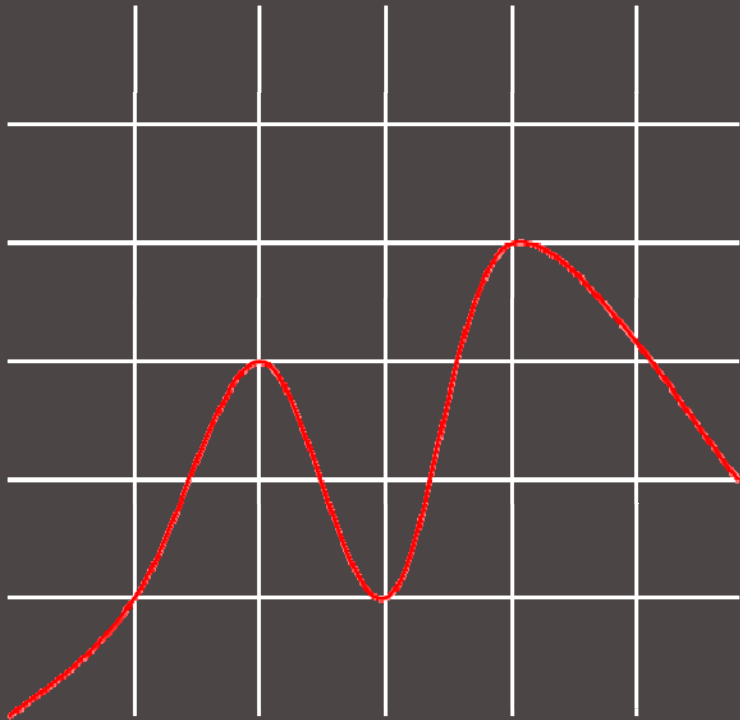


Wyoming Economic and Demographic Data

Tools for your Toolbox



Presented to:

Wyoming Association of Municipal
Clerks and Treasurers (WAMCAT)
2011 Region VIII & WAMCAT Winter
Workshop
Jackson, Wyoming
January 27, 2011

Amy Bittner

Department of Administration &
Information

Economic Analysis Division (EAD)

Economic Analysis Division (EAD)

- Mission: Coordinate, develop, and disseminate economic and demographic research and information.
- Office – 6 staff including 5 economists (also sometimes a summer student intern).
- Each economist has a specialty, staff work on projects individually and as a team.
- My background: University of Wyoming.
 - B.S. International Agricultural Economics.
 - M.S. Agricultural Economics.
 - With EAD for over 7 years.



department of administration & information
economic analysis division

[Division Home](#)

[About Us](#)

[Contact Us](#)

[Cost of Living](#)

[Demographic Info](#)

[Economic Data](#)

[Publications](#)

[Special Reports](#)

[State Revenue](#)

[Take Our Survey!](#)

What's New!!

[Wyoming Sales, Use, and Lodging Tax Revenue Report: FY 2009](#)

[October 2009 CREG Forecast for FY2010-FY2014 \(PDF\)](#)

[Wyoming Economic Summary: 2nd Quarter of 2009](#)

[U.S. Census 2010 - Wyoming Counts](#)

[The Wyoming Cost of Living Index for the Second Quarter of 2009 \(pdf\)](#)

[2008 American Community Survey Profiles](#)

[Wyoming Insight \(pdf\)](#)

[CREG Monthly Report • \(Press Release\)](#)

Links to Other Sources of Business and Economic Data

- [Wyoming Labor Market Information](#)
- [Wyoming Business Council](#)
- [Wyoming Business Alliance](#)
- [Wyoming Business Report](#)
- [Guide to Regional Economic Data](#)
- [US Census Bureau Home Page](#)
- [US Bureau of Economic Analysis](#)
- [US Bureau of Labor Statistics](#)
- [Federal Reserve Bank of Kansas City](#)
- [North America's Power & Gas Infor Source](#)

[State Home](#)

[Department Home](#)

[Search](#)

[Questions or Comments](#)

[Copyright](#)

EAD Publications and Other Data

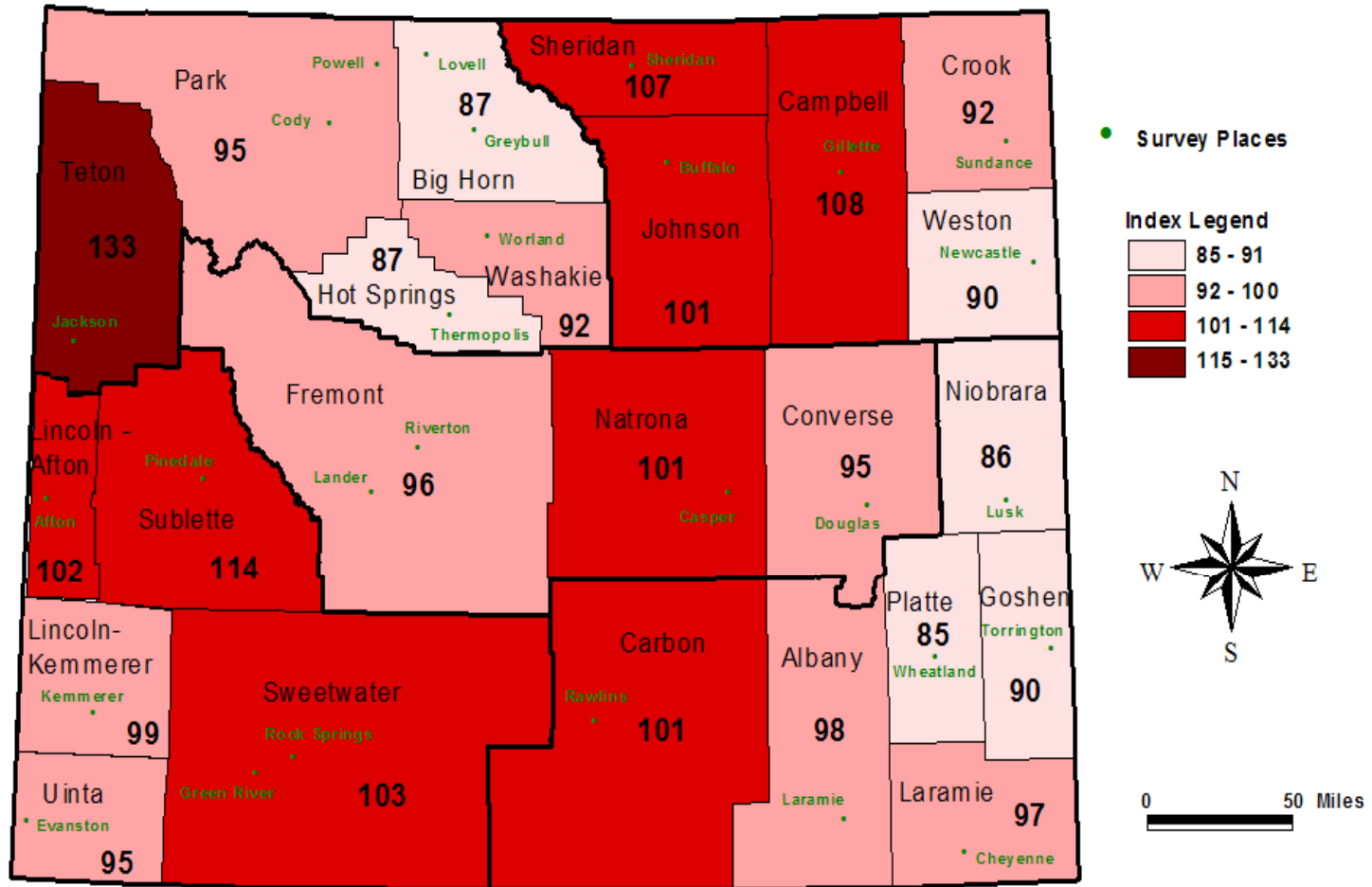
- Consensus Revenue Estimating Group (CREG).
- Sales, Use, and Lodging Tax Collections report.
- Year-to-date sales and use tax collections.
- Wyoming Insight.
- Just the Facts!
- Wyoming Income, Employment, and Gross Domestic Product by State report.
- Decennial Census data.
- Population estimates.
- Equality State Almanac.
- Economic and demographic forecast (Outlook).
- Wyoming Economic Summary (quarterly).
- PowerPoint Presentations.
- Customized tabulations.
- Charts and maps.
- Economic modeling.

Wyoming Cost of Living Index (WCLI)

- Published biannually, 2nd and 4th quarter.
 - 28 communities surveyed.
- Measures annual price changes in Wyoming and counties.
- Comparative index: compare each county's price level to the statewide average.
- Inflation rates: State and 5 regions by category.
- Categories: housing, apparel, transportation, food, recreation & personal care, and medical.
- Data uses:
 - Adjust salaries.
 - Recognize components driving a consumer's budget.
 - Identify changes to a region's economy.

Wyoming Comparative Cost of Living Index - 2Q10

(with surveyed communities in each county)



Note: Starting with the 2Q03 WCLI report, Northern Lincoln County (Afton) is included in the comparative index and is tabulated separately from South Lincoln County (Kemmerer).

Source: Wyoming Economic Analysis Division

Consensus Revenue Estimating Group (CREG)

- Official revenue estimating body for all Wyoming State Government revenues. Created in 1983.
- Counsels Governor and Legislature on revenue availability for budgeting process.
- Membership includes representatives from executive and legislative branches of state government and UW.
- Meets biannually – October and January.
- Creates a forecast for mineral income, investment income, sales and use tax, and other General Fund sources.
- Annual & monthly CREG reports.

State Data Center Program (SDC)

- Partnership between states and U.S. Census Bureau (in all states and territories).
- Model of Federal and State cooperation.
- Goal: To provide an effective medium for the dissemination of information and data produced by the Census Bureau to state and local governments.
- Official source of demographic, economic, and social statistics produced by the U.S. Census Bureau and other state and Federal agencies.
- SDCs make information available to state, regional, local and tribal governments and public data users at no cost (usually).
- Provide training and consultation to data users.
- 9 member Steering Committee guides SDC network.
- Feedback to the U.S. Census Bureau:
 - Example: data usability, state and local government needs, survey programs.

Commonly Used Census Materials

- Decennial Census data.
- Annual population estimates.
- American Community Survey (ACS).
- County Business Patterns.
- Economic Census.
- Residential building permits.
- Local Employment Dynamics (LED).
- Small Area Income and Poverty Estimates (SAIPE).
- Small Area Health Insurance Estimates (SAHIE).
- Most data accessible through American FactFinder.
- Data location:
 - EAD, <http://eadiv.state.wy.us>
 - U.S. Census Bureau, <http://www.census.gov>

2010 Census Data

- State data are available now, Wyoming's population is 563,626, increased 14.1% from 2000.
- County, municipal, down to block level will be available in February or March 2011. Released state-by-state on a flow basis.
- Statistics from the 2010 Census:
 - Race, ethnicity, group quarters population, gender, age, population density, urban/rural population, housing units (vacant, occupied), families, households.
 - Population counts to the block level (smallest geography).
- Release schedule of 2010 products, <http://www.census.gov/population/www/cen2010/glance/index.html>
- Detailed social, demographic, economic, and social statistics come from the American Community Survey (ACS).

Decennial Census vs. Population Estimates

- The decennial census is the official population count that occurs every ten years.
- Population estimates are produced annually between decennial censuses. Both the decennial and estimates measure resident population.
- Decennial population is utilized as the base for the annual population estimates.
- Population estimates:
 - State, counties, cities, and towns.
 - State and county by age and sex.
 - State and county by race and Hispanic origin.
 - Methodology is comprised of various data sources: births, deaths, and migration using IRS tax returns.
 - Annual releases include revised estimates for previous years.
 - Incorporates annexation and building permits data.

<http://eativ.state.wy.us/pop/pop.html>

American Community Survey (ACS)

- Census Bureau's response to the comments that decennial census data are not current.
- New way to collect detailed information about the population throughout the decade instead of every 10 years.
- ACS is a sample survey that replaces the decennial long-form questionnaire.
- Information is collected throughout the year, everyday.
- Random sample – sample 3 million addresses, 2 million final. 1 in 40 addresses each year.
- ACS can provide an up-to-date statistical picture of community, such as social, demographic, economic, and housing characteristics.
- ACS Compass products for different types of data users, online tutorial.

<http://www.census.gov/acs/www/>

Data Collected from ACS

Social characteristics:

- Education
- Marital Status
- Fertility
- Grandparent/Caregivers
- Veterans
- Disability Status
- Place of Birth
- Citizenship
- Year of Entry
- Language Spoken at Home
- Ancestry /Tribal Affiliation

Demographic characteristics

- Sex
- Age
- Race
- Hispanic Origin

Economic characteristics:

- Income
- Benefits
- Employment Status
- Occupation
- Industry
- Commuting to Work
- Place of work

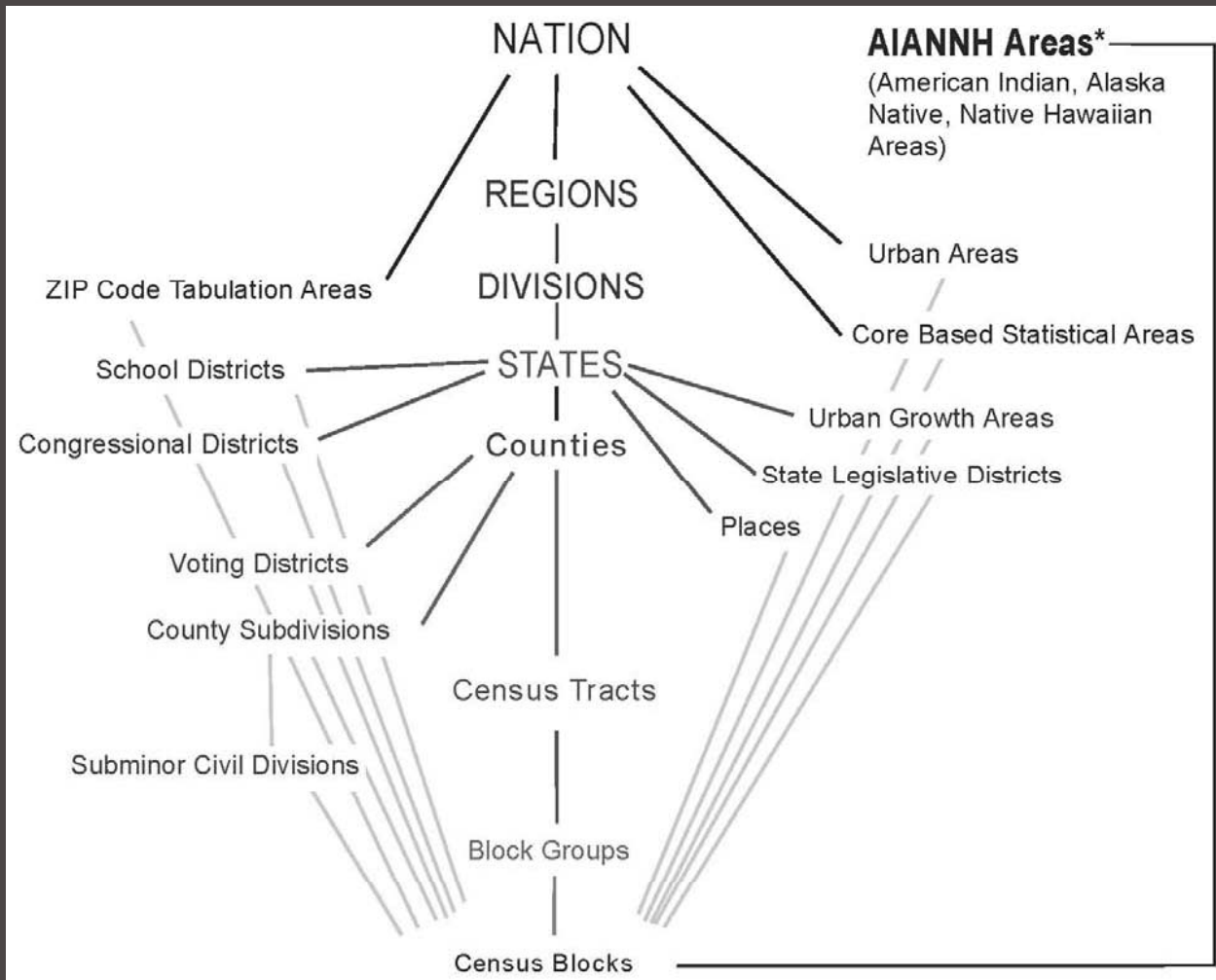
Housing characteristics:

- Tenure
- Occupancy & Structure
- Housing Value
- Taxes & Insurance
- Utilities
- Mortgage/Monthly Rent

Level of ACS data

- Annual data for populations of 65,000 or more.
 - Wyoming and Laramie and Natrona counties, 2009 most current.
 - Access general demographic, social, economic, and housing profiles on EAD website.
 - Profiles and tables available through American FactFinder on the U.S. Census Bureau's website.
 - Ranking tables for selected characteristics by State.
- Geographies with populations of 20,000 or more, 3-year average ACS (2007-2009).
- Areas smaller than 20,000, down to block group, 5-year average data (2005-2009).
- ACS data are released every year.
- Margins of Error (MOEs) are produced for estimates.

Census Geography

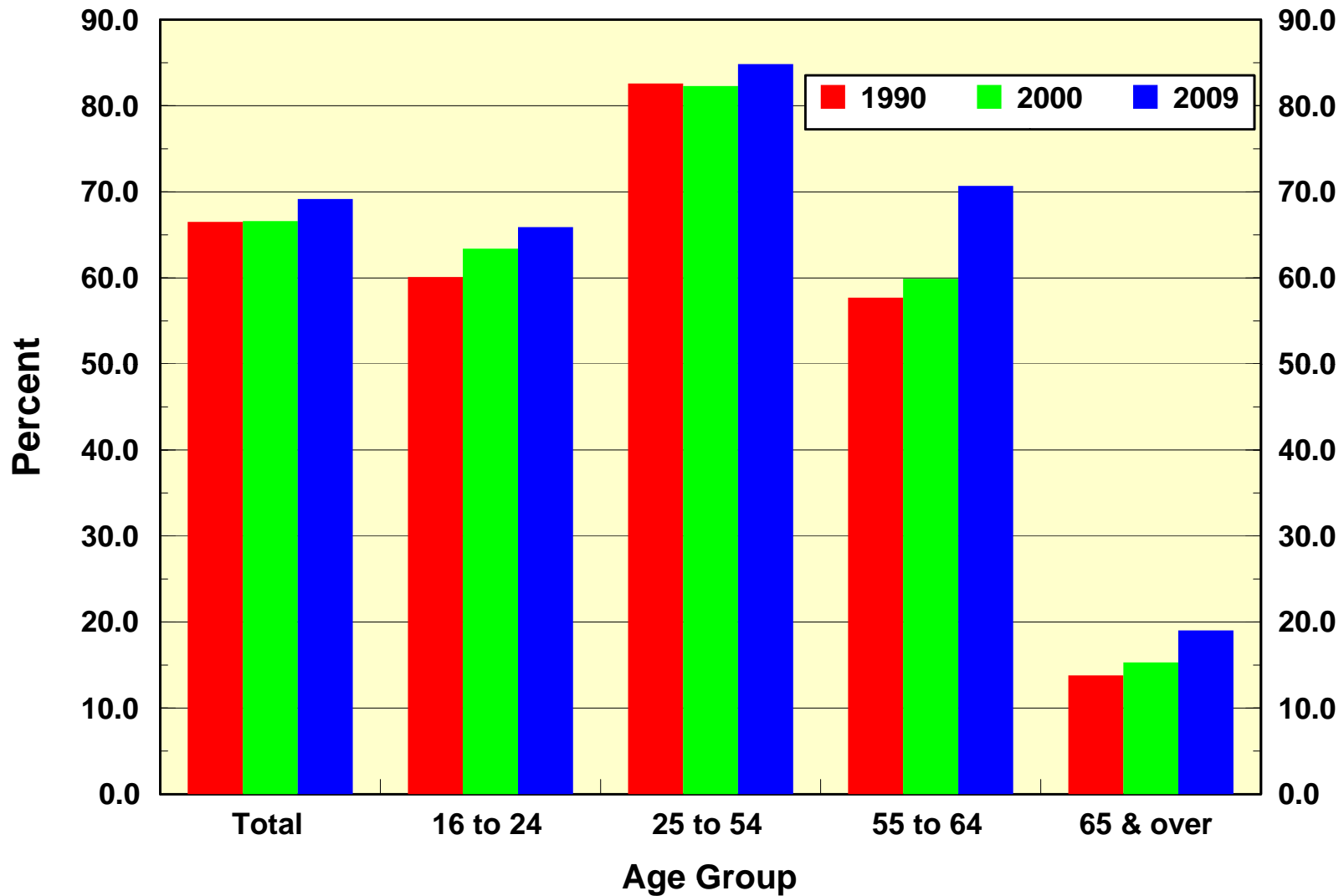


* Refer to the "Hierarchy of American Indian, Alaska Native, and Native Hawaiian Areas"

2009 ACS Statistics for Wyoming

- Composition of families and households:
 - 5.0% of households are headed by single female with own children under 18 years.
- Grandparents that live with their grandchildren:
 - 46.6% are responsible for grandchildren.
- Educational attainment: 91.8% of adults completed high-school. (top in U.S.) . **BUT**, only 23.8 % have completed a bachelor's degree (41st).
 - Median earnings by educational attainment, by sex.
- Travel-to-work: 18.0 minutes is mean travel time to work.
- Median Household Income: \$52,664, ranks 20th in the nation.
- Health insurance coverage: 15.2% uninsured.
- Children: 66.4% of children under 6 years have all parents in labor force
- Poverty:
 - People below poverty level, 9.8%, ranked 46th in the U.S.
 - Children below poverty level, 12.6%, also ranked 47th .
 - Single-mom families with related children under 5 yrs: 45.9%.

% of Wyoming Population 16 Years and Over in Civilian Labor Force

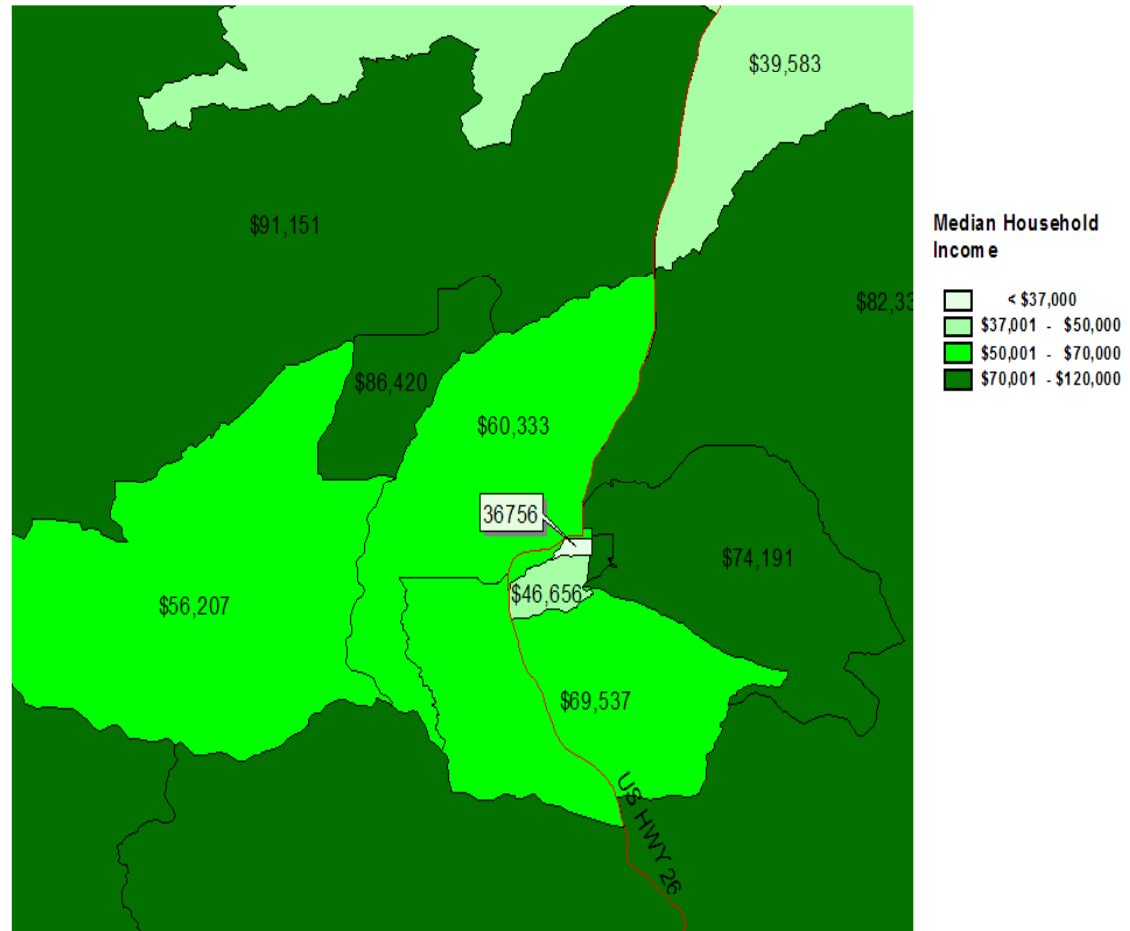


Source: ACS, U.S. Census Bureau

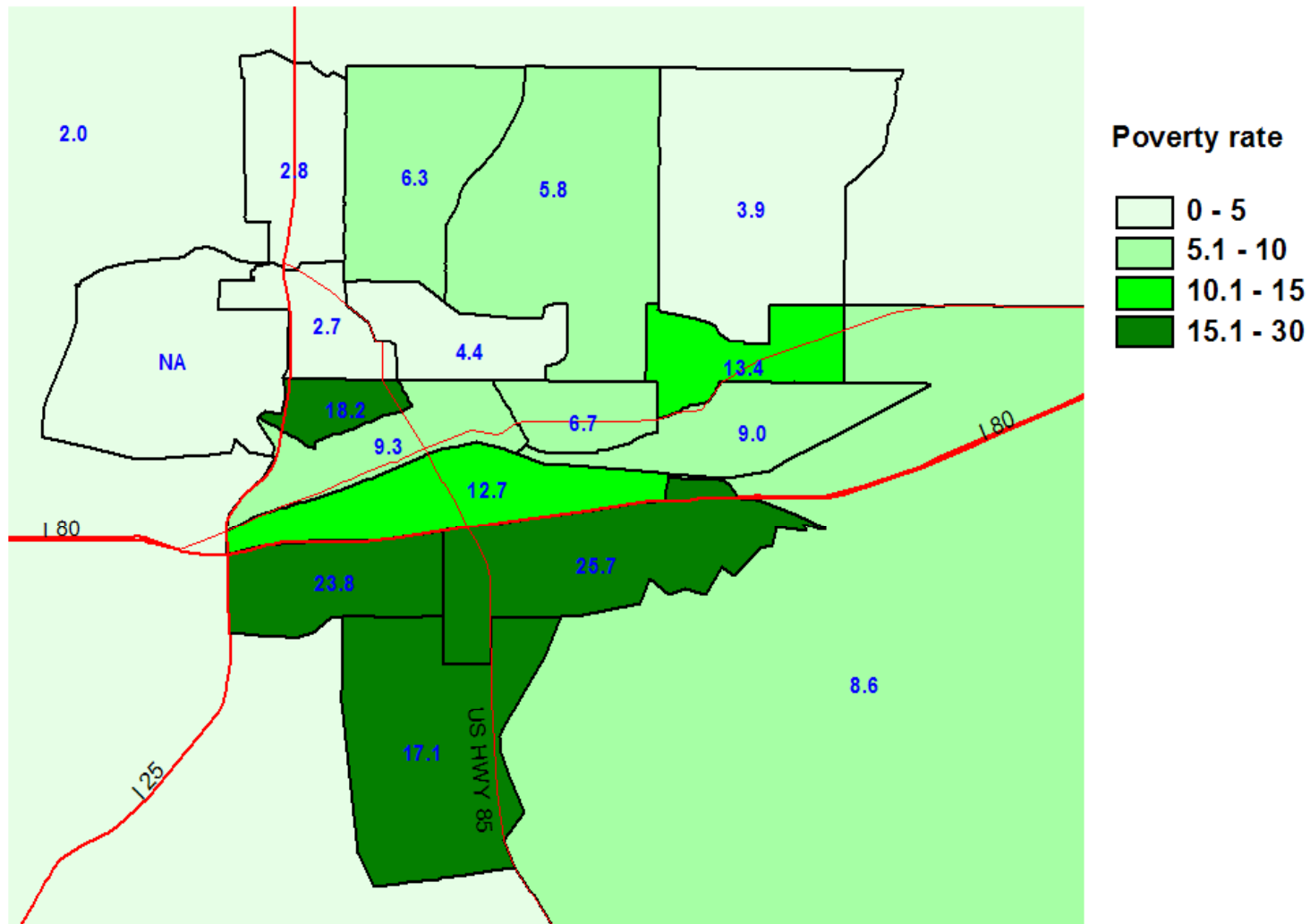
2005 - 2009 ACS Data

- 5-year data are produced for all geographies (down to block group).
- 1,000 tables for each geographic area
- When comparing across geographies, use the same time period. For example if you wanted to know the percent of children in poverty for all counties in Wyoming, use 5-year data (2005-2009).

Median Household Income by Block Group: Jackson Area
ACS 2005-2009



Percent of Population below Poverty by Census Tract: Cheyenne Area 2005-2009 ACS



ACS PUMS

- 1% Public Use Microdata Sample (PUMS).
- Perform customized tabulations.
- Cross-tabulate data to find information not presented in pre-manufactured tables.
- Wyoming: State and 4-5 PUMAs (Public Use Microdata Areas). Each area has a minimum population threshold of 100,000.
- Example: Determine the number of people age 65 and over that have a median household income below \$40,000 and own their home.
- EAD can help create these custom tabulations.

American FactFinder (AFF)

- Online tool for accessing various census data.
- Brand new version launched on January 18 for 2010 Census, <http://factfinder2.census.gov/main.html>
- Eventually will have multiple data sets: decennial census, ACS, Economic Census, County Business Patterns.
- What can it do?
 - Multiple ways to search data.
 - Custom table views.
 - Thematic mapping.
 - Transpose rows and columns.
 - Address search.
- Use legacy system to access current data sets. Old AFF will run through fall 2011, http://factfinder.census.gov/home/saff/main.html?_lang=en

http://factfinder2.census.gov/main.html - Windows Internet Explorer

http://factfinder2.census.gov/main.html

File Edit View Favorites Tools Help

http://factfinder2.census.gov/main.html

U.S. Census Bureau

AMERICAN FactFinder

Feedback FAQs Glossary Help

MAIN SEARCH WHAT WE PROVIDE USING FACTFINDER English Español

Your Selections
 "Your Selections" is empty

Topics ?

Geographies
 (states, counties, places,...)

Population Groups
 (race, ancestry,...)

Industry Codes
 (NAICS,...)

Legacy American FactFinder
 The following data are available on the legacy American FactFinder System:

- 2007 Economic Census
- 2009 American Community Survey

Your source for population, housing, economic, and geographic data

Quick Start
 Enter search term(s) and click 'GO' ?

topic or table name for geography (optional)

for **GO**

topics population groups industries

Or use the options on the left to begin your search

U.S. Population Clock
 22:43 UTC (EST+5) Jan 18, 2011
311,914,560
[more population clocks](#)

Reference Maps
 Reference Maps show selected geographic boundaries for an area along with orienting features, such as roads.

United States **GO**

Address Search
 Find Census data by

Internet 100% 3:45 PM

Economic Census

- Conducted every 5 years by surveying businesses.
- 2007 Economic Census is most current.
- Provides detailed industry data:
 - Employees, establishments, sales, revenue, expenses, and annual payroll.
 - 2007 Retail Trade sales in Niobrara County, \$19.6 million, Goshen County, \$116 million.
- Industry and Geography quick reports, thematic maps.
- Tax exemption status, indicator of non-profits.
- Able to compare WY to nation, or compare other cities and towns – What types of businesses should be targeted?
- Survey of Business Owners – minority and women owned businesses.
- Data available on AFF.

<http://www.census.gov/econ/census07/>

County Business Patterns

- Published annually on a 2-year lag, most current data available are for 2008.
- Economic Census is the foundation for publication.
- State and county industry data for the number of establishments, employees, payrolls, and establishments by employee size.
- Able to compare counties.
- Example: In 2008, there were 9 offices of physicians in Carbon County with a total of 66 employees. A majority of these establishments (7) were comprised of 5-9 employees.

<http://www.census.gov/econ/cbp/>

Local Employment Dynamics (LED)

- Federal-state partnership to provide data on America's jobs, workers, and local economies and communities (48 states).
- Quarterly Workforce Indicators (QWI) – trends in employment, hiring, job creation, turnover, demographics of workers.
- OnTheMap – workforce related map. Able to show home and employment locations of workers (handout).
- Industry Focus – identifies “hot” industries by selected characteristics of different worker groups in the State.
- Community Economic Development HotReports – For Wyoming, county profile includes demographics, economics, transportation, housing, and community assets.

<http://lehd.did.census.gov/led/datatools/datatools.html>

Print

QWI Online [NAICS]

LEHD State of Wyoming County Reports - Quarterly Workforce Indicators

Select Criteria below. A new report will be created below as selections change.

Year Geographic Grouping or [Information by Detailed Industry](#)
 Quarter County
 Sex Industry
 AgeGroup Ownership

Download Dataset Print Table

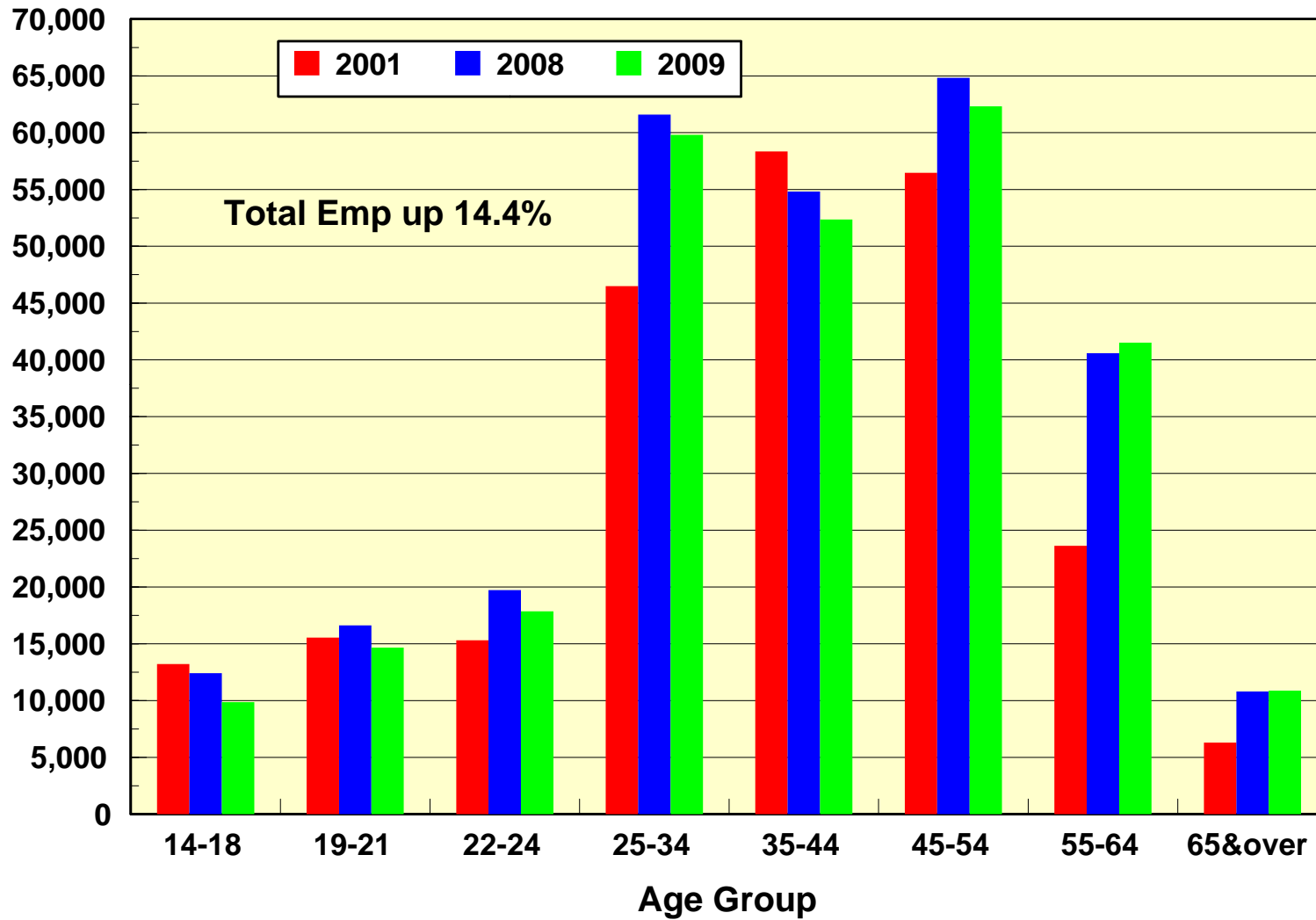
QWI Quick Facts	Albany (Q4)	Albany (Avg: Selected + 3 Prior qtrs)	Wyoming (Q4)	Wyoming (Avg: Selected + 3 Prior qtrs)
Total Employment	2,621	2,611	52,049	52,359
Net Job Flows	-49	-1	-1,550	-428
Job Creation	123	147	3,489	3,832
New Hires	242	288	6,489	7,309
Separations	350	343	9,951	9,411
Turnover	6.5%	6.7%	9.4%	9.1%
Avg Monthly Earnings	\$4,207.00	\$3,994.25	\$4,134.00	\$3,906.25
Avg New Hire Earnings	\$2,614.00	\$2,357.25	\$2,982.00	\$2,780.75

[View Detailed Comparison Reports](#)

[For more information](#)

Age Group = 35-44; County = 001 Albany, Geographic Grouping = county, Industry = All NAICS Sectors; Owner = All(1-5); Quarter = Q4; Sex = Male and Female; State = Wyoming; Year = 2009;

Number of Workers by Age for Wyoming



Source: QWI, U.S. Census Bureau

LED - OntheMap

- Create maps and tables for workforce related statistics.
 - Where do workers live? Where do people work? (different levels of geography).
 - Characteristics of workforce (age, earnings, demographics, type of job).
- Program updated annually.
- 2002-2009 data available.
- Handout.

Example: Where do workers in Teton County, WY live?

Home Destination Report - Where Workers Live Who are Employed in the Selection Area - by Counties				
Total All Jobs	2008		2007	
	Count	Share	Count	Share
Total All Jobs	16,666	100.0%	15,756	100.0%
Jobs Counts by Counties Where Workers Live				
	2008		2007	
	Count	Share	Count	Share
Teton County, WY	8,403	50.4%	8,496	53.9%
Teton County, ID	2,119	12.7%	1,741	11.0%
Lincoln County, WY	756	4.5%	596	3.8%
Bonneville County, ID	527	3.2%	573	3.6%
Sweetwater County, WY	489	2.9%	586	3.7%
Park County, WY	429	2.6%	273	1.7%
Natrona County, WY	423	2.5%	419	2.7%
Fremont County, WY	265	1.6%	271	1.7%
Fremont County, ID	207	1.2%	150	1.0%
Sublette County, WY	156	0.9%	51	0.3%
All Other Locations	2,744	16.5%	2,600	16.5%

Other Frequently Used Economic Data

- U.S. Bureau of Labor Statistics (BLS).
 - Non-farm employment, unemployment rates, average weekly wage, and annual pay.
- Wyoming Dept. of Employment, Research and Planning.
- U.S. Bureau of Economic Analysis (BEA).
 - Employment (proprietors, household workers, and farm).
 - Gross Domestic Product (National and State).
 - Personal income (total & per capita), earnings (pay or wages from working).
- Wyoming Department of Revenue.
 - Sales and use tax collections.
 - Assessed valuation.

Have data questions?

- Contact the Economic Analysis Division
 - E-mail: ead@wyo.gov
 - Phone: 307-777-7504
 - Fax: 307-632-1819
- <http://eadiv.state.wy.us>
- E-mail notifications
 - New publications available
 - Releases of Census Data
- Customized tabulations

