

FOR IMMEDIATE RELEASE

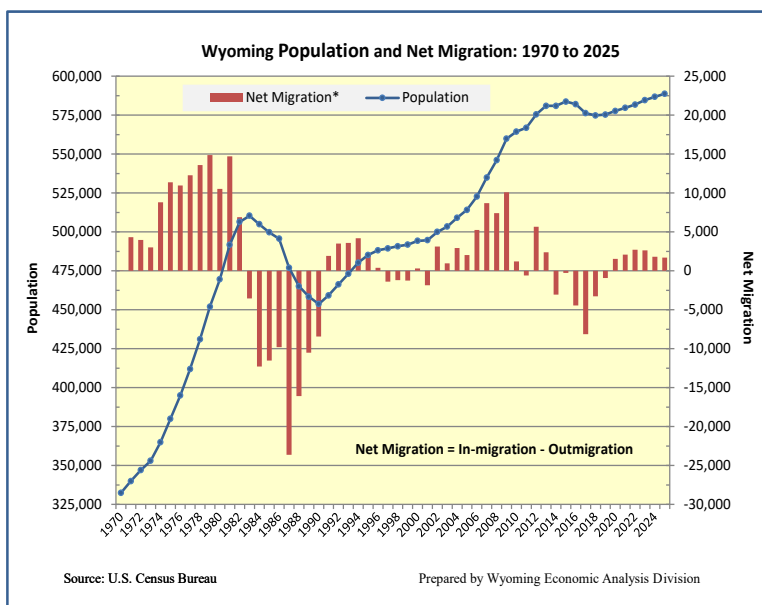
Tuesday, January 27, 2026

Contact: Dr. Wenlin Liu, Administrator

THE POPULATION IN WYOMING CONTINUES TO EXPAND IN 2025 AT A MEASURED PACE

CHEYENNE -- Wyoming's total resident population grew to 588,753 in July 2025, according to estimates just released by the U.S. Census Bureau. The annual increase from July 2024 was 2,031 people, representing a growth rate of 0.3 percent. This increase was slightly lower than the 0.4 percent annual growth recorded in 2024. There are two factors that contribute to population change: natural change from vital events and net migration from people's movement. The natural change, calculated as 6,070 births minus 5,775 deaths, was 295. The estimated net migration, defined as in-migration minus out-migration, was 1,732, indicating that 1,732 more persons moved into Wyoming than moved out of the state between July 2024 and July 2025. In contrast, for the previous two years, net migration was 2,592 in 2023 and 1,781 in 2024, respectively.

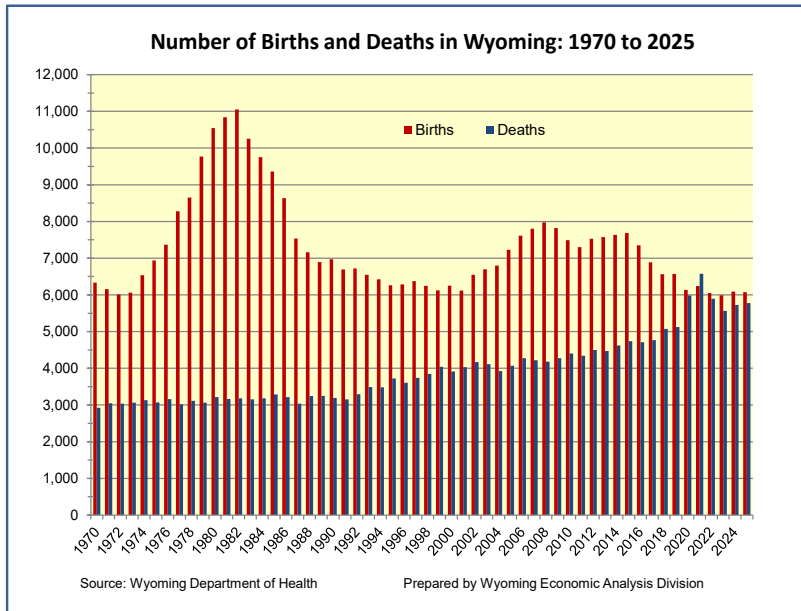
Nationally, the estimated population was 341.8 million in 2025, reflecting an increase of 0.5 percent from the previous year. This is the slowest annual growth since 2021, primarily due to a historic decline in net international migration, from 2.7 million in 2024 to 1.3 million in 2025. South Carolina led the nation with a growth rate of 1.5 percent, followed by Idaho (1.4%), North Carolina (1.3%), and Texas (1.2%). Forty-six states and the District of Columbia experienced population increase. However, five states lost population between 2024 and 2025, including California (-9,465), Hawaii (-2,132), New Mexico (-1,276), Vermont (-1,858), and West Virginia (-1,255). All neighboring states experienced a faster population increase than Wyoming, which had the 32nd fastest growth rate in the country in 2025. Since the 2020 Census, the state added 11,881 residents (or 2.1 percent), the 29th highest in population growth in the U.S.



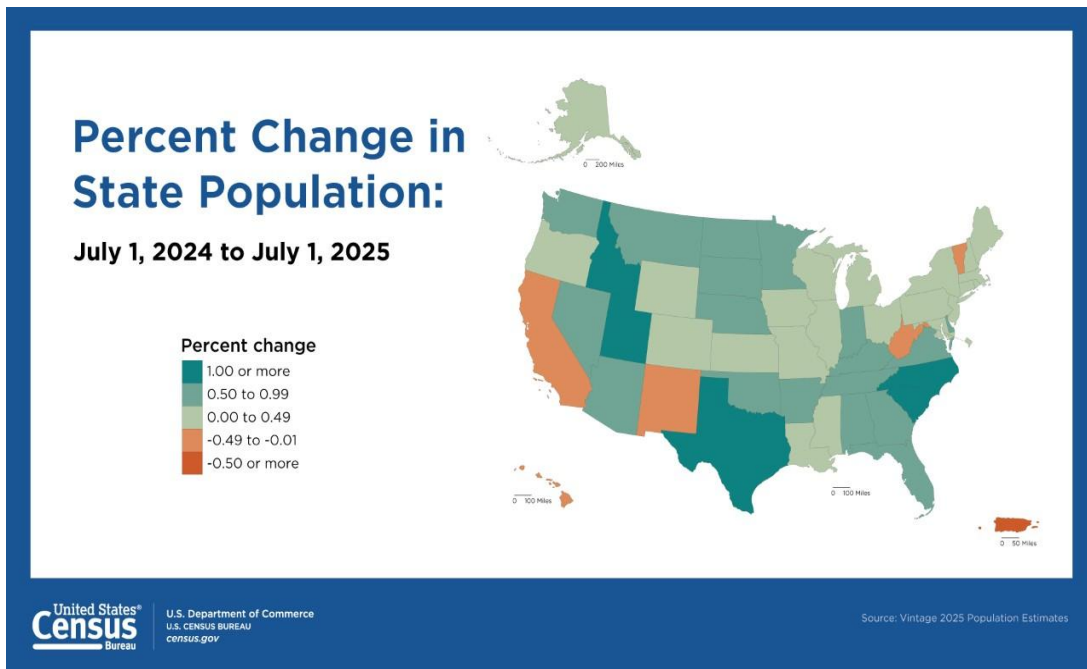
After an unprecedented occurrence, where the number of deaths outnumbered births, during the worst time of the COVID-19 pandemic in 2021, the natural change has since turned positive in Wyoming. “However, due to the continued decline in the fertility rate (the number of births per 1,000 females aged 15-44) and the aging of baby boomers (those born between 1946 and 1964), the contribution to the population from natural increase is much smaller compared to pre-pandemic periods,” according to Dr. Wenlin Liu, Administrator with the Economic Analysis Division. The natural change of less than 400 annually in recent years is only a fraction of 1,446 in 2019 and 3,015 a decade ago.

The state experienced nearly six consecutive years of negative net migration (more people left than moved into the state) between 2014 and 2019 due to the downturn in energy industry. However, the direction of net migration has

since reversed. “Employment opportunities driven by the energy sector have long been a key factor in Wyoming’s migration trends, but the pandemic significantly influenced this dynamic during the COVID period from 2020 to 2022,” said Dr. Liu. This pandemic-induced migration pattern (relocation from large cities with high costs to less populated, lower-cost areas) has already slowed down across the country in recent years. However, the state has continued to experience positive net migration, albeit at a decelerating rate. “Due to persistent inflation, particularly in home prices and rental costs, areas with a lower tax burden and lower overall cost of living may have become more attractive to many households.” Net migration comprises net domestic migration and net international migration. The estimated net domestic migration of 1,474 in 2025 nearly doubled the figure for 2024, while the estimated net international migration for the state was 258 in 2025, compared to 816 in 2023 and 1,010 in 2024. “Changes in immigration policy during the second Trump administration have undoubtedly contributed to the reduction of international migration,” Liu continued.



Similar to the U.S., Wyoming’s labor market somewhat slowed down in 2025. As of June 2025, Wyoming’s unemployment rate was 3.3 percent, similar to June 2024, but was much lower than the U.S. average of 4.1 percent. Despite a moderate decrease in the mining industry, the state’s total employment in June was slightly higher than the previous year, thanks to moderate growth in the construction, transportation & warehousing industries and a continued rebound in the job market for the government sector, which includes public higher education, K-12 education, and local hospitals.



The complete figures and methodology are available on the U.S. Census Bureau’s website, <http://www.census.gov/>

Table 1. Annual Estimates of the Resident Population for the United States, Regions, States, District of Columbia: April 1, 2020 to July 1, 2025

Geographic Area	April 1, 2020 Estimates Base	Population Estimate (as of July 1)					
		2020	2021	2022	2023	2024	2025
United States	331,516,113	331,578,104	332,100,166	333,996,304	336,755,052	340,003,797	341,784,857
Northeast	57,617,560	57,436,027	57,234,503	57,174,375	57,458,539	57,940,522	58,042,054
Midwest	68,999,462	68,979,566	68,867,096	68,872,112	69,132,050	69,518,281	69,762,666
South	126,281,605	126,473,371	127,380,165	129,066,102	130,894,372	132,662,072	133,833,983
West	78,617,486	78,689,140	78,618,402	78,883,715	79,270,091	79,882,922	80,146,154
Alabama	5,025,437	5,032,962	5,050,058	5,076,868	5,117,850	5,163,055	5,193,088
Alaska	733,383	732,906	734,590	733,659	734,654	736,537	737,270
Arizona	7,158,104	7,186,647	7,274,022	7,370,065	7,452,073	7,556,424	7,623,818
Arkansas	3,011,530	3,014,399	3,027,127	3,047,429	3,069,856	3,096,080	3,114,791
California	39,555,703	39,527,808	39,152,927	39,125,347	39,181,667	39,364,774	39,355,309
Colorado	5,775,326	5,786,873	5,814,368	5,853,355	5,912,240	5,988,502	6,012,561
Connecticut	3,607,750	3,579,643	3,607,765	3,618,707	3,641,369	3,674,449	3,688,496
Delaware	989,950	991,890	1,005,130	1,020,279	1,035,354	1,050,123	1,059,952
District of Columbia	689,544	670,958	669,637	674,501	682,559	691,310	693,645
Florida	21,538,207	21,591,325	21,836,698	22,413,989	22,929,248	23,265,838	23,462,518
Georgia	10,713,861	10,732,595	10,793,038	10,929,992	11,063,669	11,204,208	11,302,748
Hawaii	1,455,267	1,451,130	1,446,909	1,437,812	1,434,950	1,434,952	1,432,820
Idaho	1,839,123	1,849,328	1,904,855	1,942,951	1,970,497	2,000,872	2,029,733
Illinois	12,821,741	12,795,348	12,703,354	12,609,577	12,633,389	12,703,033	12,719,141
Indiana	6,786,605	6,790,290	6,814,223	6,841,491	6,881,373	6,934,754	6,973,333
Iowa	3,190,582	3,191,081	3,199,037	3,201,890	3,214,739	3,230,454	3,238,387
Kansas	2,937,986	2,938,274	2,938,966	2,938,034	2,949,749	2,965,252	2,977,220
Kentucky	4,506,287	4,508,271	4,508,348	4,521,238	4,549,953	4,584,046	4,606,864
Louisiana	4,657,894	4,652,145	4,628,595	4,600,892	4,598,777	4,614,878	4,618,189
Maine	1,363,218	1,364,546	1,379,009	1,391,585	1,401,992	1,408,438	1,414,874
Maryland	6,181,640	6,178,387	6,176,035	6,183,257	6,204,927	6,245,314	6,265,347
Massachusetts	7,033,112	6,985,320	6,996,721	7,025,465	7,073,479	7,138,560	7,154,084
Michigan	10,079,362	10,072,294	10,042,362	10,043,906	10,062,124	10,099,962	10,127,884
Minnesota	5,706,733	5,710,562	5,714,055	5,727,565	5,752,998	5,797,405	5,830,405
Mississippi	2,961,264	2,958,385	2,947,603	2,941,237	2,942,470	2,950,172	2,954,160
Missouri	6,154,913	6,155,074	6,172,551	6,179,285	6,205,956	6,243,544	6,270,541
Montana	1,084,221	1,087,156	1,106,416	1,121,533	1,130,612	1,137,557	1,144,694
Nebraska	1,961,980	1,963,318	1,964,697	1,972,595	1,988,172	2,005,591	2,018,006
Nevada	3,105,593	3,116,851	3,148,472	3,177,672	3,211,077	3,253,543	3,282,188
New Hampshire	1,377,573	1,378,752	1,387,907	1,396,647	1,401,530	1,408,518	1,415,342
New Jersey	9,289,024	9,270,476	9,266,509	9,298,402	9,395,315	9,506,354	9,548,215
New Mexico	2,117,492	2,118,446	2,117,300	2,112,859	2,119,349	2,126,774	2,125,498
New York	20,203,696	20,122,262	19,835,345	19,713,025	19,786,543	20,001,419	20,002,427
North Carolina	10,441,392	10,450,215	10,565,503	10,705,768	10,871,849	11,052,061	11,197,968
North Dakota	779,136	779,612	777,977	780,191	787,071	793,387	799,358
Ohio	11,799,445	11,798,534	11,761,443	11,764,950	11,808,390	11,860,621	11,900,510
Oklahoma	3,959,354	3,965,243	3,992,760	4,025,327	4,062,716	4,097,758	4,123,288
Oregon	4,237,282	4,243,544	4,254,691	4,245,964	4,250,392	4,265,324	4,273,586
Pennsylvania	13,002,753	12,995,576	13,016,628	12,984,655	13,009,406	13,045,848	13,059,432
Rhode Island	1,097,357	1,096,487	1,097,381	1,098,275	1,101,183	1,110,415	1,114,521
South Carolina	5,118,250	5,131,992	5,194,346	5,288,957	5,390,798	5,490,316	5,570,274
South Dakota	886,656	887,808	896,303	909,156	917,739	927,110	935,094
Tennessee	6,912,319	6,927,736	6,966,687	7,063,325	7,153,029	7,251,291	7,315,076
Texas	29,149,498	29,237,895	29,572,672	30,118,002	30,719,247	31,318,578	31,709,821
Utah	3,271,601	3,283,970	3,339,874	3,393,928	3,449,259	3,502,983	3,538,904
Vermont	643,077	642,965	647,238	647,614	647,722	646,521	644,663
Virginia	8,631,419	8,637,303	8,660,007	8,681,038	8,732,034	8,819,642	8,880,107
Washington	7,707,519	7,726,812	7,744,316	7,786,828	7,838,655	7,927,958	8,001,020
West Virginia	1,793,759	1,791,670	1,785,921	1,774,003	1,770,036	1,767,402	1,766,147
Wisconsin	5,894,323	5,897,371	5,882,128	5,903,472	5,930,350	5,957,168	5,972,787
Wyoming	576,872	577,669	579,662	581,742	584,666	586,722	588,753

The Census Bureau has reviewed this data product to ensure appropriate access, use, and disclosure avoidance protection of the confidential source data used to produce this product (Data Management System (DMS) number: P-6000042 and P-7501659. Disclosure Review Board (DRB) approval number: CBDRB-FY25-0466).

The estimates are based on the 2020 Modified Age and Race Census (MARC) file and include changes from Count Question Resolution, the Post-Census Group Quarters Review, and geographic revisions. For population estimates methodology statements, see <https://www.census.gov/programs-surveys/popest/technical-documentation/methodology.html>. See Geographic Terms and Definitions at <https://www.census.gov/programs-surveys/popest/guidance-geographies/terms-and-definitions.html> for a list of the states that are included in each region. All geographic boundaries for the 2025 population estimates series are as of January 1, 2025.

Table 2. Annual and Cumulative Estimates of Resident Population Change for the United States, Regions, States, District of Columbia and Region and State Rankings: April 1, 2020 to July 1, 2025

Geographic Area	Change, July 1, 2024 to July 1, 2025		Change, April 1, 2020 to July 1, 2025		National Ranking of Regions and States			
					Change, July 1, 2024 to July 1, 2025		Change, April 1, 2020 to July 1, 2025	
	Number	Percent	Number	Percent	Number	Percent	Number	Percent
United States	1,781,060	0.5	10,268,744	3.1	(X)	(X)	(X)	(X)
Northeast	101,532	0.2	424,494	0.7	4	4	4	4
Midwest	244,385	0.4	763,204	1.1	3	2	3	3
South	1,171,911	0.9	7,552,378	6.0	1	1	1	1
West	263,232	0.3	1,528,668	1.9	2	3	2	2
Alabama	30,033	0.6	167,651	3.3	15	20	16	19
Alaska	733	0.1	3,887	0.5	46	44	43	40
Arizona	67,394	0.9	465,714	6.5	7	8	5	8
Arkansas	18,711	0.6	103,261	3.4	24	19	21	18
California	-9,465	-	-200,394	-0.5	51	47	50	46
Colorado	24,059	0.4	237,235	4.1	21	29	12	15
Connecticut	14,047	0.4	80,746	2.2	28	30	25	26
Delaware	9,829	0.9	70,002	7.1	32	6	27	7
District of Columbia	2,335	0.3	4,101	0.6	43	33	42	39
Florida	196,680	0.8	1,924,311	8.9	2	13	2	2
Georgia	98,540	0.9	588,887	5.5	4	11	4	12
Hawaii	-2,132	-0.1	-22,447	-1.5	50	50	46	51
Idaho	28,861	1.4	190,610	10.4	16	2	13	1
Illinois	16,108	0.1	-102,600	-0.8	25	42	49	47
Indiana	38,579	0.6	186,728	2.8	12	22	14	23
Iowa	7,933	0.2	47,805	1.5	35	38	34	33
Kansas	11,968	0.4	39,234	1.3	31	28	35	35
Kentucky	22,818	0.5	100,577	2.2	22	23	23	27
Louisiana	3,311	0.1	-39,705	-0.9	42	45	48	48
Maine	6,436	0.5	51,656	3.8	38	25	31	17
Maryland	20,033	0.3	83,707	1.4	23	35	24	34
Massachusetts	15,524	0.2	120,972	1.7	27	39	19	31
Michigan	27,922	0.3	48,522	0.5	18	36	32	41
Minnesota	33,000	0.6	123,672	2.2	14	21	18	28
Mississippi	3,988	0.1	-7,104	-0.2	41	41	45	45
Missouri	26,997	0.4	115,628	1.9	19	27	20	30
Montana	7,137	0.6	60,473	5.6	36	16	28	11
Nebraska	12,415	0.6	56,026	2.9	30	18	30	21
Nevada	28,645	0.9	176,595	5.7	17	9	15	10
New Hampshire	6,824	0.5	37,769	2.7	37	24	36	24
New Jersey	41,861	0.4	259,191	2.8	10	26	10	22
New Mexico	-1,276	-0.1	8,006	0.4	48	48	41	43
New York	1,008	-	-201,269	-1.0	45	46	51	49
North Carolina	145,907	1.3	756,576	7.2	3	3	3	6
North Dakota	5,971	0.8	20,222	2.6	39	14	38	25
Ohio	39,889	0.3	101,065	0.9	11	34	22	38
Oklahoma	25,530	0.6	163,934	4.1	20	17	17	14
Oregon	8,262	0.2	36,304	0.9	33	40	37	37
Pennsylvania	13,584	0.1	56,679	0.4	29	43	29	42
Rhode Island	4,106	0.4	17,164	1.6	40	31	39	32
South Carolina	79,958	1.5	452,024	8.8	5	1	6	3
South Dakota	7,984	0.9	48,438	5.5	34	12	33	13
Tennessee	63,785	0.9	402,757	5.8	8	10	7	9
Texas	391,243	1.2	2,560,323	8.8	1	4	1	4
Utah	35,921	1.0	267,303	8.2	13	5	9	5
Vermont	-1,858	-0.3	1,586	0.2	49	51	44	44
Virginia	60,465	0.7	248,688	2.9	9	15	11	20
Washington	73,062	0.9	293,501	3.8	6	7	8	16
West Virginia	-1,255	-0.1	-27,612	-1.5	47	49	47	50
Wisconsin	15,619	0.3	78,464	1.3	26	37	26	36
Wyoming	2,031	0.3	11,881	2.1	44	32	40	29

Dash (-) represents zero or rounds to zero.

(X) Not applicable.

The Census Bureau has reviewed this data product to ensure appropriate access, use, and disclosure avoidance protection of the confidential source data used to produce this product (Data Management System (DMS) number: P-6000042 and P-7501659. Disclosure Review Board (DRB) approval number: CBDRB-FY25-0466).

The estimates are based on the 2020 Modified Age and Race Census (MARC) file and include changes from Count Question Resolution, the Post-Census Group Quarters Review, and geographic revisions. For population estimates methodology statements, see <https://www.census.gov/programs-surveys/popest/technical-documentation/methodology.html>. See Geographic Terms and Definitions at <https://www.census.gov/programs-surveys/popest/guidance-geographies/terms-and-definitions.html> for a list of the states that are included in each region. All geographic boundaries for the 2025 population estimates series are as of January 1, 2025.

Table 3. Annual Estimates of the Components of Resident Population Change for the United States, Regions, States, and District of Columbia: July 1, 2024 to July 1, 2025

Geographic Area	Annual Change, July 1, 2024 to July 1, 2025						
	Total Population Change ¹	Vital Events			Net Migration		
		Natural Change	Births	Deaths	Total	International ²	Domestic
United States	1,781,060	518,858	3,620,461	3,101,603	1,262,202	1,262,202	(X)
Northeast	101,532	59,573	572,507	512,934	40,830	246,382	-205,552
Midwest	244,385	46,417	737,743	691,326	196,201	180,161	16,040
South	1,171,911	222,866	1,481,266	1,258,400	953,795	596,005	357,790
West	263,232	190,002	828,945	638,943	71,376	239,654	-168,278
Alabama	30,033	-2,188	57,680	59,868	32,304	8,946	23,358
Alaska	733	3,308	8,867	5,559	-2,566	1,959	-4,525
Arizona	67,394	7,649	78,926	71,277	59,326	28,219	31,107
Arkansas	18,711	-1,224	35,414	36,638	19,945	5,470	14,475
California	-9,465	109,715	398,632	288,917	-119,799	109,278	-229,077
Colorado	24,059	20,608	65,380	44,772	3,256	15,356	-12,100
Connecticut	14,047	2,283	34,700	32,417	11,589	17,534	-5,945
Delaware	9,829	-554	10,328	10,882	10,328	3,473	6,855
District of Columbia	2,335	2,516	7,336	4,820	-213	3,915	-4,128
Florida	196,680	-1,333	225,971	227,304	201,191	178,674	22,517
Georgia	98,540	28,631	126,446	97,815	69,912	42,579	27,333
Hawaii	-2,132	2,024	14,631	12,607	-4,108	4,768	-8,876
Idaho	28,861	6,900	23,695	16,795	22,063	2,148	19,915
Illinois	16,108	10,903	125,129	114,226	4,735	44,752	-40,017
Indiana	38,579	8,561	79,648	71,087	30,049	17,852	12,197
Iowa	7,933	2,949	36,470	33,521	4,933	5,903	-970
Kansas	11,968	4,951	34,416	29,465	6,921	7,440	-519
Kentucky	22,818	-83	52,982	53,065	22,978	15,709	7,269
Louisiana	3,311	2,774	51,886	49,112	513	14,900	-14,387
Maine	6,436	-5,019	11,783	16,802	11,446	4,040	7,406
Maryland	20,033	11,444	65,090	53,646	8,376	20,503	-12,127
Massachusetts	15,524	8,419	68,055	59,636	6,900	40,240	-33,340
Michigan	27,922	-4,998	99,680	104,678	32,502	30,706	1,796
Minnesota	33,000	12,071	62,576	50,505	20,786	12,486	8,300
Mississippi	3,988	-2,607	33,168	35,775	6,534	7,451	-917
Missouri	26,997	177	68,377	68,200	26,693	12,665	14,028
Montana	7,137	-90	11,348	11,438	7,247	899	6,348
Nebraska	12,415	6,136	24,396	18,260	6,233	6,599	-366
Nevada	28,645	3,051	32,511	29,460	25,465	10,551	14,914
New Hampshire	6,824	-2,167	11,911	14,078	8,957	2,403	6,554
New Jersey	41,861	26,023	100,999	74,976	15,636	53,064	-37,428
New Mexico	-1,276	-1,885	20,235	22,120	612	2,879	-2,267
New York	1,008	42,815	203,078	160,263	-41,952	95,634	-137,586
North Carolina	145,907	15,129	123,046	107,917	130,954	46,890	84,064
North Dakota	5,971	2,630	9,760	7,130	3,322	2,810	512
Ohio	39,889	-729	126,825	127,554	40,431	28,505	11,926
Oklahoma	25,530	2,559	48,603	46,044	22,912	8,420	14,492
Oregon	8,262	-3,764	38,334	42,098	11,864	9,636	2,228
Pennsylvania	13,584	-10,708	126,981	137,689	23,985	26,921	-2,936
Rhode Island	4,106	-304	10,021	10,325	4,372	5,923	-1,551
South Carolina	79,958	564	59,681	59,117	79,552	12,930	66,622
South Dakota	7,984	2,605	11,299	8,694	5,352	3,183	2,169
Tennessee	63,785	3,597	84,408	80,811	60,379	17,990	42,389
Texas	391,243	157,711	390,203	232,492	234,774	167,475	67,299
Utah	35,921	24,961	46,948	21,987	10,844	7,501	3,343
Vermont	-1,858	-1,769	4,979	6,748	-103	623	-726
Virginia	60,465	13,817	92,070	78,253	46,704	40,436	6,268
Washington	73,062	17,230	83,368	66,138	55,440	46,202	9,238
West Virginia	-1,255	-7,887	16,954	24,841	6,652	244	6,408
Wisconsin	15,619	1,161	59,167	58,006	14,244	7,260	6,984
Wyoming	2,031	295	6,070	5,775	1,732	258	1,474

(X) Not applicable.

¹ Total population change includes a residual. This residual represents the change in population that cannot be attributed to any specific demographic component. See Population Estimates Terms and Definitions at <https://www.census.gov/programs-surveys/popest/about/glossary.html>.

² Net international migration for the United States includes the international migration of both U.S.-born and non-U.S.-born populations. Specifically, it includes: (a) the net international migration of the non-U.S. born, (b) the net migration of U.S. born to and from the United States, (c) the net migration between the United States and Puerto Rico, and (d) the net movement of the Armed Forces population between the United States and overseas.

Table 4. Cumulative Estimates of the Components of Resident Population Change for the United States, Regions, States, and District of Columbia: April 1, 2020 to July 1, 2025

Geographic Area	Cumulative Change, April 1, 2020 to July 1, 2025						
	Total Population Change ¹	Vital Events			Net Migration		
		Natural Change	Births	Deaths	Total	International ²	Domestic
United States	10,268,744	1,939,907	19,036,536	17,096,629	8,328,837	8,328,837	(X)
Northeast	424,494	158,161	3,035,048	2,876,887	287,757	1,792,061	-1,504,304
Midwest	763,204	110,704	3,908,729	3,798,025	642,234	1,154,999	-512,765
South	7,552,378	783,438	7,700,151	6,916,713	6,741,875	3,584,350	3,157,525
West	1,528,668	887,604	4,392,608	3,505,004	656,971	1,797,427	-1,140,456
Alabama	167,651	-27,563	303,445	331,008	195,050	54,002	141,048
Alaska	3,887	18,405	48,294	29,889	-14,456	9,814	-24,270
Arizona	465,714	19,241	408,880	389,639	446,276	163,650	282,626
Arkansas	103,261	-12,691	185,644	198,335	115,310	31,766	83,544
California	-200,394	531,304	2,149,615	1,618,311	-718,055	973,812	-1,691,867
Colorado	237,235	87,669	330,355	242,686	147,947	130,218	17,729
Connecticut	80,746	2,610	182,361	179,751	82,224	110,143	-27,919
Delaware	70,002	-3,150	55,054	58,204	72,899	19,687	53,212
District of Columbia	4,101	14,157	42,326	28,169	-6,501	27,402	-33,903
Florida	1,924,311	-102,970	1,152,429	1,255,399	2,023,675	1,133,327	890,348
Georgia	588,887	117,082	655,379	538,297	468,194	235,345	232,849
Hawaii	-22,447	12,812	79,689	66,877	-34,923	24,479	-59,402
Idaho	190,610	28,510	118,599	90,089	163,930	24,146	139,784
Illinois	-102,600	37,108	672,636	635,528	-142,687	313,691	-456,378
Indiana	186,728	26,122	416,300	390,178	159,891	117,923	41,968
Iowa	47,805	12,433	190,875	178,442	34,866	45,014	-10,148
Kansas	39,234	18,332	180,137	161,805	20,000	44,277	-24,277
Kentucky	100,577	-18,600	274,520	293,120	117,607	81,789	35,818
Louisiana	-39,705	12,073	289,715	277,642	-53,051	90,755	-143,806
Maine	51,656	-26,514	61,965	88,479	77,918	21,143	56,775
Maryland	83,707	56,788	352,146	295,358	24,343	159,113	-134,770
Massachusetts	120,972	26,617	356,541	329,924	104,620	286,765	-182,145
Michigan	48,522	-44,601	533,883	578,484	90,878	156,577	-65,699
Minnesota	123,672	63,075	330,813	267,738	59,610	96,812	-37,202
Mississippi	-7,104	-18,670	180,776	199,446	11,316	34,204	-22,888
Missouri	115,628	-11,801	359,248	371,049	126,379	69,708	56,671
Montana	60,473	-3,631	58,554	62,185	64,302	4,792	59,510
Nebraska	56,026	29,523	128,099	98,576	26,361	40,453	-14,092
Nevada	176,595	11,343	172,168	160,825	165,020	68,974	96,046
New Hampshire	37,769	-11,368	63,191	74,559	48,550	12,303	36,247
New Jersey	259,191	101,219	529,891	428,672	157,634	379,828	-222,194
New Mexico	8,006	-11,473	110,934	122,407	19,205	29,745	-10,540
New York	-201,269	167,522	1,082,933	915,411	-356,676	749,337	-1,106,013
North Carolina	756,576	48,219	632,711	584,492	708,901	231,980	476,921
North Dakota	20,222	13,465	51,403	37,938	7,038	13,088	-6,050
Ohio	101,065	-45,739	671,533	717,272	146,471	176,953	-30,482
Oklahoma	163,934	3,973	252,882	248,909	158,938	51,694	107,244
Oregon	36,304	-19,463	206,366	225,829	56,066	56,736	-670
Pennsylvania	56,679	-89,333	678,195	767,528	142,431	196,721	-54,290
Rhode Island	17,164	-3,923	52,996	56,919	20,777	30,927	-10,150
South Carolina	452,024	-17,705	302,975	320,680	466,148	87,086	379,062
South Dakota	48,438	11,765	58,940	47,175	36,099	12,842	23,257
Tennessee	402,757	-9,876	432,116	441,992	408,268	115,541	292,727
Texas	2,560,323	723,693	2,004,393	1,280,700	1,830,571	1,017,836	812,735
Utah	267,303	126,873	241,872	114,999	140,030	85,137	54,893
Vermont	1,586	-8,669	26,975	35,644	10,279	4,894	5,385
Virginia	248,688	68,140	494,319	426,179	178,516	207,685	-29,169
Washington	293,501	85,478	435,274	349,796	210,277	223,256	-12,979
West Virginia	-27,612	-49,462	89,321	138,783	21,691	5,138	16,553
Wisconsin	78,464	1,022	314,862	313,840	77,328	67,661	9,667
Wyoming	11,881	536	32,008	31,472	11,352	2,668	8,684

(X) Not applicable.

¹ Total population change includes a residual. This residual represents the change in population that cannot be attributed to any specific demographic component. See Population Estimates Terms and Definitions at <https://www.census.gov/programs-surveys/popest/about/glossary.html>.

² Net international migration for the United States includes the international migration of both U.S.-born and non-U.S.-born populations. Specifically, it includes: (a) the net international migration of the non-U.S. born, (b) the net migration of U.S. born to and from the United States, (c) the net migration between the United States and Puerto Rico, and (d) the net movement of the Armed Forces population between the United States and overseas.

Source: U.S. Census Bureau, Population Division

Release Date: January 2026