

FOR IMMEDIATE RELEASE

Thursday, December 22, 2022

Contact: Amy Bittner, Principal Economist

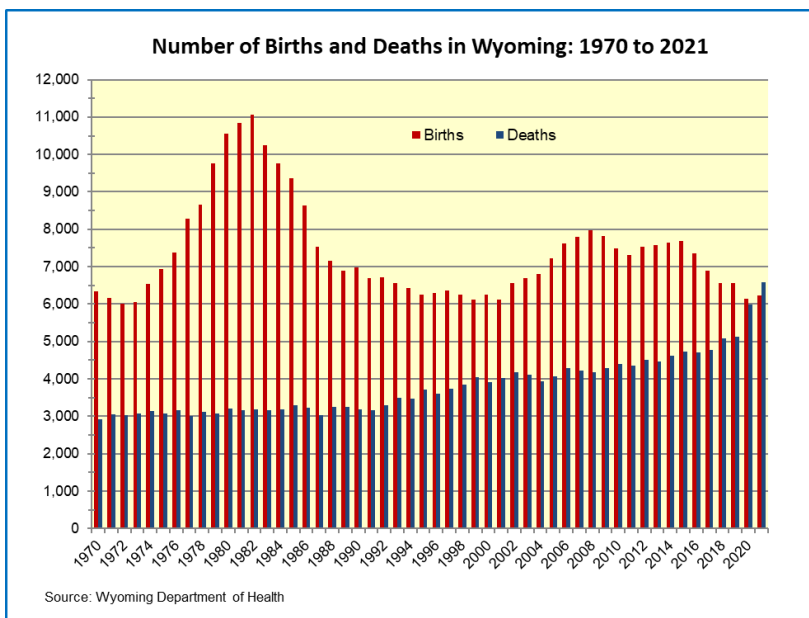
WYOMING'S POPULATION INCREASES DUE TO IN-MIGRATION

CHEYENNE -- Wyoming's total resident population grew slightly to 581,381 in July 2022, according to estimates just released by the U.S. Census Bureau. The annual increase from July 2021 was 1,898 persons, or 0.3 percent. Wyoming had similar annual growth from 2020 to 2021. There are two factors that contribute to population change: natural change and net migration. The natural change is the number of births less the number of deaths. Wyoming had 6,189 births less 6,679 deaths for a natural decrease of 490 persons from July 2021 to July 2022. This is the first time in decades that the number of deaths exceeded the number of births in Wyoming. Estimated net migration is in-migration less outmigration. Wyoming's net migration was 2,494. This positive net migration means that 2,494 more persons moved into Wyoming than moved out of the State between July 2021 and July 2022. People moving into Wyoming was the only reason for the positive population change over the year since the number of deaths in outnumbered births in the state.

The U.S. population grew 0.4 percent or about 1.26 million persons from July 2021 to July 2022. The regions of the U.S. that experienced increases in population over the year included the South and the West. Florida had the largest percentage growth during the year, 1.9%. Idaho was right behind at 1.8%. Other Western states made the top 10 in terms of percentage growth: Montana (1.5%), Arizona (1.3%) and Utah (1.2%). Wyoming's annual growth ranked 22nd highest in the nation.

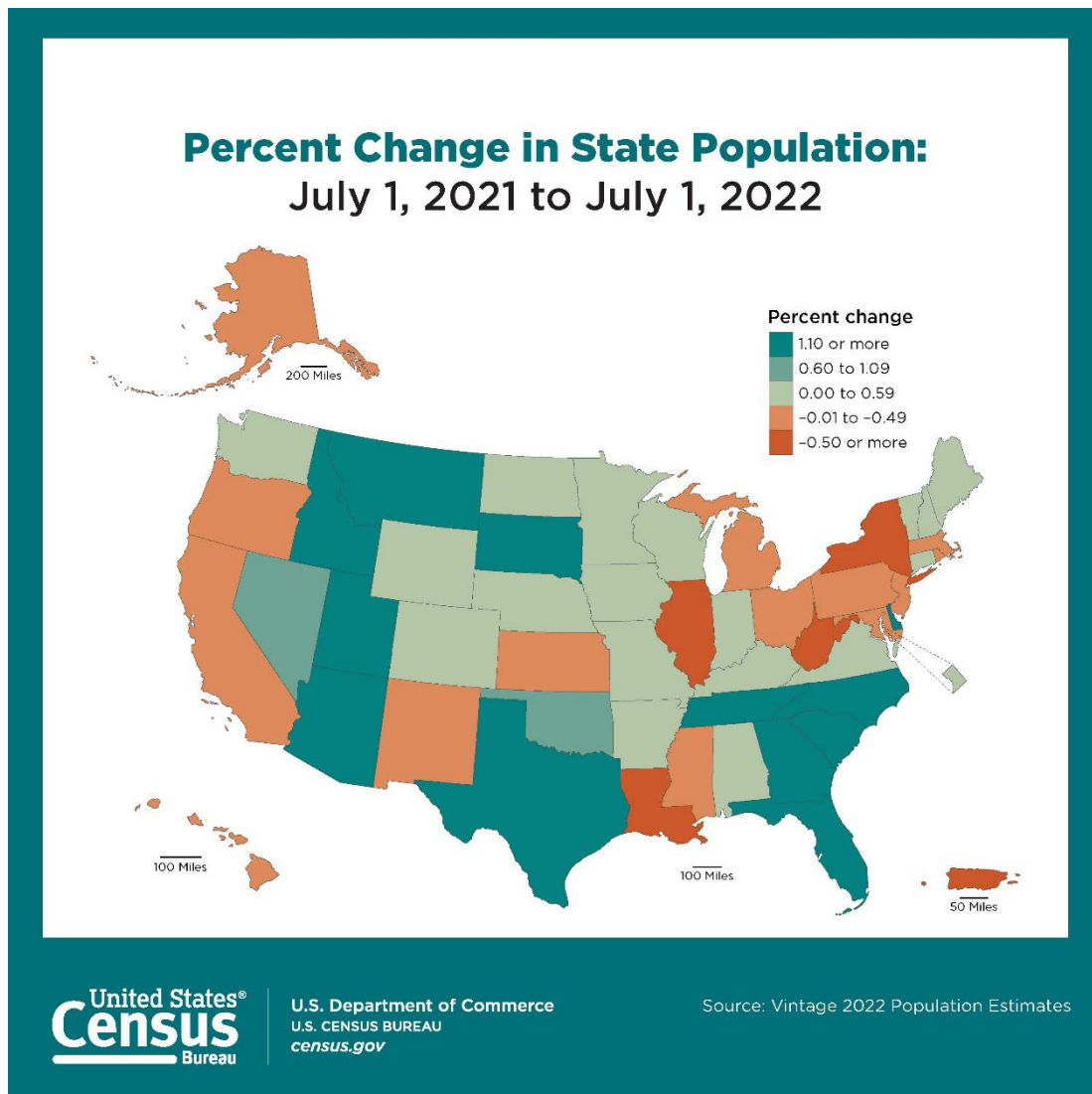
The Northeast and Midwest experienced population declines during the year. A total of eighteen states lost population over the year, which were led by New York (-0.9%). Texas gained the largest number of residents over the year, 470,708. This increase pushed the population of Texas to over 30 million. The only other state with a population this high is California.

Overall, for the U.S., the increase in population growth comes after historically low annual growth from July 2020 to July 2021. The primary driver of this growth was net international migration which added 1.0 million to the population. This increase in population shows that migration patterns may be returning to pre-pandemic levels.



“Wyoming’s natural increase in population has slowed down dramatically in the last few years and the new population data further exemplifies that with the number of deaths outnumbering births in the State,” according to Amy Bittner, Principal Economist with the State of Wyoming Economic Analysis Division. She also stated that “This trend is not unique to Wyoming. Twenty-four states experienced negative natural change (more deaths than births) over the year.” The effects of the COVID-19 pandemic contributed to the higher number of deaths during the year.

Wyoming’s unemployment rate was 3.0% in July 2022, which is the lowest it has been since July 2008. The state’s employment picture was much brighter than two years earlier when the COVID-19 pandemic hit. Wyoming’s economy has been recovering from the downturn caused by the pandemic, particularly in the mining, retail trade, and leisure & hospitality services industries. “Wyoming’s positive net migration could indicate that the experience of COVID-19 may have prompted more people to move to Wyoming than leave the state,” according to Bittner. She also mentioned that, “COVID-19 has also changed the landscape of how people work. For some sectors of the economy, telework opportunities are now available to workers. This provides workers with more choices on where they live. Some of these permanent teleworkers may be choosing Wyoming as their home.”



Other Wyoming population data, including the 2020 Census are available on the Economic Analysis Division’s website, <http://eadiv.state.wy.us>

Table 1. Annual Estimates of the Resident Population for the United States, Regions, and States: April 1, 2020 to July 1, 2022

Geographic Area	April 1, 2020 Estimates Base	Population Estimate (as of July 1)		
		2020	2021	2022
United States	331,449,520	331,511,512	332,031,554	333,287,557
Northeast	57,609,156	57,448,898	57,259,257	57,040,406
Midwest	68,985,537	68,961,043	68,836,505	68,787,595
South	126,266,262	126,450,613	127,346,029	128,716,192
West	78,588,565	78,650,958	78,589,763	78,743,364
Alabama	5,024,356	5,031,362	5,049,846	5,074,296
Alaska	733,378	732,923	734,182	733,583
Arizona	7,151,507	7,179,943	7,264,877	7,359,197
Arkansas	3,011,555	3,014,195	3,028,122	3,045,637
California	39,538,245	39,501,653	39,142,991	39,029,342
Colorado	5,773,733	5,784,865	5,811,297	5,839,926
Connecticut	3,605,942	3,597,362	3,623,355	3,626,205
Delaware	989,957	992,114	1,004,807	1,018,396
District of Columbia	689,546	670,868	668,791	671,803
Florida	21,538,226	21,589,602	21,828,069	22,244,823
Georgia	10,711,937	10,729,828	10,788,029	10,912,876
Hawaii	1,455,273	1,451,043	1,447,154	1,440,196
Idaho	1,839,092	1,849,202	1,904,314	1,939,033
Illinois	12,812,545	12,786,580	12,686,469	12,582,032
Indiana	6,785,668	6,788,799	6,813,532	6,833,037
Iowa	3,190,372	3,190,571	3,197,689	3,200,517
Kansas	2,937,847	2,937,919	2,937,922	2,937,150
Kentucky	4,505,893	4,507,445	4,506,589	4,512,310
Louisiana	4,657,749	4,651,664	4,627,098	4,590,241
Maine	1,362,341	1,363,557	1,377,238	1,385,340
Maryland	6,177,213	6,173,205	6,174,610	6,164,660
Massachusetts	7,029,949	6,995,729	6,989,690	6,981,974
Michigan	10,077,325	10,069,577	10,037,504	10,034,113
Minnesota	5,706,504	5,709,852	5,711,471	5,717,184
Mississippi	2,961,288	2,958,141	2,949,586	2,940,057
Missouri	6,154,920	6,153,998	6,169,823	6,177,957
Montana	1,084,197	1,087,075	1,106,227	1,122,867
Nebraska	1,961,489	1,962,642	1,963,554	1,967,923
Nevada	3,104,624	3,115,648	3,146,402	3,177,772
New Hampshire	1,377,518	1,378,587	1,387,505	1,395,231
New Jersey	9,289,031	9,271,689	9,267,961	9,261,699
New Mexico	2,117,527	2,118,390	2,116,677	2,113,344
New York	20,201,230	20,108,296	19,857,492	19,677,151
North Carolina	10,439,414	10,449,445	10,565,885	10,698,973
North Dakota	779,091	779,518	777,934	779,261
Ohio	11,799,374	11,797,517	11,764,342	11,756,058
Oklahoma	3,959,346	3,964,912	3,991,225	4,019,800
Oregon	4,237,291	4,244,795	4,256,301	4,240,137
Pennsylvania	13,002,689	12,994,440	13,012,059	12,972,008
Rhode Island	1,097,371	1,096,345	1,096,985	1,093,734
South Carolina	5,118,429	5,131,848	5,193,266	5,282,634
South Dakota	886,677	887,799	896,164	909,824
Tennessee	6,910,786	6,925,619	6,968,351	7,051,339
Texas	29,145,428	29,232,474	29,558,864	30,029,572
Utah	3,271,614	3,283,785	3,339,113	3,380,800
Vermont	643,085	642,893	646,972	647,064
Virginia	8,631,384	8,636,471	8,657,365	8,683,619
Washington	7,705,247	7,724,031	7,740,745	7,785,786
West Virginia	1,793,755	1,791,420	1,785,526	1,775,156
Wisconsin	5,893,725	5,896,271	5,880,101	5,892,539
Wyoming	576,837	577,605	579,483	581,381

Note: The estimates are developed from a base that incorporates the 2020 Census, Vintage 2020 estimates, and (for the U.S. only) 2020 Demographic Analysis estimates. For population estimates methodology statements, see <http://www.census.gov/programs-surveys/popest/technical-documentation/methodology.html>. See Geographic Terms and Definitions at <http://www.census.gov/programs-surveys/popest/guidance-geographies/terms-and-definitions.html> for a list of the states that are included in each region. All geographic boundaries for the 2022 population estimates series are as of January 1, 2022.

Table 2. Estimates of Resident Population Change for the United States, Regions, and States, and Rankings:
July 1, 2021 to July 1, 2022

Geographic Area	Population Estimate (as of July 1)		Change, 2021 to 2022		National Ranking of Regions and States			
					Population Estimate (as of July 1)		Change, 2021 to 2022	
	2021	2022	Number	Percent	2021	2022	Number	Percent
United States	332,031,554	333,287,557	1,256,003	0.4	(X)	(X)	(X)	(X)
Northeast	57,259,257	57,040,406	-218,851	-0.4	4	4	4	4
Midwest	68,836,505	68,787,595	-48,910	-0.1	3	3	3	3
South	127,346,029	128,716,192	1,370,163	1.1	1	1	1	1
West	78,589,763	78,743,364	153,601	0.2	2	2	2	2
Alabama	5,049,846	5,074,296	24,450	0.5	24	24	15	20
Alaska	734,182	733,583	-599	-0.1	48	48	34	38
Arizona	7,264,877	7,359,197	94,320	1.3	14	14	5	8
Arkansas	3,028,122	3,045,637	17,515	0.6	33	33	17	17
California	39,142,991	39,029,342	-113,649	-0.3	1	1	50	42
Colorado	5,811,297	5,839,926	28,629	0.5	21	21	12	19
Connecticut	3,623,355	3,626,205	2,850	0.1	29	29	29	32
Delaware	1,004,807	1,018,396	13,589	1.4	45	45	20	7
District of Columbia	668,791	671,803	3,012	0.5	49	49	28	21
Florida	21,828,069	22,244,823	416,754	1.9	3	3	2	1
Georgia	10,788,029	10,912,876	124,847	1.2	8	8	4	12
Hawaii	1,447,154	1,440,196	-6,958	-0.5	40	40	40	47
Idaho	1,904,314	1,939,033	34,719	1.8	38	38	10	2
Illinois	12,686,469	12,582,032	-104,437	-0.8	6	6	49	50
Indiana	6,813,532	6,833,037	19,505	0.3	17	17	16	24
Iowa	3,197,689	3,200,517	2,828	0.1	31	31	30	31
Kansas	2,937,922	2,937,150	-772	0.0	35	35	35	34
Kentucky	4,506,589	4,512,310	5,721	0.1	26	26	25	29
Louisiana	4,627,098	4,590,241	-36,857	-0.8	25	25	47	49
Maine	1,377,238	1,385,340	8,102	0.6	42	42	23	15
Maryland	6,174,610	6,164,660	-9,950	-0.2	18	19	44	41
Massachusetts	6,989,690	6,981,974	-7,716	-0.1	15	16	41	39
Michigan	10,037,504	10,034,113	-3,391	0.0	10	10	38	35
Minnesota	5,711,471	5,717,184	5,713	0.1	22	22	26	30
Mississippi	2,949,586	2,940,057	-9,529	-0.3	34	34	43	45
Missouri	6,169,823	6,177,957	8,134	0.1	19	18	22	28
Montana	1,106,227	1,122,867	16,640	1.5	43	43	18	6
Nebraska	1,963,554	1,967,923	4,369	0.2	37	37	27	25
Nevada	3,146,402	3,177,772	31,370	1.0	32	32	11	13
New Hampshire	1,387,505	1,395,231	7,726	0.6	41	41	24	18
New Jersey	9,267,961	9,261,699	-6,262	-0.1	11	11	39	36
New Mexico	2,116,677	2,113,344	-3,333	-0.2	36	36	37	40
New York	19,857,492	19,677,151	-180,341	-0.9	4	4	51	51
North Carolina	10,565,885	10,698,973	133,088	1.3	9	9	3	9
North Dakota	777,934	779,261	1,327	0.2	47	47	32	27
Ohio	11,764,342	11,756,058	-8,284	-0.1	7	7	42	37
Oklahoma	3,991,225	4,019,800	28,575	0.7	28	28	13	14
Oregon	4,256,301	4,240,137	-16,164	-0.4	27	27	46	46
Pennsylvania	13,012,059	12,972,008	-40,051	-0.3	5	5	48	44
Rhode Island	1,096,985	1,093,734	-3,251	-0.3	44	44	36	43
South Carolina	5,193,266	5,282,634	89,368	1.7	23	23	6	3
South Dakota	896,164	909,824	13,660	1.5	46	46	19	5
Tennessee	6,968,351	7,051,339	82,988	1.2	16	15	7	11
Texas	29,558,864	30,029,572	470,708	1.6	2	2	1	4
Utah	3,339,113	3,380,800	41,687	1.2	30	30	9	10
Vermont	646,972	647,064	92	0.0	50	50	33	33
Virginia	8,657,365	8,683,619	26,254	0.3	12	12	14	23
Washington	7,740,745	7,785,786	45,041	0.6	13	13	8	16
West Virginia	1,785,526	1,775,156	-10,370	-0.6	39	39	45	48
Wisconsin	5,880,101	5,892,539	12,438	0.2	20	20	21	26
Wyoming	579,483	581,381	1,898	0.3	51	51	31	22

(X) Not applicable.

Note: The estimates are developed from a base that incorporates the 2020 Census, Vintage 2020 estimates, and (for the U.S. only) 2020 Demographic Analysis estimates. For population estimates methodology statements, see <http://www.census.gov/programs-surveys/popest/technical-documentation/methodology.html>. See Geographic Terms and Definitions at <http://www.census.gov/programs-surveys/popest/guidance-geographies/terms-and-definitions.html> for a list of the states that are included in each region. All geographic boundaries for the 2022 population estimates series are as of January 1, 2022.

Table 3. Estimates of the Components of Resident Population Change: July 1, 2021 to July 1, 2022

Geographic Area	Total Population Change ¹	Natural Change	Vital Events		Net Migration		
			Births	Deaths	Total	International ²	Domestic
United States	1,256,003	245,080	3,688,179	3,443,099	1,010,923	1,010,923	(X)
Northeast	-218,851	29,215	593,222	564,007	-246,272	214,464	-460,736
Midwest	-48,910	-8,638	759,934	768,572	-28,781	145,268	-174,049
South	1,370,163	70,098	1,476,296	1,406,198	1,282,675	414,740	867,935
West	153,601	154,405	858,727	704,322	3,301	236,451	-233,150
Alabama	24,450	-8,590	58,280	66,870	33,206	4,597	28,609
Alaska	-599	3,092	9,488	6,396	-3,755	2,371	-6,126
Arizona	94,320	-566	78,763	79,329	93,203	22,219	70,984
Arkansas	17,515	-3,936	36,251	40,187	21,523	3,314	18,209
California	-113,649	106,155	424,652	318,497	-217,515	125,715	-343,230
Colorado	28,629	13,705	63,086	49,381	15,742	10,366	5,376
Connecticut	2,850	916	35,818	34,902	2,749	16,296	-13,547
Delaware	13,589	-718	10,744	11,462	14,277	2,451	11,826
District of Columbia	3,012	2,540	8,096	5,556	911	4,558	-3,647
Florida	416,754	-40,216	220,578	260,794	444,484	125,629	318,855
Georgia	124,847	16,181	125,538	109,357	108,691	27,285	81,406
Hawaii	-6,958	2,460	15,788	13,328	-9,427	5,785	-15,212
Idaho	34,719	3,686	22,524	18,838	30,483	1,844	28,639
Illinois	-104,437	4,866	131,491	126,625	-110,127	31,529	-141,656
Indiana	19,505	1,024	80,214	79,190	20,720	15,490	5,230
Iowa	2,828	1,559	36,928	35,369	2,056	9,348	-7,292
Kansas	-772	2,008	34,968	32,960	-1,925	5,484	-7,409
Kentucky	5,721	-8,358	52,496	60,854	14,875	4,455	10,420
Louisiana	-36,857	1,157	57,152	55,995	-38,566	8,106	-46,672
Maine	8,102	-5,943	12,030	17,973	14,125	2,525	11,600
Maryland	-9,950	11,563	69,130	57,567	-21,345	23,756	-45,101
Massachusetts	-7,716	6,303	70,019	63,716	-13,412	43,880	-57,292
Michigan	-3,391	-12,482	105,157	117,639	10,330	18,812	-8,482
Minnesota	5,713	11,617	64,821	53,204	-5,206	14,194	-19,400
Mississippi	-9,529	-4,954	35,060	40,014	-4,123	1,593	-5,716
Missouri	8,134	-5,994	69,255	75,249	15,082	10,058	5,024
Montana	16,640	-1,686	11,173	12,859	17,804	1,801	16,003
Nebraska	4,369	5,105	24,376	19,271	-252	4,018	-4,270
Nevada	31,370	392	33,784	33,392	30,944	10,163	20,781
New Hampshire	7,726	-2,030	12,670	14,700	10,203	3,900	6,303
New Jersey	-6,262	19,751	102,555	82,804	-24,843	39,388	-64,231
New Mexico	-3,333	-4,295	20,955	25,250	1,389	5,893	-4,504
New York	-180,341	35,611	212,145	176,534	-221,634	77,923	-299,557
North Carolina	133,088	6,459	122,179	115,720	126,226	26,430	99,796
North Dakota	1,327	2,799	10,164	7,365	-1,442	1,268	-2,710
Ohio	-8,284	-19,543	129,529	149,072	14,947	24,112	-9,165
Oklahoma	28,575	-3,283	48,107	51,390	32,528	5,737	26,791
Oregon	-16,164	-5,089	41,143	46,232	-10,305	7,026	-17,331
Pennsylvania	-40,051	-23,021	132,099	155,120	-13,216	26,741	-39,957
Rhode Island	-3,251	-566	10,544	11,110	-2,397	2,799	-5,196
South Carolina	89,368	-7,460	57,071	64,531	94,684	10,654	84,030
South Dakota	13,660	2,161	11,392	9,231	11,205	2,781	8,424
Tennessee	82,988	-9,213	81,970	91,183	89,742	8,096	81,646
Texas	470,708	118,159	379,412	261,253	349,575	118,614	230,961
Utah	41,687	23,549	46,912	23,363	18,312	5,414	12,898
Vermont	92	-1,806	5,342	7,148	2,153	1,012	1,141
Virginia	26,254	12,925	96,748	83,823	13,740	37,692	-23,952
Washington	45,041	13,492	84,270	70,778	33,932	37,512	-3,580
West Virginia	-10,370	-12,158	17,484	29,642	2,247	1,773	474
Wisconsin	12,438	-1,758	61,639	63,397	15,831	8,174	7,657
Wyoming	1,898	-490	6,189	6,679	2,494	342	2,152

(X) Not applicable.

Table 4. Cumulative Estimates of the Components of Resident Population Change: April 1, 2020 to July 1, 2022

Geographic Area	Total Population Change ¹	Natural Change	Vital Events		Net Migration		
			Births	Deaths	Total	International ²	Domestic
United States	1,838,037	431,192	8,164,738	7,733,546	1,406,845	1,406,845	(X)
Northeast	-568,750	-5,705	1,312,124	1,317,829	-553,194	299,344	-852,538
Midwest	-197,942	-19,096	1,697,765	1,716,861	-192,192	203,644	-395,836
South	2,449,930	125,506	3,250,442	3,124,936	2,316,894	578,919	1,737,975
West	154,799	330,487	1,904,407	1,573,920	-164,663	324,938	-489,601
Alabama	49,940	-21,832	129,259	151,091	71,884	6,529	65,355
Alaska	205	8,432	21,355	12,923	-8,106	3,306	-11,412
Arizona	207,690	-5,532	172,257	177,789	212,851	30,489	182,362
Arkansas	34,082	-8,980	79,874	88,854	42,809	4,754	38,055
California	-508,903	201,459	939,969	738,510	-699,904	171,223	-871,127
Colorado	66,193	32,810	140,739	107,929	32,506	14,522	17,984
Connecticut	20,263	-3,287	78,179	81,466	22,847	22,923	-76
Delaware	28,439	-2,099	23,543	25,642	30,573	3,454	27,119
District of Columbia	-17,743	5,194	18,587	13,393	-19,856	6,354	-26,210
Florida	706,597	-89,047	478,834	567,881	797,809	175,333	622,476
Georgia	200,939	33,065	276,771	243,706	166,266	38,177	128,089
Hawaii	-15,077	6,842	35,141	28,299	-21,731	7,953	-29,684
Idaho	99,941	10,313	49,863	39,550	91,246	2,599	88,647
Illinois	-230,513	6,349	296,603	290,254	-238,576	43,472	-282,048
Indiana	47,369	1,251	177,200	175,949	44,591	21,897	22,694
Iowa	10,145	3,049	82,052	79,003	6,371	13,248	-6,877
Kansas	-697	5,063	77,759	72,696	-6,711	7,681	-14,392
Kentucky	6,417	-15,426	116,529	131,955	20,430	6,328	14,102
Louisiana	-67,508	414	127,830	127,416	-68,797	11,481	-80,278
Maine	22,999	-11,179	26,607	37,786	34,237	3,595	30,642
Maryland	-12,553	20,341	153,727	133,386	-34,987	33,300	-68,287
Massachusetts	-47,975	6,157	153,672	147,515	-49,603	61,263	-110,866
Michigan	-43,212	-29,226	234,482	263,708	-16,923	26,265	-43,188
Minnesota	10,680	26,917	144,350	117,433	-17,365	20,012	-37,377
Mississippi	-21,231	-12,601	78,535	91,136	-9,125	2,283	-11,408
Missouri	23,037	-12,195	155,271	167,466	34,423	14,190	20,233
Montana	38,670	-2,710	24,791	27,501	41,598	2,557	39,041
Nebraska	6,434	11,404	54,682	43,278	-5,414	5,694	-11,108
Nevada	73,148	2,403	75,239	72,836	70,228	13,911	56,317
New Hampshire	17,713	-4,099	27,771	31,870	21,568	5,530	16,038
New Jersey	-27,332	24,198	225,069	200,871	-52,712	55,037	-107,749
New Mexico	-4,183	-7,845	47,605	55,450	3,253	8,311	-5,058
New York	-524,079	44,830	471,030	426,200	-556,885	108,036	-664,921
North Carolina	259,559	10,940	267,681	256,741	248,898	37,031	211,867
North Dakota	170	5,846	22,785	16,939	-5,434	1,752	-7,186
Ohio	-43,316	-39,559	290,090	329,649	-6,004	33,911	-39,915
Oklahoma	60,454	-5,435	107,055	112,490	64,907	8,100	56,807
Oregon	2,846	-6,562	91,159	97,721	9,036	9,812	-776
Pennsylvania	-30,681	-56,154	294,979	351,133	21,346	37,564	-16,218
Rhode Island	-3,637	-2,743	23,103	25,846	-1,333	3,948	-5,281
South Carolina	164,205	-17,582	126,154	143,736	180,965	15,017	165,948
South Dakota	23,147	4,170	25,291	21,121	18,655	3,944	14,711
Tennessee	140,553	-18,994	180,491	199,485	157,821	11,418	146,403
Texas	884,144	243,520	831,637	588,117	639,314	164,062	475,252
Utah	109,186	54,182	104,519	50,337	54,712	7,587	47,125
Vermont	3,979	-3,428	11,714	15,142	7,341	1,448	5,893
Virginia	52,235	27,930	214,851	186,921	22,987	52,762	-29,775
Washington	80,539	36,938	187,840	150,902	44,796	52,172	-7,376
West Virginia	-18,599	-23,902	39,084	62,986	4,996	2,536	2,460
Wisconsin	-1,186	-2,165	137,200	139,365	195	11,578	-11,383
Wyoming	4,544	-243	13,930	14,173	4,852	496	4,356

(X) Not applicable.

¹ Total population change includes a residual. This residual represents the change in population that cannot be attributed to any specific demographic component. See Population Estimates Terms and Definitions at <https://www.census.gov/programs-surveys/popest/about/glossary.html>.

² Net international migration for the United States includes the international migration of both U.S.-born and non-U.S.-born populations. Specifically, it includes: (a) the net international migration of the non-U.S. born, (b) the net migration of U.S. born to and from the United States, (c) the net migration between the United States and Puerto Rico, and (d) the net movement of the Armed Forces population between the United States and overseas.

Note: The estimates are developed from a base that incorporates the 2020 Census, Vintage 2020 estimates, and (for the U.S. only) 2020 Demographic Analysis estimates. For population estimates methodology statements, see <http://www.census.gov/programs-surveys/popest/technical-documentation/methodology.html>. See Geographic Terms and Definitions at <http://www.census.gov/programs-surveys/popest/guidance-geographies/terms-and-definitions.html> for a list of the states that are included in each region. All geographic boundaries for the 2022 population estimates series are as of January 1, 2022.

Suggested Citation:
Annual and Cumulative Estimates of the Components of Resident Population Change for the United States, Regions, States, District of Columbia, and Puerto Rico: April 1, 2020 to July 1, 2022 (NST-EST2022-COMP)
Source: U.S. Census Bureau, Population Division
Release Date: December 2022