



**FOR IMMEDIATE RELEASE**

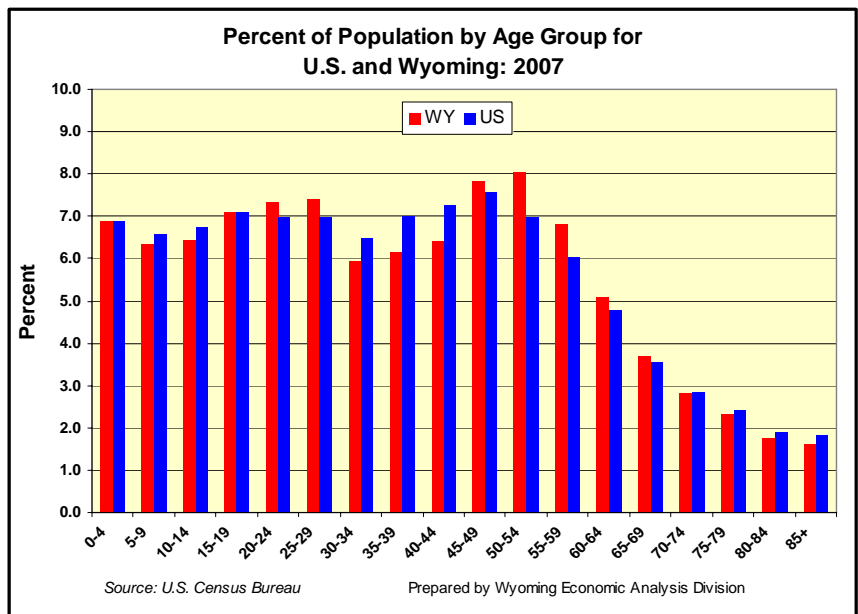
Friday, May 1, 2008

Contact: Wenlin Liu, Ph.D., Senior Economist

## The Changing Face of Wyoming's Population

**CHEYENNE** -- Wyoming's total minority population reached 66,263 in July 2007, according to estimates just released by the U.S. Census Bureau. The increase of minorities since 2000 was 12,630 persons, or 23.7 percent, compared with 5.9 percent overall increase for state's total population. The minority population contributed to over 40 percent of the state's population growth from 2000 to 2007. Hispanic was the largest minority group with 38,409 in July 2007, and it increased 21.3 percent during the seven-year span. All other races, including Black, American Indian, Asian, and mixed races recorded at least double-digit growth, while the majority, Non-Hispanic White, increased only 3.7 percent. With 12.7 percent of the State's total population, the proportion of minorities in Wyoming was still ranked the 9<sup>th</sup> lowest in the nation, while about one in three U.S. residents is a minority.

The U.S. Census Bureau also released the estimates of the 2007 population by age and sex at the state level. "The figures indicate that the aging trend of Wyoming's

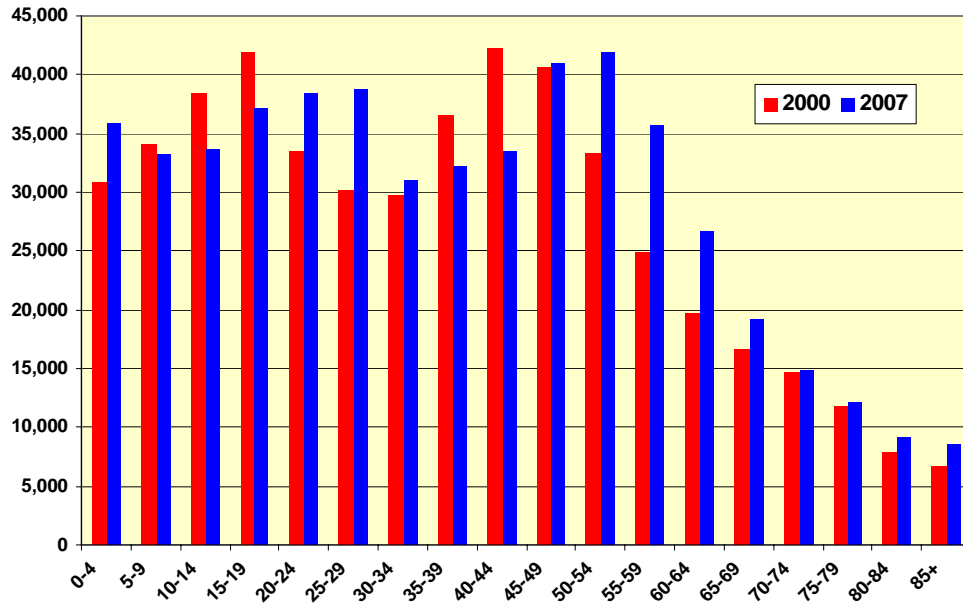


population has been slowing down," said Dr. Wenlin Liu, senior economist with the Economic Analysis Division. The median age (half of the population younger, and half older) increased from 36.2 in 2000 to 37.0 in 2007, at a much slower rate than the U.S. Particularly, it declined in 2007 from the 37.2 in 2006. "This is unusual, but not a surprise because Wyoming's fast development in the energy industry in recent years has been drawing many younger workers and their families into the State. It has also kept many of Wyoming's youth from leaving the State due to the abundant job opportunities," said Dr. Liu. "Movers are much younger than non-movers. Whenever the State experiences an overall positive net migration (more people moved into Wyoming than residents out), the population aging will be lessened. The net in-migration of nearly 7,000 in 2007 was the highest since 1982," Liu continued.

The population under 18 years has increased 2 years in a row, which was the first time in many years. The growth was particularly significant for preschool age children. Many of them are baby boomers' grandchildren. "The number of births in the state has increased tremendously since 2001, at 27.9 percent. The total number of births in 2007, 7,823, was the highest since 1986," said Liu. "However, Wyoming's aging could speed up in the coming years. The proportion of the State's elderly population (65 and over) was 12.2 percent in 2007, still lower than the U.S. level of 12.6 percent, but it grew faster than the national rate. In addition, Wyoming has one of the highest proportions of the early baby boom population, and one of the lowest Generation X percentage in the country. Together with a low migrant and minority population, and the rural nature of the State, Wyoming will continue to face labor force shortages and a potential faster aging population," Dr. Liu said.

Complete population figures are available online, <http://eadiv.state.wy.us/> or the U.S. Census Bureau's website, <http://www.census.gov/>. County age and sex, race and Hispanic data for 2007 will be available in fall 2008.

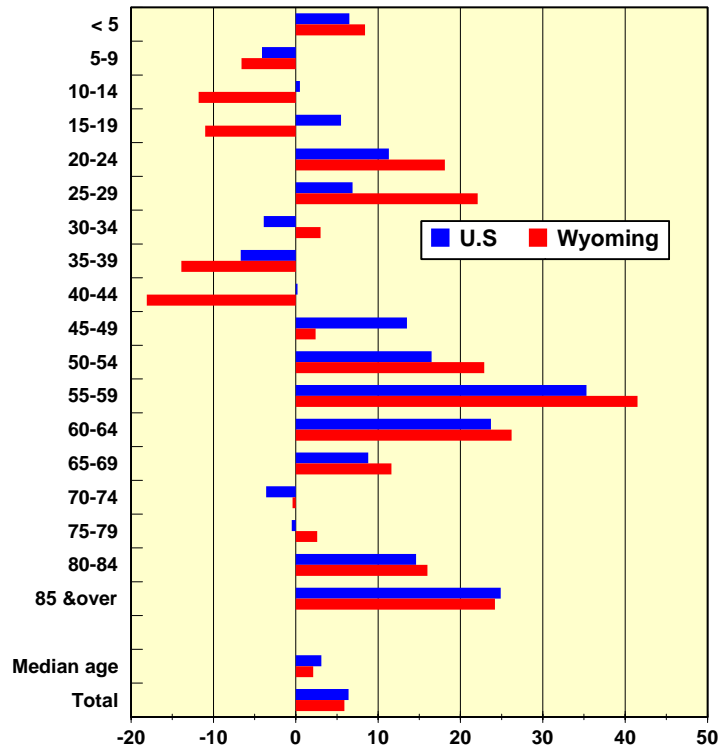
### Population by Age Group for Wyoming: 2000 and 2007



Source: U.S. Census Bureau

Prepared by Wyoming Economic Analysis Division

### Percent Change of Population by Age for U.S. and Wyoming: 2000 to 2007



Source: U.S. Census Bureau

**Annual Estimates of the Population by Sex and Age for Wyoming: April 1, 2000 to July 1, 2007**

Sex and Age	Population Estimates								April 1, 2000	% Change	
	July 1, 2007	July 1, 2006	July 1, 2005	July 1, 2004	July 1, 2003	July 1, 2002	July 1, 2001	July 1, 2000	Census	06_07	00_07
<b>BOTH SEXES</b>	<b>522,830</b>	<b>512,757</b>	<b>506,541</b>	<b>503,258</b>	<b>499,368</b>	<b>497,204</b>	<b>493,032</b>	<b>493,985</b>	<b>493,782</b>	<b>2.0</b>	<b>5.9</b>
Under 5 years	35,890	34,443	33,427	32,774	32,249	31,657	30,905	30,852	30,940	4.2	16.0
5 to 9 years	33,244	32,176	31,730	31,568	31,813	32,288	32,660	33,885	34,127	3.3	-2.6
10 to 14 years	33,646	33,786	34,521	35,513	35,846	36,654	37,373	38,396	38,376	-0.4	-12.3
15 to 19 years	37,129	37,151	37,437	38,076	38,757	39,561	40,724	41,931	41,903	-0.1	-11.4
20 to 24 years	38,400	38,587	38,370	38,508	38,119	37,066	35,142	33,715	33,455	-0.5	14.8
25 to 29 years	38,803	35,836	34,012	32,268	30,280	29,733	29,252	29,851	30,084	8.3	29.0
30 to 34 years	31,016	30,295	30,279	30,301	30,350	30,380	29,685	29,709	29,770	2.4	4.2
35 to 39 years	32,144	31,052	30,476	30,476	31,141	32,558	34,168	36,279	36,482	3.5	-11.9
40 to 44 years	33,482	34,671	36,132	37,793	39,076	40,470	41,518	42,296	42,283	-3.4	-20.8
45 to 49 years	40,967	41,748	42,112	42,483	42,807	42,635	41,574	40,857	40,701	-1.9	0.7
50 to 54 years	41,953	40,773	39,674	38,647	37,332	36,197	35,714	33,620	33,378	2.9	25.7
55 to 59 years	35,656	35,027	32,740	30,801	29,260	27,738	25,597	25,030	24,935	1.8	43.0
60 to 64 years	26,599	24,514	23,909	23,172	22,267	21,145	20,206	19,699	19,655	8.5	35.3
65 to 69 years	19,220	18,409	17,922	17,637	17,217	16,847	16,727	16,584	16,598	4.4	15.8
70 to 74 years	14,831	14,766	14,659	14,608	14,829	14,919	14,800	14,745	14,745	0.4	0.6
75 to 79 years	12,157	12,137	12,151	12,106	11,980	11,878	11,888	11,845	11,808	0.2	3.0
80 to 84 years	9,121	9,068	9,038	8,887	8,619	8,329	8,059	7,878	7,807	0.6	16.8
85 years and over	8,572	8,318	7,952	7,640	7,426	7,149	7,040	6,813	6,735	3.1	27.3
Under 18 years	125,365	122,974	122,141	122,656	123,202	124,828	125,656	128,591	128,873	1.9	-2.7
Under 5 years	35,890	34,443	33,427	32,774	32,249	31,657	30,905	30,852	30,940	4.2	16.0
5 to 13 years	59,793	58,732	58,855	59,557	60,270	61,389	62,107	64,190	64,372	1.8	-7.1
14 to 17 years	29,682	29,799	29,859	30,325	30,683	31,782	32,644	33,549	33,561	-0.4	-11.6
18 to 64 years	333,564	327,085	322,678	319,724	316,095	313,254	308,862	307,529	307,216	2.0	8.6
18 to 24 years	52,944	53,169	53,344	53,783	53,582	52,398	51,148	50,188	49,928	-0.4	6.0
25 to 44 years	135,445	131,854	130,899	130,838	130,847	133,141	134,623	138,135	138,619	2.7	-2.3
45 to 64 years	145,175	142,062	138,435	135,103	131,666	127,715	123,091	119,206	118,669	2.2	22.3
65 years and over	63,901	62,698	61,722	60,878	60,071	59,122	58,514	57,865	57,693	1.9	10.8
16 years and over	412,679	404,844	399,295	395,937	391,930	388,662	384,014	382,333	381,882	1.9	8.1
18 years and over	397,465	389,783	384,400	380,602	376,166	372,376	367,376	365,394	364,909	2.0	8.9
15 to 44 years	210,974	207,592	206,706	207,422	207,723	209,768	210,489	213,781	213,977	1.6	-1.4
Median age (yrs)	37.0	37.2	37.2	37.1	37.1	36.9	36.7	36.3	36.2	-0.4	2.2

**Annual Estimates of the Population by Sex, Race, and Hispanic Origin for Wyoming: April 1, 2000 to July 1, 2007**

Sex, Race, and Hispanic Origin	Population Estimates								4/1/2000 Census	% Change	
	July 1, 2007	July 1, 2006	July 1, 2005	July 1, 2004	July 1, 2003	July 1, 2002	July 1, 2001	July 1, 2000		06_07	00_07
<b>BOTH SEXES</b>	<b>522,830</b>	<b>512,757</b>	<b>506,541</b>	<b>503,258</b>	<b>499,368</b>	<b>497,204</b>	<b>493,032</b>	<b>493,985</b>	<b>493,782</b>	<b>2.0</b>	<b>5.9</b>
One race	515,414	505,776	499,830	496,755	493,018	491,017	487,091	488,181	488,008	1.9	5.6
White	491,880	483,328	478,182	475,591	472,557	471,000	467,724	469,504	469,423	1.8	4.8
Black	6,410	5,875	5,524	5,340	4,915	4,651	4,326	3,959	3,942	9.1	62.6
AIAN	12,899	12,535	12,254	12,104	11,874	11,815	11,649	11,435	11,410	2.9	13.0
Asian	3,795	3,641	3,489	3,354	3,319	3,205	3,045	2,954	2,904	4.2	30.7
NHPI	430	397	381	366	353	346	347	329	329	8.3	30.7
Two or more races	7,416	6,981	6,711	6,503	6,350	6,187	5,941	5,804	5,774	6.2	28.4
<i><b>Race alone or in combination:<sup>1</sup></b></i>											
White	499,030	490,074	484,672	481,868	478,690	476,977	473,463	475,110	474,949	1.8	5.1
Black	8,365	7,628	7,143	6,860	6,356	5,986	5,548	5,102	5,000	9.7	67.3
AIAN	16,687	16,229	15,890	15,728	15,497	15,437	15,225	15,034	15,105	2.8	10.5
Asian	5,602	5,287	5,047	4,830	4,724	4,549	4,300	4,140	4,146	6.0	35.1
NHPI	760	709	683	658	640	627	616	585	634	7.2	19.9
<b>NOT HISPANIC</b>	<b>484,421</b>	<b>476,098</b>	<b>470,942</b>	<b>468,519</b>	<b>465,628</b>	<b>464,161</b>	<b>460,744</b>	<b>462,046</b>	<b>462,113</b>	<b>1.7</b>	<b>4.8</b>
One race	477,818	469,902	464,994	462,754	459,995	458,672	455,474	456,897	456,994	1.7	4.6
White	456,567	449,616	445,440	443,601	441,458	440,526	437,915	439,983	440,152	1.5	3.7
Black	5,485	5,064	4,787	4,665	4,304	4,102	3,846	3,549	3,536	8.3	55.1
AIAN	11,811	11,448	11,158	11,020	10,807	10,735	10,560	10,320	10,300	3.2	14.7
Asian	3,581	3,433	3,284	3,156	3,127	3,016	2,858	2,767	2,728	4.3	31.3
NHPI	374	341	325	312	299	293	295	278	278	9.7	34.5
Two or more races	6,603	6,196	5,948	5,765	5,633	5,489	5,270	5,149	5,119	6.6	29.0
<i><b>Race alone or in combination:<sup>1</sup></b></i>											
White	462,931	455,605	451,193	449,169	446,903	445,835	443,013	444,964	445,062	1.6	4.0
Black	7,206	6,594	6,193	5,983	5,549	5,254	4,896	4,528	4,451	9.3	61.9
AIAN	15,135	14,678	14,341	14,190	13,982	13,903	13,686	13,466	13,537	3.1	11.8
Asian	5,243	4,949	4,716	4,517	4,426	4,262	4,026	3,877	3,855	5.9	36.0
NHPI	690	641	615	595	575	567	559	531	553	7.6	24.8
<b>HISPANIC</b>	<b>38,409</b>	<b>36,659</b>	<b>35,599</b>	<b>34,739</b>	<b>33,740</b>	<b>33,043</b>	<b>32,288</b>	<b>31,939</b>	<b>31,669</b>	<b>4.8</b>	<b>21.3</b>

<sup>1</sup> 'In combination' means in combination with one or more other races. The sum of the five race groups adds to more than the total population because individuals may report more than one race.

Source: Population Division, U.S. Census Bureau

Release Date: May 1, 2008