

FOR IMMEDIATE RELEASE

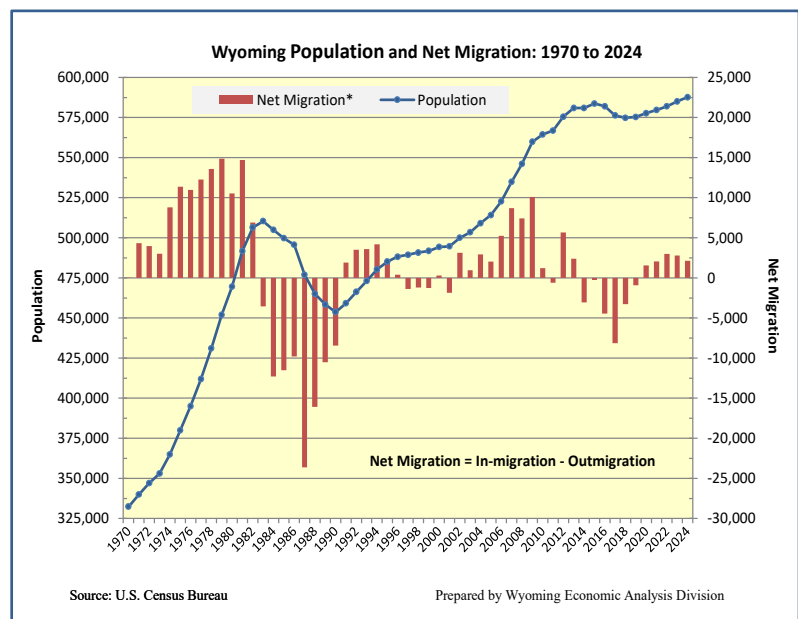
Thursday, December 19, 2024

Contact: Dr. Wenlin Liu, Chief Economist

WYOMING'S POPULATION CONTINUES TO INCREASE AT A MODERATE RATE

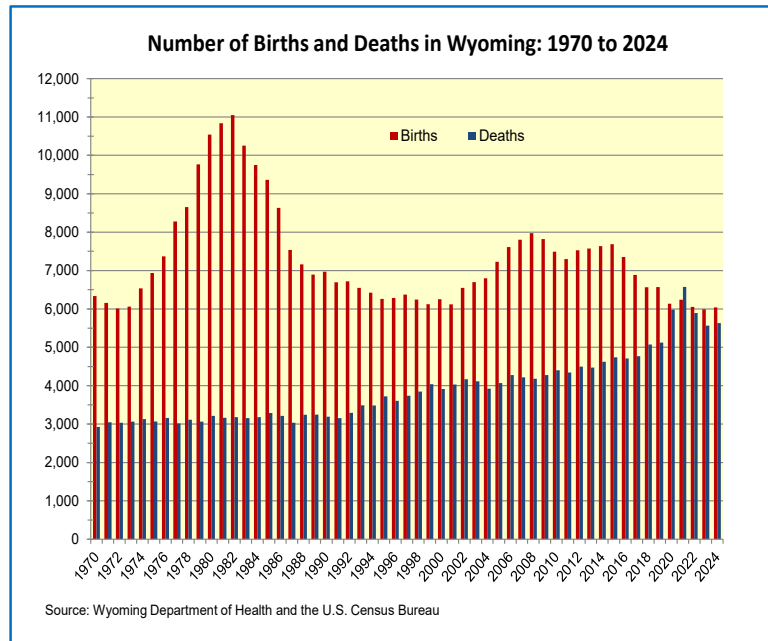
CHEYENNE -- Wyoming's total resident population grew to 587,618 in July 2024, according to estimates just released by the U.S. Census Bureau. The annual increase from July 2023 was 2,551 persons, representing a growth of 0.4 percent. This increase was slightly lower than the 0.5 percent growth recorded in 2023. There are two factors that contribute to population change: natural change from vital events and net migration from people's movement. The natural change, calculated as 6,037 births minus 5,634 deaths, was 403. The estimated net migration - defined as in-migration minus out-migration - was 2,146, indicating that 2,146 more persons moved into Wyoming than moved out of the state between July 2023 and July 2024. In contrast, for the previous two years, net migration was 3,000 and 2,778, respectively.

Nationally, the estimated population was 340.1 million in 2024, reflecting an increase of 1.0 percent from the previous year. This is the fastest annual growth since 2001, primarily driven by rising international migration. The District of Columbia led the nation with a growth rate of 2.2 percent, followed by Florida (2.0%), Texas (1.8%), and Utah (1.8%). Forty seven states and the District of Columbia experienced population increases. However, three states lost population between 2023 and 2024, including Mississippi (-127), Vermont (-215), and West Virginia (-516). All neighboring states experienced a faster population increase than Wyoming, which had the 7th lowest growth rate in the country in 2024. However, with an addition of 10,774 residents (or 1.9 percent), Wyoming ranks as the 26th highest in population growth in the U.S. since the 2020 Census.

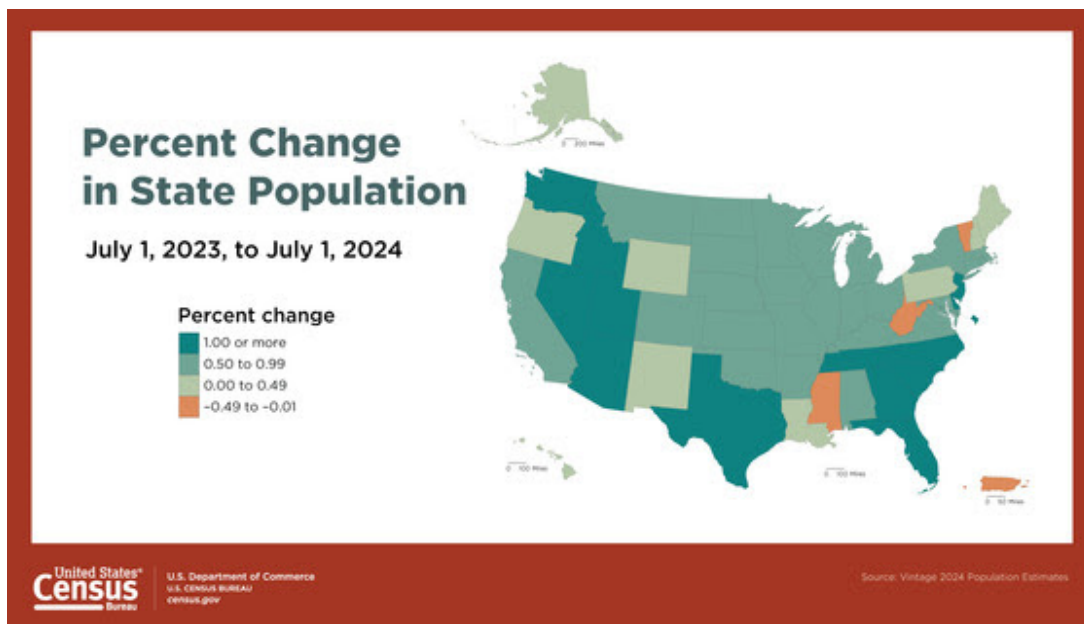


After an unprecedented occurrence, where the number of deaths outnumbered births, during the worst time of the COVID-19 pandemic in 2021, the natural change has since turned positive in Wyoming. “However, due to the continued decline in the fertility rate (the number of births per 1,000 females aged 15-44) and the aging of baby boomers (those born between 1946 and 1964), the contribution to the population from natural increase is much smaller compared to pre-pandemic periods,” according to Dr. Wenlin Liu, Chief Economist with the Economic Analysis Division. The natural change of approximately 400 annually in recent years is only a fraction of the 1,446 in 2019 and 3,015 a decade ago.

The state experienced nearly six consecutive years of negative net migration (more people left than moved into the state) between 2014 and 2019 due to the energy downturn. However, the direction of net migration has since reversed. “Employment opportunities driven by the energy sector have long been a key factor in Wyoming’s migration trends, but the pandemic significantly influenced this dynamic in recent years,” said Dr. Liu. This pandemic-induced migration pattern (relocation from large cities with high costs to less populated, lower-cost areas) has already slowed down across the rest of the country. However, it appears to have continued in Wyoming, albeit at a decelerating rate. Net migration comprises net domestic migration and net international migration. The estimated net domestic migration of 861 in 2024 was less than half of the figure for 2023. Due to the U.S. Census Bureau’s change in methodology, incorporating administrative data on immigrant cases from the U.S. Refugee Admissions Program and the Office of Homeland Security, the estimated net international migration for the state was 1,037 in 2023 and 1,285 in 2024, compared to the annual figure of around 500 before the pandemic.



Similar to the U.S., Wyoming’s economy continued to expand in 2024. As of June 2024, Wyoming’s unemployment rate was 2.9 percent, the lowest since the summer of 2008, and it was much lower than the U.S. average of 4.1 percent. Despite a moderate decrease in the mining industry, the state’s total employment in June was 0.9 percent higher than the previous year, thanks to robust growth in the construction industry and a rebound in the job market for federal, state, and local government sectors, including higher education, public K-12 education, and public hospitals.



The complete figures and methodology are available on the U.S. Census Bureau’s website at <http://www.census.gov/>

Table 1. Annual Estimates of the Resident Population for the United States, Regions, States, District of Columbia: April 1, 2020 to July 1, 2024

Geographic Area	April 1, 2020 Estimates Base	Population Estimate (as of July 1)				
		2020	2021	2022	2023	2024
United States	331,515,736	331,577,720	332,099,760	334,017,321	336,806,231	340,110,988
Northeast	57,617,706	57,431,458	57,252,533	57,159,597	57,398,303	57,832,935
Midwest	68,998,970	68,984,258	68,872,831	68,903,297	69,186,401	69,596,584
South	126,281,537	126,476,549	127,368,010	129,037,849	130,893,358	132,665,693
West	78,617,523	78,685,455	78,606,386	78,916,578	79,328,169	80,015,776
Alabama	5,025,369	5,033,094	5,049,196	5,076,181	5,117,673	5,157,699
Alaska	733,395	733,017	734,420	734,442	736,510	740,133
Arizona	7,158,110	7,187,135	7,274,078	7,377,566	7,473,027	7,582,384
Arkansas	3,011,553	3,014,546	3,026,870	3,047,704	3,069,463	3,088,354
California	39,555,674	39,521,958	39,142,565	39,142,414	39,198,693	39,431,263
Colorado	5,775,324	5,787,129	5,814,036	5,850,935	5,901,339	5,957,493
Connecticut	3,607,701	3,579,918	3,606,607	3,617,925	3,643,023	3,675,069
Delaware	989,955	991,928	1,005,062	1,020,625	1,036,423	1,051,917
District of Columbia	689,545	670,917	669,256	676,725	687,324	702,250
Florida	21,538,192	21,592,035	21,831,949	22,379,312	22,904,868	23,372,215
Georgia	10,713,755	10,732,888	10,792,060	10,931,805	11,064,432	11,180,878
Hawaii	1,455,252	1,451,252	1,447,029	1,440,359	1,441,387	1,446,146
Idaho	1,839,140	1,849,415	1,904,848	1,944,299	1,971,122	2,001,619
Illinois	12,821,814	12,799,088	12,700,641	12,621,821	12,642,259	12,710,158
Indiana	6,786,587	6,790,497	6,815,907	6,844,545	6,880,131	6,924,275
Iowa	3,190,546	3,191,141	3,198,613	3,202,820	3,218,414	3,241,488
Kansas	2,937,745	2,938,172	2,938,338	2,937,324	2,951,500	2,970,606
Kentucky	4,506,302	4,508,318	4,507,583	4,519,233	4,550,595	4,588,372
Louisiana	4,657,874	4,652,301	4,627,971	4,593,687	4,588,071	4,597,740
Maine	1,363,196	1,364,571	1,378,931	1,390,922	1,399,646	1,405,012
Maryland	6,181,629	6,177,935	6,179,403	6,192,440	6,217,062	6,263,220
Massachusetts	7,033,132	6,994,598	7,000,474	7,022,468	7,066,568	7,136,171
Michigan	10,079,338	10,072,703	10,041,351	10,050,877	10,083,356	10,140,459
Minnesota	5,706,692	5,710,735	5,718,660	5,721,621	5,753,048	5,793,151
Mississippi	2,961,278	2,958,536	2,947,209	2,941,939	2,943,172	2,943,045
Missouri	6,154,854	6,154,744	6,171,374	6,179,414	6,208,038	6,245,466
Montana	1,084,216	1,087,230	1,106,522	1,122,095	1,131,302	1,137,233
Nebraska	1,961,996	1,963,387	1,964,537	1,972,246	1,987,864	2,005,465
Nevada	3,105,595	3,116,967	3,148,141	3,176,116	3,214,363	3,267,467
New Hampshire	1,377,546	1,378,756	1,387,677	1,396,678	1,402,199	1,409,032
New Jersey	9,289,014	9,272,794	9,270,541	9,295,227	9,379,642	9,500,851
New Mexico	2,117,555	2,118,606	2,117,333	2,113,868	2,121,164	2,130,256
New York	20,203,772	20,105,171	19,848,276	19,703,747	19,737,367	19,867,248
North Carolina	10,441,499	10,449,652	10,564,320	10,710,793	10,881,189	11,046,024
North Dakota	779,046	779,563	777,966	781,057	789,047	796,568
Ohio	11,799,453	11,798,905	11,767,344	11,777,874	11,824,034	11,883,304
Oklahoma	3,959,405	3,965,415	3,992,238	4,026,229	4,063,882	4,095,393
Oregon	4,237,224	4,243,779	4,254,280	4,247,372	4,253,653	4,272,371
Pennsylvania	13,002,909	12,996,143	13,015,571	12,984,990	13,017,721	13,078,751
Rhode Island	1,097,354	1,096,530	1,097,246	1,099,498	1,103,429	1,112,308
South Carolina	5,118,252	5,132,249	5,194,274	5,287,935	5,387,830	5,478,831
South Dakota	886,729	887,948	896,492	909,723	918,305	924,669
Tennessee	6,912,347	6,927,904	6,965,740	7,062,217	7,148,304	7,227,750
Texas	29,149,458	29,239,570	29,570,351	30,113,488	30,727,890	31,290,831
Utah	3,271,608	3,284,077	3,339,738	3,391,011	3,443,222	3,503,613
Vermont	643,082	642,977	647,210	648,142	648,708	648,493
Virginia	8,631,388	8,637,615	8,658,910	8,683,414	8,734,685	8,811,195
Washington	7,707,586	7,727,209	7,743,760	7,794,123	7,857,320	7,958,180
West Virginia	1,793,736	1,791,646	1,785,618	1,774,122	1,770,495	1,769,979
Wisconsin	5,894,170	5,897,375	5,881,608	5,903,975	5,930,405	5,960,975
Wyoming	576,844	577,681	579,636	581,978	585,067	587,618

The Census Bureau has reviewed this data product to ensure appropriate access, use, and disclosure avoidance protection of the confidential source data used to produce this product (Data Management System (DMS) number: P-6000042 and P-7501659. Disclosure Review Board (DRB) approval number: CBDRB-FY25-0078).

Note: The estimates are developed from a base that integrates the 2020 Census, Vintage 2020 estimates, and (for the U.S. only) 2020 Demographic Analysis estimates. For population estimates methodology statements, see <https://www.census.gov/programs-surveys/popest/technical-documentation/methodology.html>. See Geographic Terms and Definitions at <https://www.census.gov/programs-surveys/popest/guidance-geographies/terms-and-definitions.html> for a list of the states that are included in each region. All geographic boundaries for the 2024 population estimates series are as of January 1, 2024.

Table 2. Annual and Cumulative Estimates of Resident Population Change for the United States, Regions, States, District of Columbia and Region and State Rankings: April 1, 2020 to July 1, 2024

Geographic Area	Change, July 1, 2023 to July 1, 2024		Change, April 1, 2020 to July 1, 2024		National Ranking of Regions and States			
	Number	Percent	Number	Percent	Change, July 1, 2023 to July 1, 2024		Change, April 1, 2020 to July 1, 2024	
					Number	Percent	Number	Percent
United States	3,304,757	1.0	8,595,252	2.6	(X)	(X)	(X)	(X)
Northeast	434,632	0.8	215,229	0.4	3	3	4	4
Midwest	410,183	0.6	597,614	0.9	4	4	3	3
South	1,772,335	1.4	6,384,156	5.1	1	1	1	1
West	687,607	0.9	1,398,253	1.8	2	2	2	2
Alabama	40,026	0.8	132,330	2.6	24	23	17	18
Alaska	3,623	0.5	6,738	0.9	47	40	43	38
Arizona	109,357	1.5	424,274	5.9	8	10	5	7
Arkansas	18,891	0.6	76,801	2.6	33	32	24	19
California	232,570	0.6	-124,411	-0.3	3	34	50	45
Colorado	56,154	1.0	182,169	3.2	19	17	11	16
Connecticut	32,046	0.9	67,368	1.9	27	19	26	27
Delaware	15,494	1.5	61,962	6.3	36	9	28	6
District of Columbia	14,926	2.2	12,705	1.8	37	1	40	28
Florida	467,347	2.0	1,834,023	8.5	2	2	2	2
Georgia	116,446	1.1	467,123	4.4	7	14	4	12
Hawaii	4,759	0.3	-9,106	-0.6	46	47	45	47
Idaho	30,497	1.5	162,479	8.8	30	7	13	1
Illinois	67,899	0.5	-111,656	-0.9	14	36	49	48
Indiana	44,144	0.6	137,688	2.0	22	31	15	25
Iowa	23,074	0.7	50,942	1.6	31	26	31	30
Kansas	19,106	0.6	32,861	1.1	32	30	36	37
Kentucky	37,777	0.8	82,070	1.8	25	21	22	29
Louisiana	9,669	0.2	-60,134	-1.3	38	48	48	49
Maine	5,366	0.4	41,816	3.1	45	46	33	17
Maryland	46,158	0.7	81,591	1.3	21	25	23	35
Massachusetts	69,603	1.0	103,039	1.5	13	15	18	33
Michigan	57,103	0.6	61,121	0.6	18	35	29	42
Minnesota	40,103	0.7	86,459	1.5	23	27	20	31
Mississippi	-127	-	-18,233	-0.6	49	49	46	46
Missouri	37,428	0.6	90,612	1.5	26	33	19	32
Montana	5,931	0.5	53,017	4.9	44	37	30	10
Nebraska	17,601	0.9	43,469	2.2	35	18	32	23
Nevada	53,104	1.7	161,872	5.2	20	6	14	9
New Hampshire	6,833	0.5	31,486	2.3	42	41	37	20
New Jersey	121,209	1.3	211,837	2.3	6	11	10	21
New Mexico	9,092	0.4	12,701	0.6	39	45	41	43
New York	129,881	0.7	-336,524	-1.7	5	29	51	51
North Carolina	164,835	1.5	604,525	5.8	4	8	3	8
North Dakota	7,521	1.0	17,522	2.2	41	16	38	22
Ohio	59,270	0.5	83,851	0.7	17	39	21	41
Oklahoma	31,511	0.8	135,988	3.4	28	24	16	14
Oregon	18,718	0.4	35,147	0.8	34	43	35	40
Pennsylvania	61,030	0.5	75,842	0.6	15	42	25	44
Rhode Island	8,879	0.8	14,954	1.4	40	22	39	34
South Carolina	91,001	1.7	360,579	7.0	10	5	6	5
South Dakota	6,364	0.7	37,940	4.3	43	28	34	13
Tennessee	79,446	1.1	315,403	4.6	11	13	7	11
Texas	562,941	1.8	2,141,373	7.3	1	3	1	3
Utah	60,391	1.8	232,005	7.1	16	4	9	4
Vermont	-215	-	5,411	0.8	50	51	44	39
Virginia	76,510	0.9	179,807	2.1	12	20	12	24
Washington	100,860	1.3	250,594	3.3	9	12	8	15
West Virginia	-516	-	-23,757	-1.3	51	50	47	50
Wisconsin	30,570	0.5	66,805	1.1	29	38	27	36
Wyoming	2,551	0.4	10,774	1.9	48	44	42	26

Dash (-) represents zero or rounds to zero.

(X) Not applicable.

The Census Bureau has reviewed this data product to ensure appropriate access, use, and disclosure avoidance protection of the confidential source data used to produce this product (Data Management System (DMS) number: P-6000042 and P-7501659. Disclosure Review Board (DRB) approval number: CBDRB-FY25-0078).

Note: The estimates are developed from a base that integrates the 2020 Census, Vintage 2020 estimates, and (for the U.S. only) 2020 Demographic Analysis estimates. For population estimates methodology statements, see <https://www.census.gov/programs-surveys/popest/technical-documentation/methodology.html>. See Geographic Terms and Definitions at <https://www.census.gov/programs-surveys/popest/guidance-geographies/terms-and-definitions.html> for a list of the states that are included in each region. All geographic boundaries for the 2024 population estimates series are as of January 1, 2024.

Table 3. Annual and Cumulative Estimates of the Components of Resident Population Change for the United States, Regions, States, and District of Columbia: July 1, 2023 to July 1, 2024

Geographic Area	Annual Change, July 1, 2023 to July 1, 2024						
	Total Population Change ¹	Vital Events			Net Migration		
		Natural Change	Births	Deaths	Total	International ²	Domestic
United States	3,304,757	518,638	3,605,563	3,086,925	2,786,119	2,786,119	(X)
Northeast	434,632	59,344	574,868	515,524	375,311	567,420	-192,109
Midwest	410,183	52,741	735,023	682,282	357,523	406,737	-49,214
South	1,772,335	218,567	1,471,082	1,252,515	1,555,172	1,144,168	411,004
West	687,607	187,986	824,590	636,604	498,113	667,794	-169,681
Alabama	40,026	-1,732	57,541	59,273	41,791	15,763	26,028
Alaska	3,623	3,372	9,014	5,642	255	4,029	-3,774
Arizona	109,357	9,660	78,322	68,662	99,388	64,486	34,902
Arkansas	18,891	-727	35,161	35,888	19,617	6,152	13,465
California	232,570	110,466	400,601	290,135	121,482	361,057	-239,575
Colorado	56,154	17,294	62,497	45,203	38,649	33,227	5,422
Connecticut	32,046	1,831	34,609	32,778	30,154	36,214	-6,060
Delaware	15,494	-21	10,437	10,458	15,438	7,283	8,155
District of Columbia	14,926	2,761	7,746	4,985	12,165	12,502	-337
Florida	467,347	-7,321	220,659	227,980	475,339	411,322	64,017
Georgia	116,446	28,252	125,502	97,250	88,409	63,088	25,321
Hawaii	4,759	2,271	14,682	12,411	2,572	11,893	-9,321
Idaho	30,497	6,195	22,830	16,635	24,282	7,899	16,383
Illinois	67,899	11,012	125,355	114,343	56,720	112,955	-56,235
Indiana	44,144	9,159	79,422	70,263	35,120	30,852	4,268
Iowa	23,074	3,829	36,301	32,472	19,208	19,439	-231
Kansas	19,106	5,232	33,963	28,731	13,829	18,530	-4,701
Kentucky	37,777	-892	52,248	53,140	38,724	31,430	7,294
Louisiana	9,669	3,959	53,787	49,828	5,737	23,142	-17,405
Maine	5,366	-5,157	11,609	16,766	10,525	5,196	5,329
Maryland	46,158	11,604	65,609	54,005	34,591	53,100	-18,509
Massachusetts	69,603	6,718	67,851	61,133	62,737	90,217	-27,480
Michigan	57,103	-2,855	99,589	102,444	59,952	67,608	-7,656
Minnesota	40,103	11,780	61,438	49,658	28,379	29,540	-1,161
Mississippi	-127	-1,984	33,859	35,843	1,850	6,789	-4,939
Missouri	37,428	1,521	67,589	66,068	35,858	23,569	12,289
Montana	5,931	12	11,268	11,256	5,916	506	5,410
Nebraska	17,601	6,135	24,443	18,308	11,480	12,978	-1,498
Nevada	53,104	3,058	31,951	28,893	49,858	33,005	16,853
New Hampshire	6,833	-2,363	11,777	14,140	9,179	4,290	4,889
New Jersey	121,209	26,010	101,199	75,189	95,138	130,692	-35,554
New Mexico	9,092	-1,437	20,833	22,270	10,532	12,103	-1,571
New York	129,881	43,701	205,289	161,588	86,244	207,161	-120,917
North Carolina	164,835	12,632	121,281	108,649	152,080	69,792	82,288
North Dakota	7,521	2,725	9,592	6,867	4,835	5,126	-291
Ohio	59,270	-425	126,575	127,000	59,916	62,378	-2,462
Oklahoma	31,511	3,136	47,642	44,506	28,394	14,358	14,036
Oregon	18,718	-3,731	38,788	42,519	22,428	23,590	-1,162
Pennsylvania	61,030	-9,311	127,571	136,882	70,601	82,101	-11,500
Rhode Island	8,879	-362	9,924	10,286	9,220	9,525	-305
South Carolina	91,001	-517	57,999	58,516	91,277	23,234	68,043
South Dakota	6,364	2,588	11,311	8,723	3,748	1,616	2,132
Tennessee	79,446	3,358	83,223	79,865	76,124	27,648	48,476
Texas	562,941	158,753	388,115	229,362	404,836	319,569	85,267
Utah	60,391	23,986	45,695	21,709	36,353	33,133	3,220
Vermont	-215	-1,723	5,039	6,762	1,513	2,024	-511
Virginia	76,510	15,150	93,593	78,443	61,439	56,155	5,284
Washington	100,860	16,437	82,072	65,635	84,252	81,581	2,671
West Virginia	-516	-7,844	16,680	24,524	7,361	2,841	4,520
Wisconsin	30,570	2,040	59,445	57,405	28,478	22,146	6,332
Wyoming	2,551	403	6,037	5,634	2,146	1,285	861

(X) Not applicable.

¹ Total population change includes a residual. This residual represents the change in population that cannot be attributed to any specific demographic component. See Population Estimates Terms and Definitions at <https://www.census.gov/programs-surveys/popest/about/glossary.html>.

² Net international migration for the United States includes the international migration of both U.S.-born and non-U.S.-born populations. Specifically, it includes: (a) the net international migration of the non-U.S. born, (b) the net migration of U.S. born to and from the United States, (c) the net migration between the United States and Puerto Rico, and (d) the net movement of the Armed Forces population between the United States and overseas.

Table 4. Annual and Cumulative Estimates of the Components of Resident Population Change for the United States, Regions, States, and District of Columbia: April 1, 2020 to July 1, 2024

Geographic Area	Cumulative Change, April 1, 2020 to July 1, 2024						
	Total Population Change ¹	Vital Events			Net Migration		
		Natural Change	Births	Deaths	Total	International ²	Domestic
United States	8,595,252	1,425,410	15,413,421	13,988,011	7,169,842	7,169,842	(X)
Northeast	215,229	101,205	2,462,910	2,361,705	134,818	1,453,393	-1,318,575
Midwest	597,614	69,901	3,172,662	3,102,761	515,967	1,044,568	-528,601
South	6,384,156	558,943	6,214,328	5,655,385	5,802,546	2,986,619	2,815,927
West	1,398,253	695,361	3,563,521	2,868,160	716,511	1,685,262	-968,751
Alabama	132,330	-25,635	245,223	270,858	157,982	38,850	119,132
Alaska	6,738	15,236	39,365	24,129	-8,388	11,176	-19,564
Arizona	424,274	12,430	329,945	317,515	411,586	158,932	252,654
Arkansas	76,801	-11,169	150,011	161,180	87,377	18,737	68,640
California	-124,411	418,245	1,750,689	1,332,444	-530,886	934,230	-1,465,116
Colorado	182,169	66,761	265,196	198,435	114,234	83,062	31,172
Connecticut	67,368	604	147,768	147,164	70,954	95,160	-24,206
Delaware	61,962	-2,324	44,757	47,081	64,105	17,748	46,357
District of Columbia	12,705	11,534	35,004	23,470	5,309	34,639	-29,330
Florida	1,834,023	-102,012	924,877	1,026,889	1,931,865	1,059,143	872,722
Georgia	467,123	88,224	528,366	440,142	376,362	170,551	205,811
Hawaii	-9,106	11,260	65,030	53,770	-20,019	30,735	-50,754
Idaho	162,479	21,753	94,865	73,112	142,379	22,029	120,350
Illinois	-111,656	25,566	547,493	521,927	-139,399	278,657	-418,056
Indiana	137,688	17,793	336,851	319,058	118,821	88,582	30,239
Iowa	50,942	10,095	154,592	144,497	40,311	49,793	-9,482
Kansas	32,861	13,891	145,738	131,847	18,215	42,138	-23,923
Kentucky	82,070	-18,961	220,996	239,957	99,395	70,614	28,781
Louisiana	-60,134	8,964	237,446	228,482	-70,376	59,112	-129,488
Maine	41,816	-21,464	50,174	71,638	62,932	13,800	49,132
Maryland	81,591	45,443	286,867	241,424	33,748	154,183	-120,435
Massachusetts	103,039	18,267	288,507	270,240	92,351	255,102	-162,751
Michigan	61,121	-38,340	434,392	472,732	96,680	164,465	-67,785
Minnesota	86,459	51,570	268,689	217,119	33,161	81,091	-47,930
Mississippi	-18,233	-16,175	147,355	163,530	-2,185	19,968	-22,153
Missouri	90,612	-11,261	291,015	302,276	101,152	58,918	42,234
Montana	53,017	-3,064	47,127	50,191	56,118	2,622	53,496
Nebraska	43,469	23,681	103,759	80,078	19,573	33,331	-13,758
Nevada	161,872	8,676	139,811	131,135	152,874	71,488	81,386
New Hampshire	31,486	-9,215	51,191	60,406	40,108	10,938	29,170
New Jersey	211,837	75,989	429,061	353,072	134,979	327,188	-192,209
New Mexico	12,701	-9,695	90,605	100,300	22,141	30,125	-7,984
New York	-336,524	124,970	879,560	754,590	-446,814	519,395	-966,209
North Carolina	604,525	32,377	509,514	477,137	573,272	181,262	392,010
North Dakota	17,522	11,086	41,697	30,611	6,715	13,165	-6,450
Ohio	83,851	-43,641	544,840	588,481	126,256	164,274	-38,018
Oklahoma	135,988	1,036	203,636	202,600	134,029	40,811	93,218
Oregon	35,147	-15,977	168,013	183,990	51,210	53,080	-1,870
Pennsylvania	75,842	-77,549	551,644	629,193	149,870	198,901	-49,031
Rhode Island	14,954	-3,605	43,009	46,614	18,240	26,871	-8,631
South Carolina	360,579	-18,048	243,071	261,119	375,644	60,691	314,953
South Dakota	37,940	9,387	47,632	38,245	28,035	6,665	21,370
Tennessee	315,403	-13,858	347,135	360,993	325,319	73,139	252,180
Texas	2,141,373	567,553	1,616,619	1,049,066	1,568,491	820,761	747,730
Utah	232,005	101,823	194,989	93,166	129,795	77,904	51,891
Vermont	5,411	-6,792	21,996	28,788	12,198	6,038	6,160
Virginia	179,807	53,818	401,496	347,678	124,316	158,813	-34,497
Washington	250,594	67,473	351,922	284,449	185,134	206,851	-21,717
West Virginia	-23,757	-41,824	71,955	113,779	17,893	7,597	10,296
Wisconsin	66,805	74	255,964	255,890	66,447	63,489	2,958
Wyoming	10,774	440	25,964	25,524	10,333	3,028	7,305

(X) Not applicable.

¹ Total population change includes a residual. This residual represents the change in population that cannot be attributed to any specific demographic component. See Population Estimates Terms and Definitions at <https://www.census.gov/programs-surveys/popest/about/glossary.html>.

² Net international migration for the United States includes the international migration of both U.S.-born and non-U.S.-born populations. Specifically, it includes: (a) the net international migration of the non-U.S. born, (b) the net migration of U.S. born to and from the United States, (c) the net migration between the United States and Puerto Rico, and (d) the net movement of the Armed Forces population between the United States and overseas.

Source: U.S. Census Bureau, Population Division

Release Date: December 2024