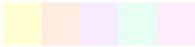
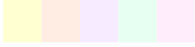
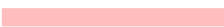
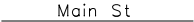

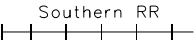











CENSUS TRACT OUTLINE MAP LEGEND (CENSUS 2000)

<u>SYMBOL DESCRIPTION</u>	<u>SYMBOL</u>	<u>NAME STYLE</u>
International	☆☆☆☆☆☆	CANADA
American Indian Reservation (Federal)	☆☆☆☆☆☆	L'ANSE RES (1880)
Off-Reservation Trust Land, Hawaiian Home Land	☆☆☆☆☆☆	T1880
Oklahoma Tribal Statistical Area, Alaska Native Village Statistical Area, Tribal Designated Statistical Area	◆◆◆◆◆◆◆	KAW OTSA (5340)
American Indian Tribal Subdivision	◆◆◆◆◆◆◆	SHONTO (620)
American Indian Reservation (State)	// // // // // //	Tama Res (4125)
State Designated American Indian Statistical Area	◇◇◇◇◇◇◇	Lumbee (9815)
Alaska Native Regional Corporation	▽ ▲ ▽ ▲ ▽ ▲ ▽	NANA ANRC 52120
State or Statistically Equivalent Entity	// // // // // //	NEW YORK 36
County or Statistically Equivalent Entity	■ ■ ■ ■ ■ ■ ■	ERIE 029
Minor Civil Division (MCD) ¹	◡ ◡ ◡ ◡ ◡ ◡ ◡	PIKE TWP 59742
Census County Division (CCD)	◡ ◡ ◡ ◡ ◡ ◡ ◡	KULA CCD 91890
Consolidated City	○ ○ ○ ○ ○ ○ ○	Milford 47500
Incorporated Place ¹		Rome 63418
Census Designated Place (CDP) ¹		Zena 84187
Census Tract		5702.01

<u>FEATURE</u>	<u>SYMBOL</u>	<u>FEATURE</u>	<u>SYMBOL</u>
All Roads	 Main St	Perennial Stream or Shoreline	 Tumbling Cr
Railroad	 Southern RR	Intermittent Stream or Shoreline	 Piney Cr
Pipeline or Power Line		Large River or Lake	 Pleasant Lake
Ridge, Fence, or Other Physical Feature		Glacier	 Bering Glacier
Nonvisible Boundary or Feature Not Elsewhere Classified		Military Installation	 Fort Belvoir
Inset Area	 A	Outside Subject Area	

Where international, state, and/or county boundaries coincide, the map shows the boundary symbol for only the highest-ranking of these boundaries.

¹ A ' * ' following a place name indicates that the place is coextensive with a MCD. A ' ° ' following an incorporated place name indicates that the place is also a false MCD. In both cases, the MCD name is shown only when it differs from the place name.

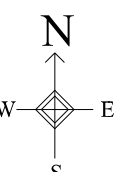
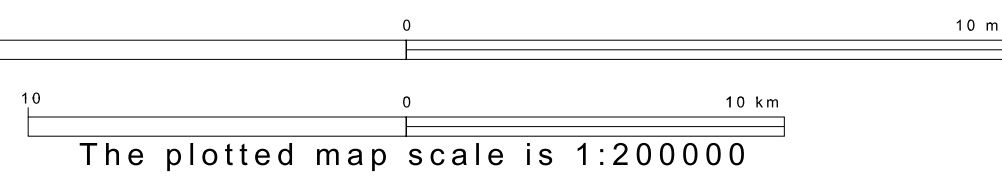
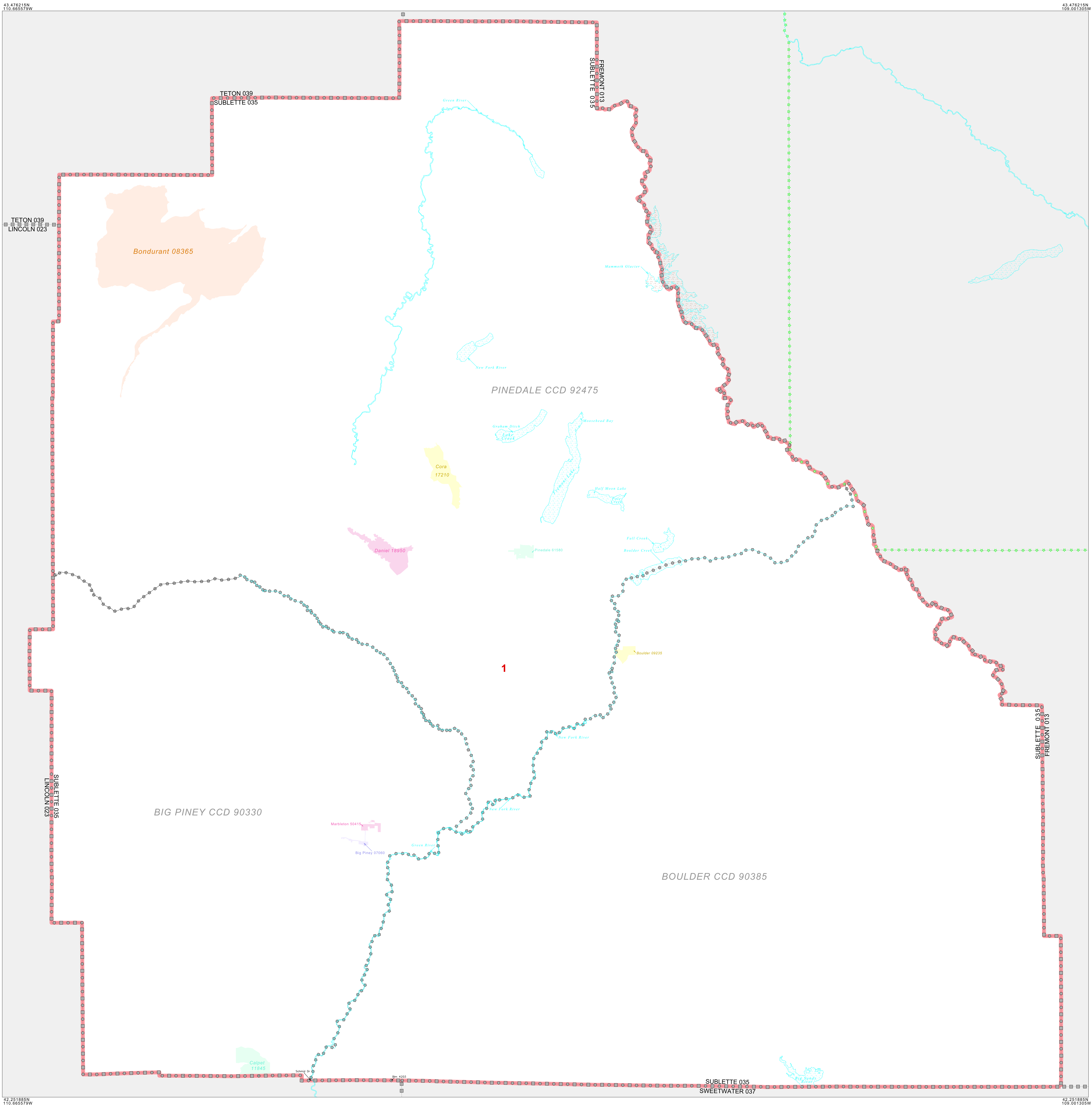
CENSUS TRACT OUTLINE MAP (CENSUS 2000)

ABBREVIATED LEGEND	
SYMBOL	NAME STYLE
*****	INTERNATIONAL
*****	AIR (FEDERAL)
*****	Trust Land
*****	OTSA / TDSA
*****	TRIBAL SUBDIVISION
*****	AIR (State)
*****	SDA/SA
#####	STATE
#####	COUNTY
#####	CENSUS COUNTY DIV.
#####	Consolidated City
#####	Incorporated Place
#####	Census Designated Place
#####	Census Tract

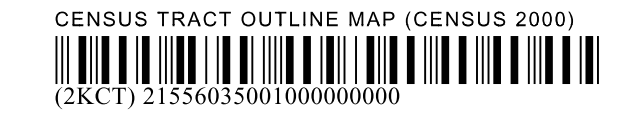
FEATURES	
All Roads	Stream/Shoreline
Epiroad	Intermittent Stream
Flow/Power Line	River/Lake
Physical Feature	Glacier
Navigable Boundary	
Military	

Inset Out Area

Abbreviation Reference: AIR = American Indian Reservation; Trust Land = Off-Reservation Trust Land; OTSA = Oklahoma Tribal Statistical Area; TDSA = Tribal Designated Statistical Area; Tribal Subdivision = American Indian Tribal Subdivision; SDA/SA = State Designated American Indian Statistical Area



ST: Wyoming (56)
 COU: Sublette (035)
 SHEET 1 OF 1 PARENT SHEET



All legal boundaries and names are as of January 1, 2000. The boundaries shown on this map are for Census Bureau statistical data collection and tabulation purposes only; their depiction and designation for statistical purposes does not constitute a determination of jurisdictional authority or rights of ownership or entitlement. U.S. DEPARTMENT OF COMMERCE Economics and Statistics Administration U.S. Census Bureau