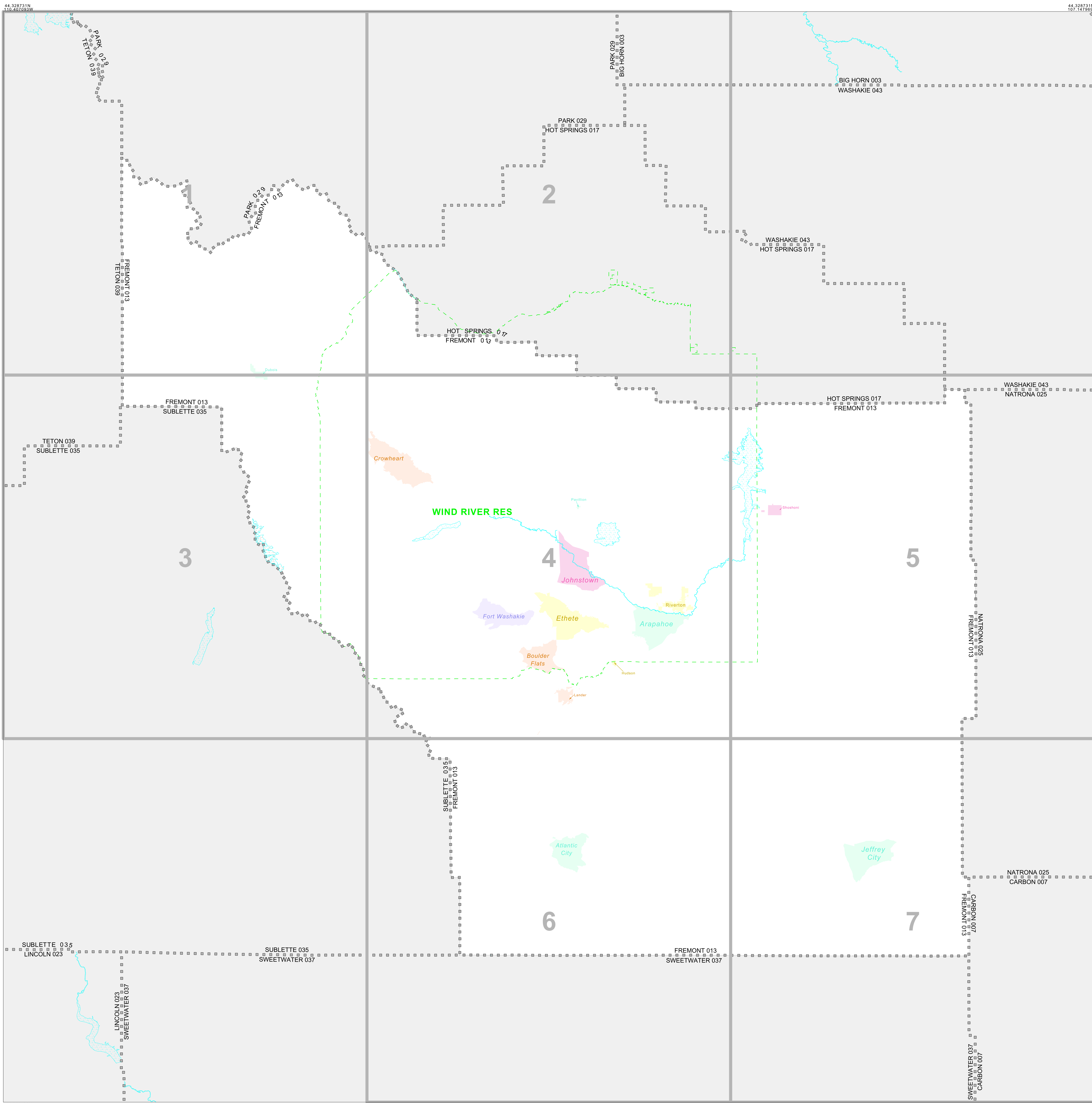


INDEX FOR CENSUS TRACT OUTLINE MAP (CENSUS 2000)



INDEX MAP LEGEND

SYMBOL	NAME STYLE
*****	INTERNATIONAL
-----	AIR (FEDERAL)
-----	Trust Land/HLL
-----	OTSA/ANVSA/TDSA
-----	TRIBAL SUBDIVISION
-----	AIR (State)
-----	SDA/SA
-----	ANRC
-----	STATE
-----	COUNTY
-----	MINOR CIVIL DIV.¹
-----	Consolidated City
-----	Incorporated Place¹
-----	Census Designated Place¹

Inset Out Area

Abbreviation Reference: AIR = American Indian Reservation; Trust Land = OTL; Reservation Trust Land; ANRC = Alaska Native Regional Corporation; OTSA = Tribal Designated Statistical Area; Tribal Subdivision = American Indian Tribal Subdivision; SDA/SA = State Designated American Indian Statistical Area; ANRC = Alaska Native Regional Corporation

¹ A ** following a place name indicates that the place is coterminous with a MCD. A * indicates that the place is also a false MCD. In both cases, the MCD name is shown only when it differs from the place name.

CENSUS TRACT OUTLINE MAP LEGEND (CENSUS 2000)

SYMBOL DESCRIPTION	SYMBOL	NAME STYLE
International	*****	CANADA
American Indian Reservation (Federal)	*****	L'ANSE RES (1880)
Off-Reservation Trust Land, Hawaiian Home Land	*****	T1880
Oklahoma Tribal Statistical Area, Alaska Native Village Statistical Area, Tribal Designated Statistical Area	*****	KAW OTSA (5340)
American Indian Tribal Subdivision	*****	SHONTO (620)
American Indian Reservation (State)	*****	Tama Res (4125)
State Designated American Indian Statistical Area	*****	Lumbee (9815)
Alaska Native Regional Corporation	*****	NANA ANRC 52120
State or Statistically Equivalent Entity	*****	NEW YORK 36
County or Statistically Equivalent Entity	*****	ERIE 029
Minor Civil Division (MCD)¹	*****	PIKE TWP 59742
Census County Division (CCD)	*****	KULA CCD 91890
Consolidated City	*****	Milford 47500
Incorporated Place¹	*****	Rome 63418
Census Designated Place (CDP)¹	*****	Zena 84187
Census Tract	*****	5702.01

FEATURE	SYMBOL	FEATURE	SYMBOL
All Roads	Main St	Perennial Stream of Shoreline	Tumling Cr.
Railroad	Southern RR	Intermittent Stream or Shoreline	Alone Cr.
Pipeline or Power Line		Large River or Lake	Picant Lake
Ridge, Fence, or Other Physical Feature		Glacier	Bornic Glacier
Nonvisible Boundary or Feature Not Elsewhere Classified		Military Installation	Fort Belvoir
Inset Area	A	Outside Subject Area	

Where international, state, and/or county boundaries coincide, the map shows the boundary symbol for only the highest-ranking of these boundaries.

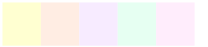
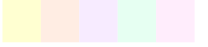
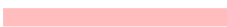
¹ A ** following a place name indicates that the place is coterminous with a MCD. A * following an incorporated place name indicates that the place is also a false MCD. In both cases, the MCD name is shown only when it differs from the place name.

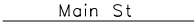

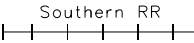









All legal boundaries and names are as of January 1, 2000. The boundaries shown on this map are for Census Bureau statistical data collection and tabulation purposes only; their depiction and designation for statistical purposes does not constitute a determination of jurisdictional authority or rights of ownership or entitlement. U.S. DEPARTMENT OF COMMERCE Economics and Statistics Administration U.S. Census Bureau

ST: Wyoming (56)
 COU: Fremont (013)
 INDEX MAP (TOTAL PARENT SHEETS 7 TOTAL INSET SHEETS 9)



CENSUS TRACT OUTLINE MAP LEGEND (CENSUS 2000)

<u>SYMBOL DESCRIPTION</u>	<u>SYMBOL</u>	<u>NAME STYLE</u>
International	☆☆☆☆☆☆	CANADA
American Indian Reservation (Federal)	☆☆☆☆☆☆	L'ANSE RES (1880)
Off-Reservation Trust Land, Hawaiian Home Land	☆☆☆☆☆☆	T1880
Oklahoma Tribal Statistical Area, Alaska Native Village Statistical Area, Tribal Designated Statistical Area	◇◇◇◇◇◇◇◇	KAW OTSA (5340)
American Indian Tribal Subdivision	◆◆◆◆◆◆◆◆	SHONTO (620)
American Indian Reservation (State)	// // // // // //	Tama Res (4125)
State Designated American Indian Statistical Area	◇◇◇◇◇◇◇◇	Lumbee (9815)
Alaska Native Regional Corporation	▽ ▲ ▽ ▲ ▽ ▲ ▽	NANA ANRC 52120
State or Statistically Equivalent Entity	// // // // // //	NEW YORK 36
County or Statistically Equivalent Entity	■ ■ ■ ■ ■ ■ ■	ERIE 029
Minor Civil Division (MCD) ¹	⬢ ⬢ ⬢ ⬢ ⬢ ⬢ ⬢	PIKE TWP 59742
Census County Division (CCD)	⬢ ⬢ ⬢ ⬢ ⬢ ⬢ ⬢	KULA CCD 91890
Consolidated City	○ ○ ○ ○ ○ ○ ○	Milford 47500
Incorporated Place ¹		Rome 63418
Census Designated Place (CDP) ¹		Zena 84187
Census Tract		5702.01

<u>FEATURE</u>	<u>SYMBOL</u>	<u>FEATURE</u>	<u>SYMBOL</u>
All Roads		Perennial Stream or Shoreline	
Railroad		Intermittent Stream or Shoreline	
Pipeline or Power Line		Large River or Lake	
Ridge, Fence, or Other Physical Feature		Glacier	
Nonvisible Boundary or Feature Not Elsewhere Classified		Military Installation	
Inset Area		Outside Subject Area	

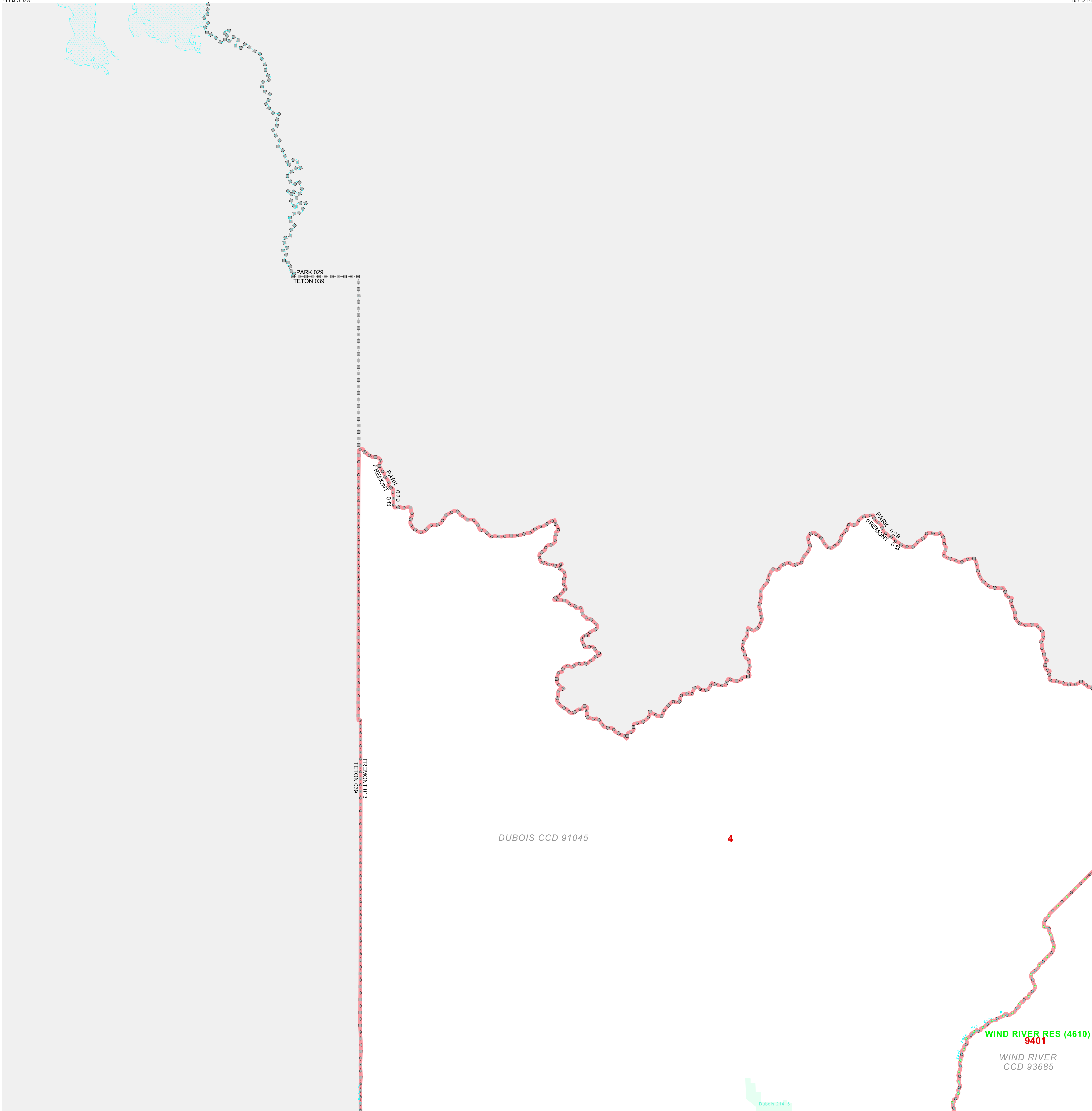
Where international, state, and/or county boundaries coincide, the map shows the boundary symbol for only the highest-ranking of these boundaries.

¹ A '*' following a place name indicates that the place is coextensive with a MCD. A '°' following an incorporated place name indicates that the place is also a false MCD. In both cases, the MCD name is shown only when it differs from the place name.

CENSUS TRACT OUTLINE MAP (CENSUS 2000)

44.328731N
110.420793W

44.328731N
109.320714W



ABBREVIATED LEGEND

SYMBOL	NAME STYLE
☆☆☆☆	INTERNATIONAL
*****	AIR (FEDERAL)
☆*☆*☆*	Trust Land
◆◆◆◆◆	OTSA / TDSA
●●●●●	TRIBAL SUBDIVISION
///////	AIR (State)
◇◇◇◇◇	SDA/SA
#####	STATE
■■■■■	COUNTY
○○○○○	CENSUS COUNTY DIV.
○●○○○	Consolidated City
■■■■■	Incorporated Place
■■■■■	Census Designated Place
■■■■■	Census Tract

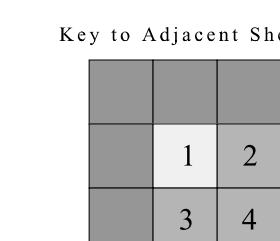
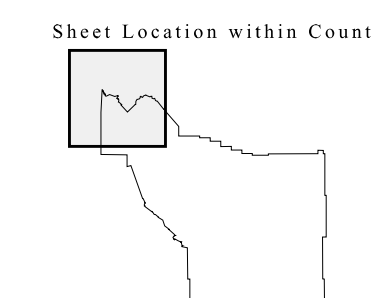
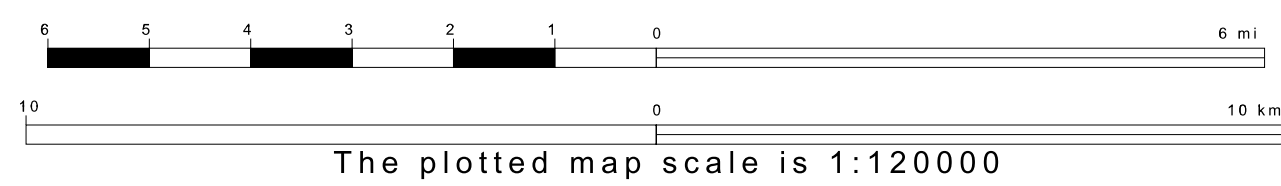
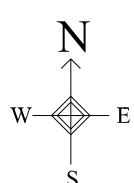
Abbreviation Reference: AIR = American Indian Reservation; Trust Land = Off-Reservation Trust Land; OTSA = Oklahoma Tribal Statistical Area; TDSA = Tribal Designated Statistical Area; Tribal Subdivision = American Indian Tribal Subdivision; SDA/SA = State Designated American Indian Statistical Area

FEATURES	FEATURES
All Roads	Stream/Shoreline
Spurroad	Intermittent Stream
Play/Poker Line	River/Lake
Physical Feature	Glacier
Navigable Boundary	
Military	

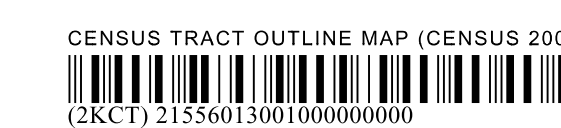
Inset Out Area

43.533081N
110.420793W

43.533081N
109.320714W



ST: Wyoming (56)
COU: Fremont (013)
SHEET 1 OF 7 PARENT SHEETS



CENSUS TRACT OUTLINE MAP (CENSUS 2000)

44 328731N
109 320718W

44 328731N
108 234343W

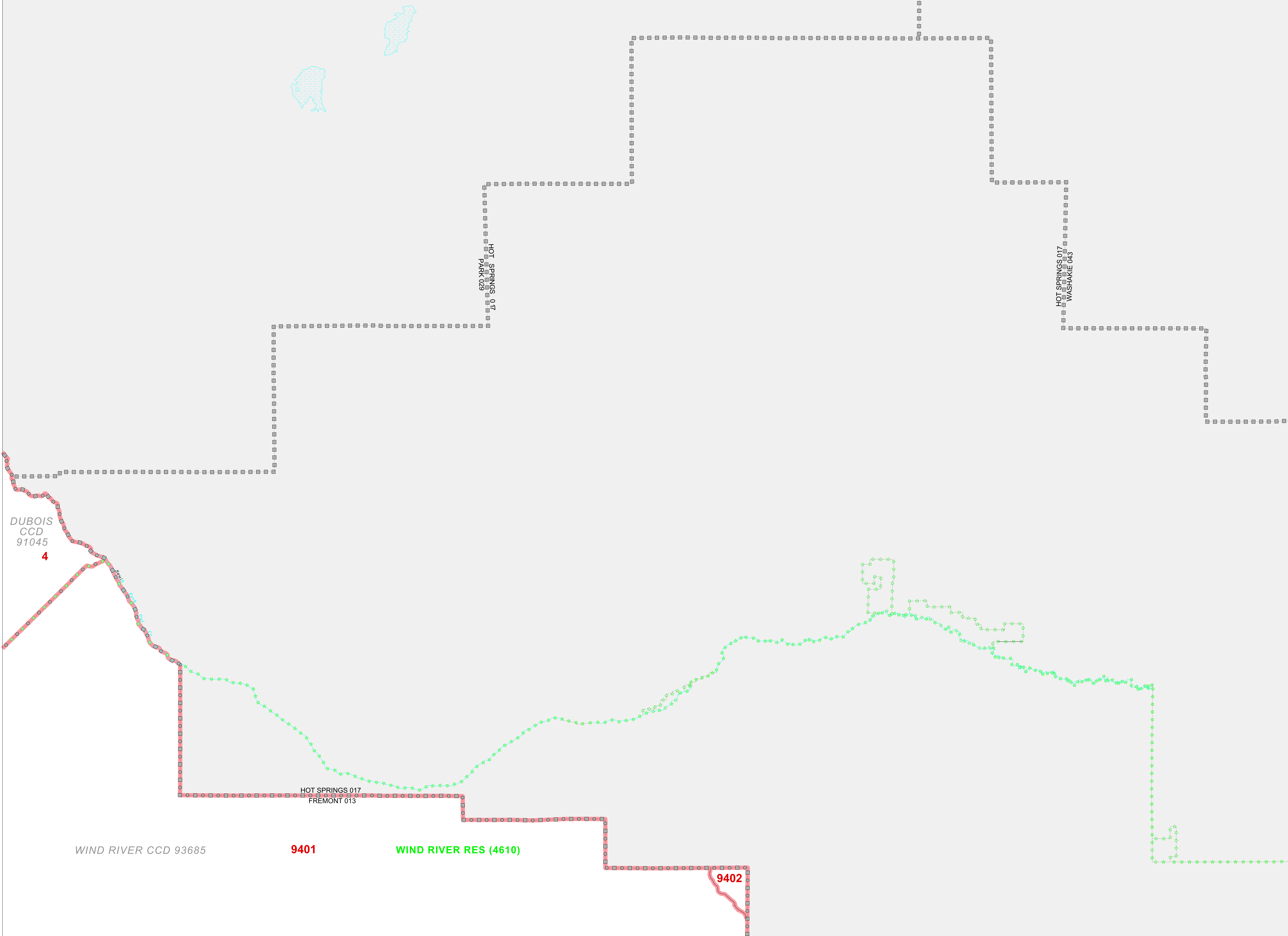
ABBREVIATED LEGEND

SYMBOL	NAME STYLE
*****	INTERNATIONAL
*****	AIR (FEDERAL)
*****	Trust Land
*****	OTSA / TDSA
*****	TRIBAL SUBDIVISION
*****	AIR (State)
*****	SDA/SA
*****	STATE
*****	COUNTY
*****	CENSUS COUNTY DIV.
*****	Consolidated City
*****	Incorporated Place
*****	Census Designated Place
*****	Census Tract

Abbreviation Reference: AIR = American Indian Reservation; Trust Land = Off-Reservation Trust Land; OTSA = Oklahoma Tribal Statistical Area; TDSA = Tribal Designated Statistical Area; Tribal Subdivision = American Indian Tribal Subdivision; SDA/SA = State Designated American Indian Statistical Area

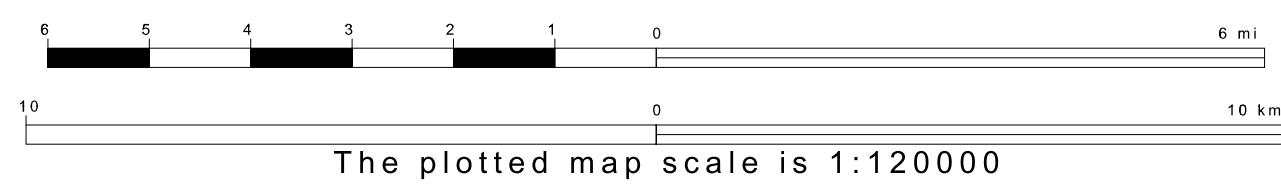
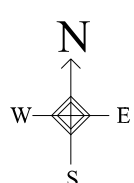
FEATURES	FEATURES
All Roads	Stream/Shoreline
Spurroad	Intermittent Stream
Play/Paver Line	River/Lake
Physical Feature	Glacier
Navigable Boundary	
Military	

Inset Out Area

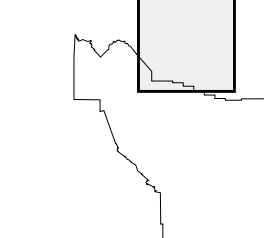


43 533081N
109 320718W

43 533081N
108 234343W



Sheet Location within County



Key to Adjacent Sheets

1	2
3	4

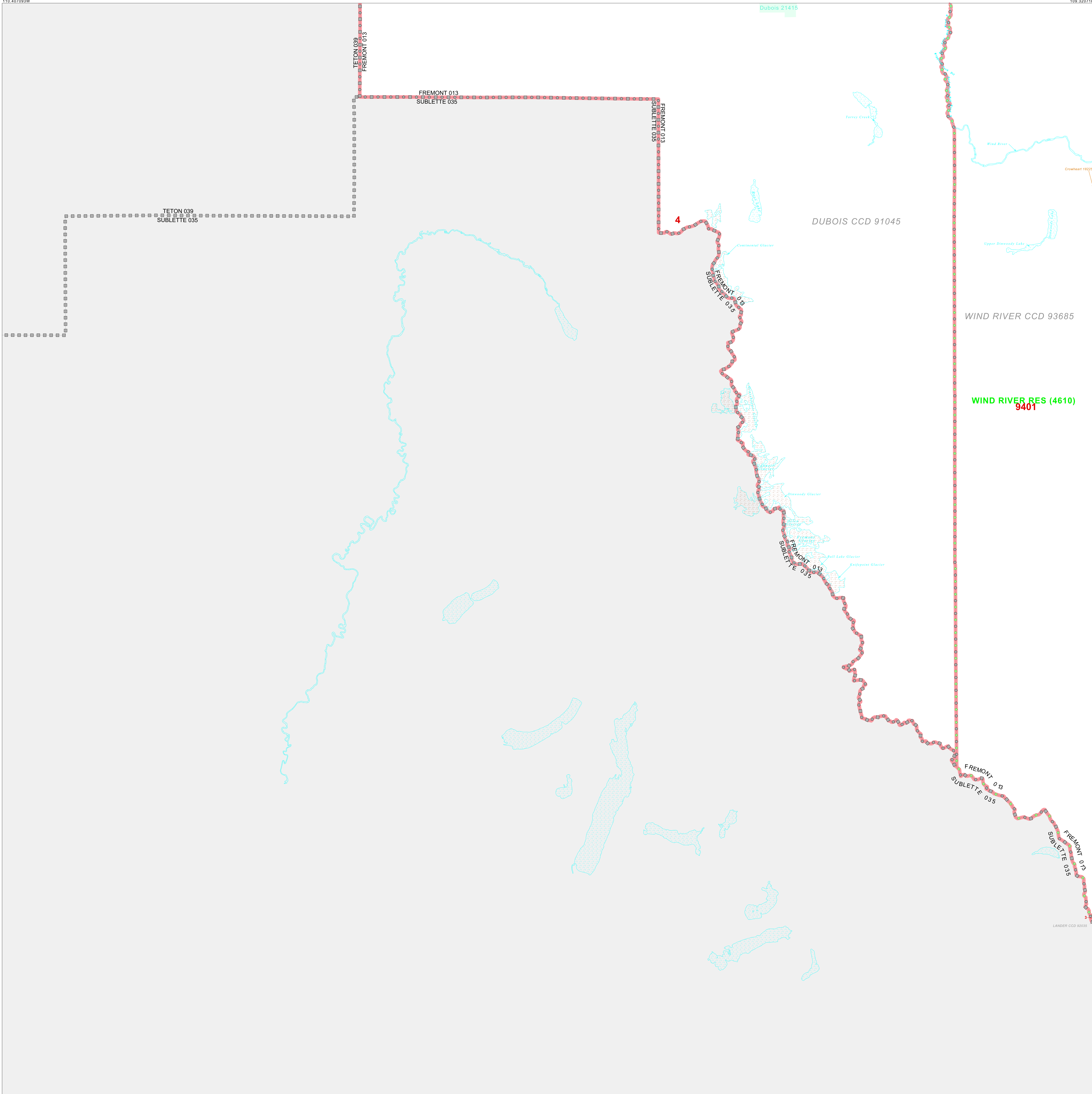
ST: Wyoming (56)
COU: Fremont (013)
SHEET 2 OF 7 PARENT SHEETS



CENSUS TRACT OUTLINE MAP (CENSUS 2000)

43.533081N
110.407093W

43.533081N
109.320718W



ABBREVIATED LEGEND

SYMBOL	NAME STYLE
*****	INTERNATIONAL
*****	AIR (FEDERAL)
*****	Trust Land
*****	OTSA / TDSA
*****	TRIBAL SUBDIVISION
*****	AIR (State)
*****	SDA/SA
#####	STATE
#####	COUNTY
#####	CENSUS COUNTY DIV.
#####	Consolidated City
#####	Incorporated Place
#####	Census Designated Place
#####	Census Tract

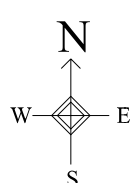
Abbreviation Reference: AIR = American Indian Reservation; Trust Land = DOI-Reservation Trust Land; OTSA = Oklahoma Tribal Statistical Area; TDSA = Tribal Designated Statistical Area; Tribal Subdivision = American Indian Tribal Subdivision; SDA/SA = State Designated American Indian Statistical Area

FEATURES	FEATURES
All Roads	Stream/Shoreline
Spurroad	Intermittent Stream
Play/Powr Line	River/Lake
Physical Feature	Glacier
Navigable Boundary	
Military	

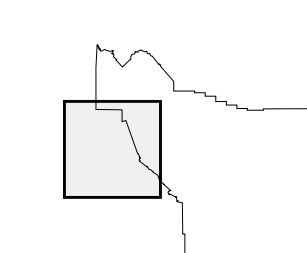
Inset Out Area

42.737431N
110.407093W

42.737431N
109.320718W



Sheet Location within County



Key to Adjacent Sheets

1	2
3	4
5	6

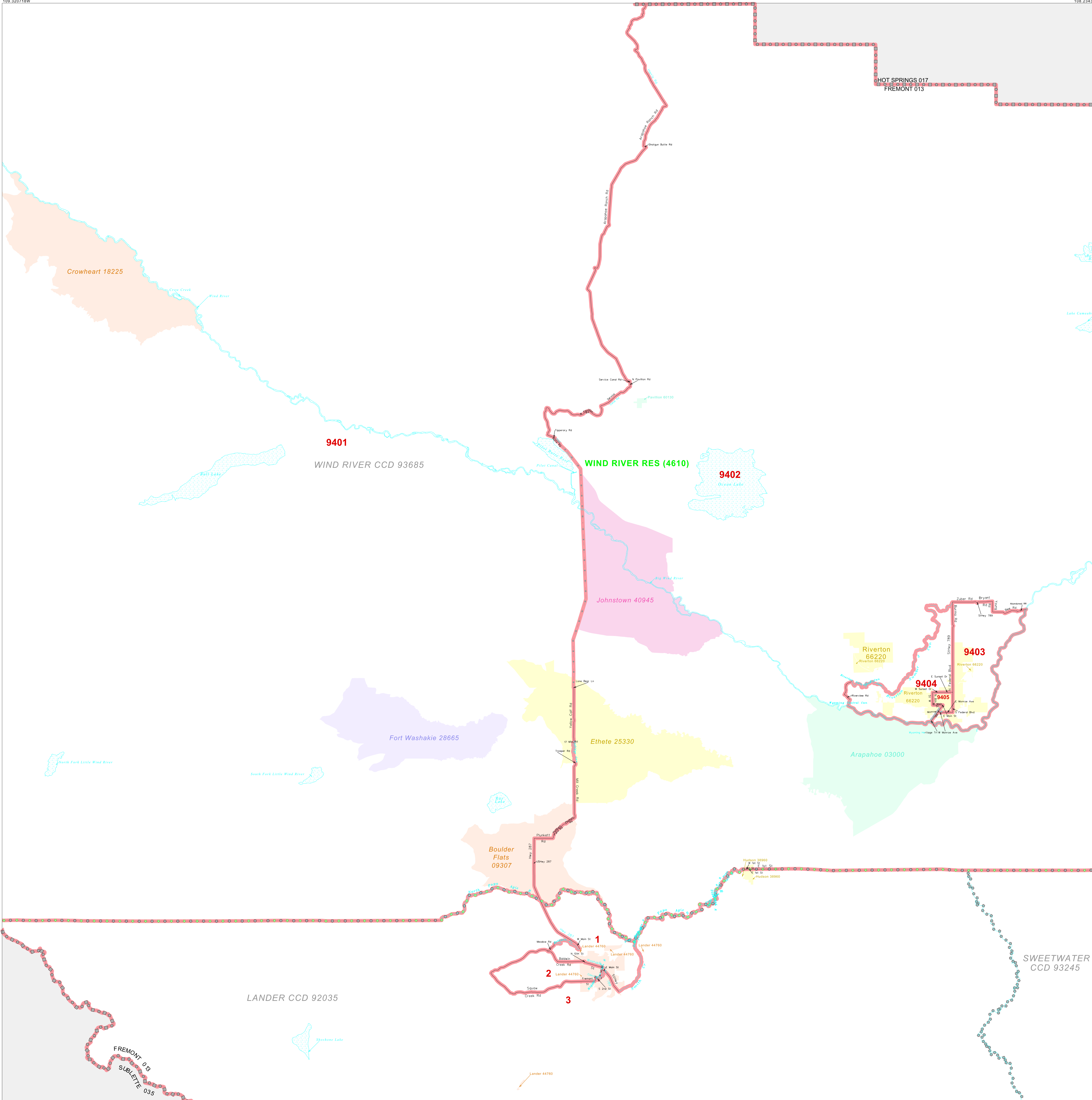
ST: Wyoming (56)
COU: Fremont (013)
SHEET 3 OF 7 PARENT SHEETS



CENSUS TRACT OUTLINE MAP (CENSUS 2000)

43 533081N
109 320718W

43 533081N
108 234343W



ABBREVIATED LEGEND

SYMBOL	NAME STYLE
*****	INTERNATIONAL
*****	AIR (FEDERAL)
*****	Trust Land
*****	OTSA / TDSA
*****	TRIBAL SUBDIVISION
*****	AIR (State)
*****	SDA/SA
*****	STATE
*****	COUNTY
*****	CENSUS COUNTY DIV.
*****	Consolidated City
*****	Incorporated Place
*****	Census Designated Place
*****	Census Tract

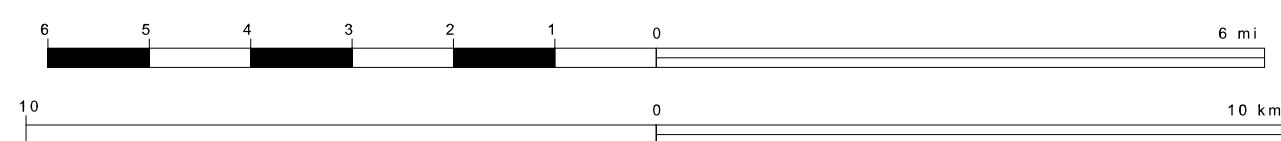
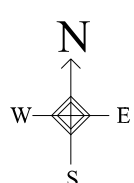
Abbreviation Reference: AIR = American Indian Reservation; Trust Land = Off-Reservation Trust Land; OTSA = Oklahoma Tribal Statistical Area; TDSA = Tribal Designated Statistical Area; Tribal Subdivision = American Indian Tribal Subdivision; SDA/SA = State Designated American Indian Statistical Area

FEATURES	FEATURES
All Roads	Stream/Shoreline
Spur Road	Intermittent Stream
Play/Poker Line	River/Lake
Physical Feature	Glacier
Navigable Boundary	
Military	

Inset Out Area

42 737431N
109 320718W

42 737431N
108 234343W



Sheet Location within County

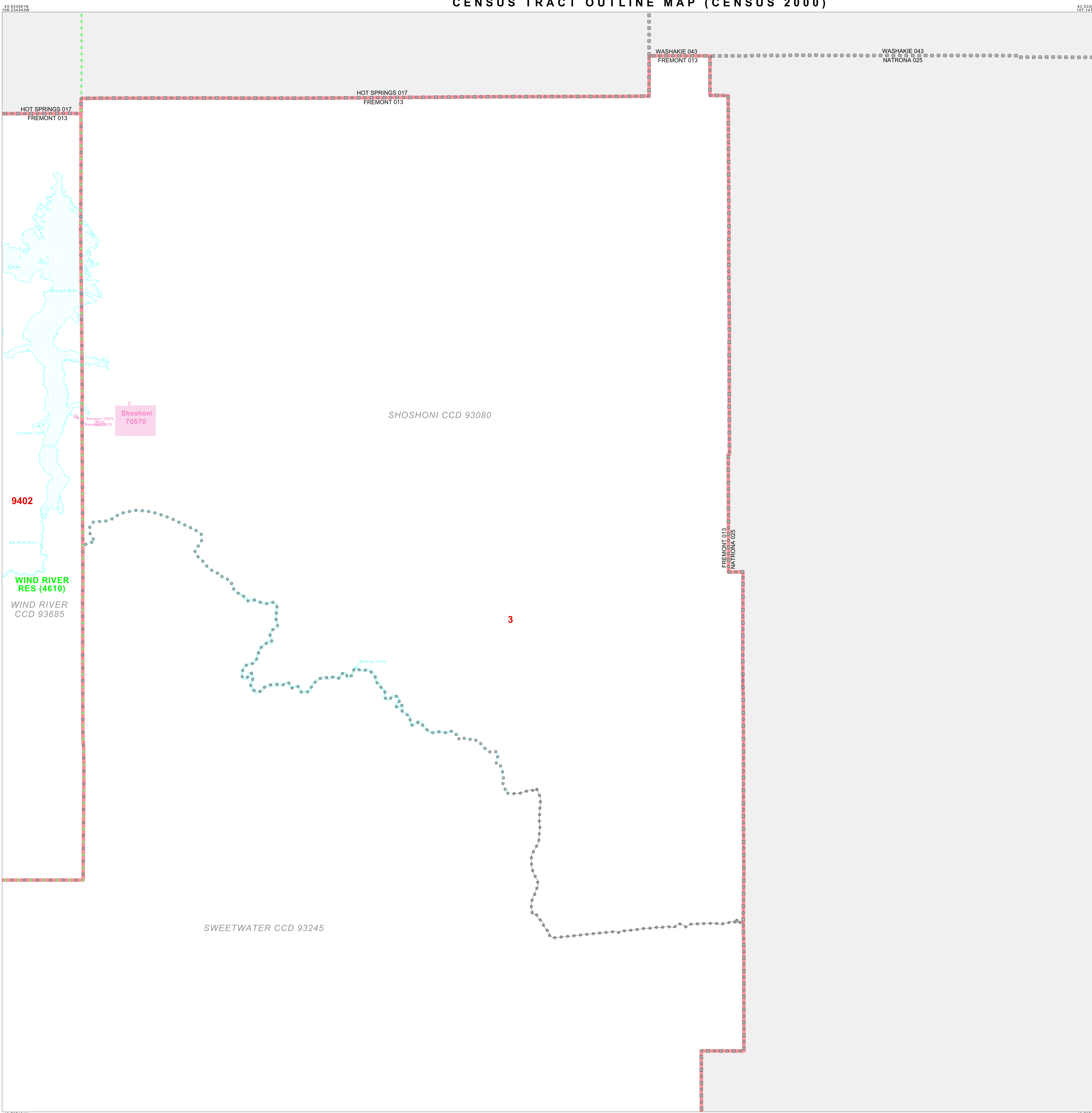
Key to Adjacent Sheets

1	2
3	4
6	7

ST: Wyoming (56)
COU: Fremont (013)
SHEET 4 OF 7 PARENT SHEETS



CENSUS TRACT OUTLINE MAP (CENSUS 2000)



ABBREVIATED LEGEND

SYMBOL	NAME STYLE
*****	INTERNATIONAL
*****	AIR (FEDERAL)
*****	Trust Land
*****	OTSA / TDSA
*****	TRIBAL SUBDIVISION
*****	AIR (State)
*****	SDA/SA
*****	STATE
*****	COUNTY
*****	CENSUS COUNTY DIV.
*****	Consolidated City
*****	Incorporated Place
*****	Census Designated Place
*****	Census Tract

Abbreviation Reference: AIR = American Indian Reservation; Trust Land = Off-Reservation Trust Land; OTSA = Oklahoma Tribal Statistical Area; TDSA = Tribal Designated Statistical Area; Tribal Subdivision = American Indian Tribal Subdivision; SDA/SA = State Designated American Indian Statistical Area

FEATURES	FEATURES
All Roads	Stream/Shareline
Epiroad	Intermittent Stream
Play/Paver Line	River/Lake
Physical Feature	Glacier
Navigable Boundary	
Military	

Inset Out Area

42 737431N
108 234343W

The plotted map scale is 1:120000

Sheet Location within County

Key to Adjacent Sheets

2	
4	5
6	7

42 737431N
107 147968W

All legal boundaries and names are as of January 1, 2000. The boundaries shown on this map are for Census Bureau statistical data collection and tabulation purposes only; their depiction and designation for statistical purposes does not constitute a determination of jurisdictional authority or rights of ownership or entitlement. U.S. DEPARTMENT OF COMMERCE Economics and Statistics Administration U.S. Census Bureau

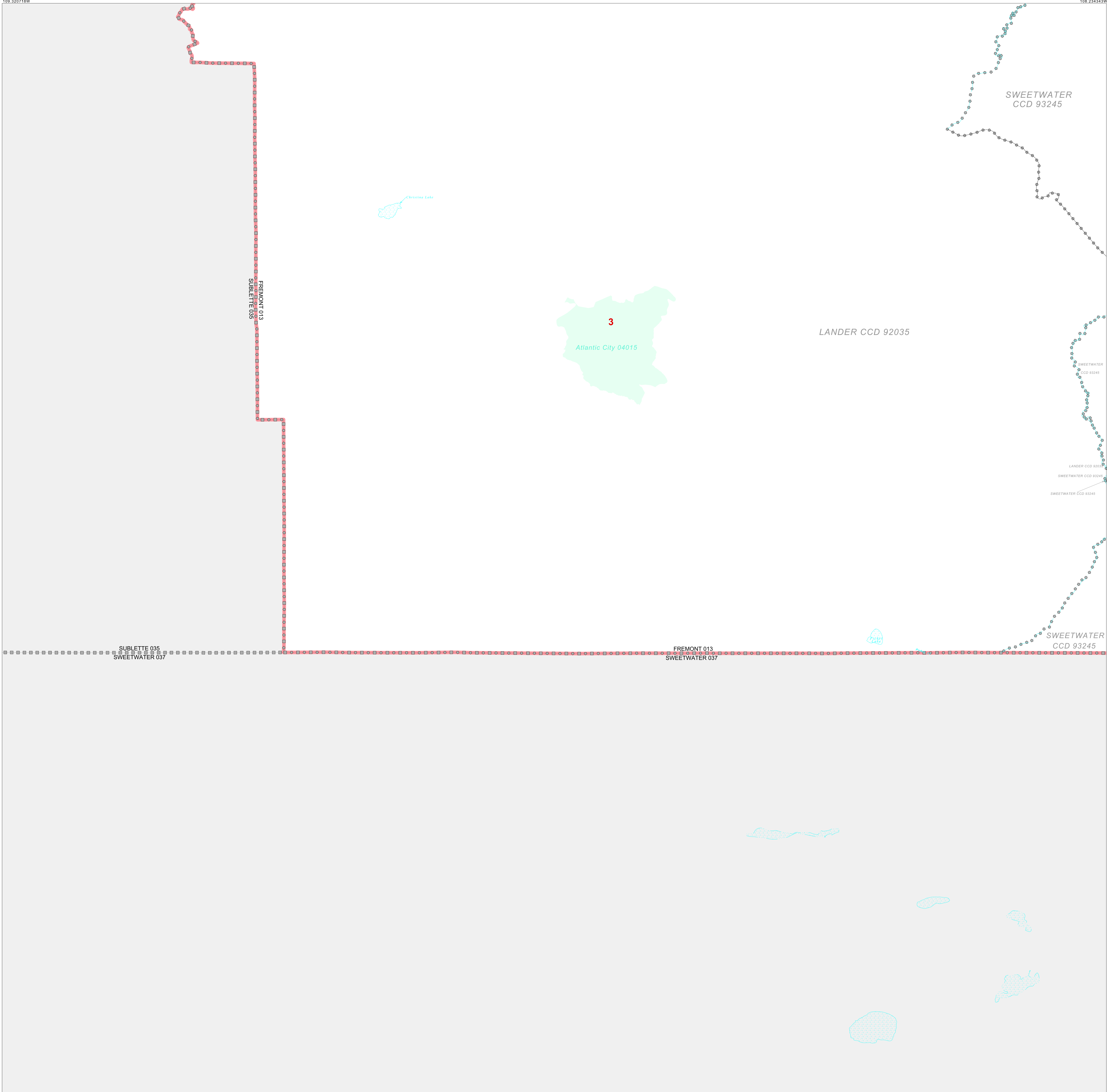
ST: Wyoming (56)
COU: Fremont (013)
SHEET 5 OF 7 PARENT SHEETS

GENSUS TRACT OUTLINE MAP (CENSUS 2000)
(3KCT) 2155601300500000000

CENSUS TRACT OUTLINE MAP (CENSUS 2000)

42 737431N
109 320718W

42 737431N
108 234343W



ABBREVIATED LEGEND

SYMBOL	NAME STYLE
*****	INTERNATIONAL
*****	AIR (FEDERAL)
*****	Trust Land
*****	OTSA / TDSA
*****	TRIBAL SUBDIVISION
*****	AIR (State)
*****	SDA/SA
*****	STATE
*****	COUNTY
*****	CENSUS COUNTY DIV.
*****	Consolidated City
*****	Incorporated Place
*****	Census Designated Place
*****	Census Tract

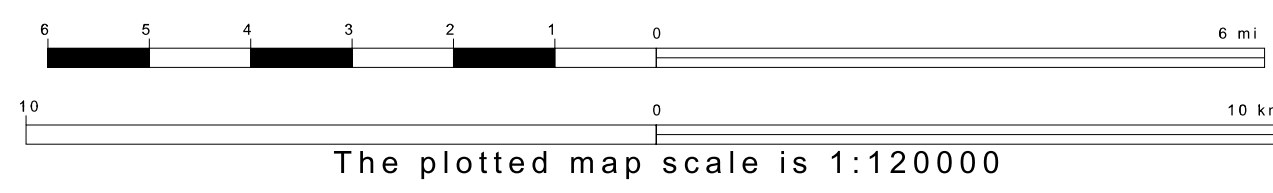
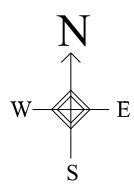
Abbreviation Reference: AIR = American Indian Reservation; Trust Land = Off-Reservation Trust Land; OTSA = Oklahoma Tribal Statistical Area; TDSA = Tribal Designated Statistical Area; Tribal Subdivision = American Indian Tribal Subdivision; SDA/SA = State Designated American Indian Statistical Area

FEATURES	FEATURES
All Roads	Stream/Shoreline
Epiroad	Intermittent Stream
Play/Paver Line	River/Lake
Physical Feature	Glacier
Navigable Boundary	
Military	

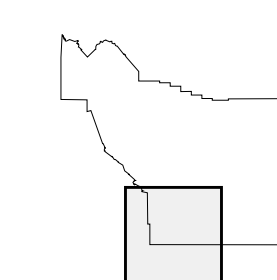
Inset Out Area

41 941782N
109 320718W

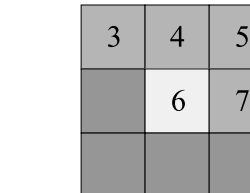
41 941782N
108 234343W



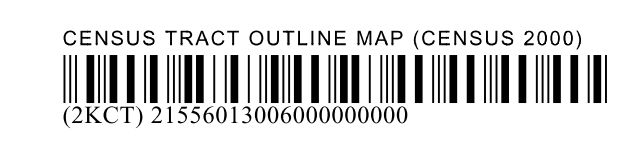
Sheet Location within County



Key to Adjacent Sheets



ST: Wyoming (56)
COU: Fremont (013)
SHEET 6 OF 7 PARENT SHEETS



CENSUS TRACT OUTLINE MAP (CENSUS 2000)

42 737431N
108 234343W

42 737431N
107 147968W

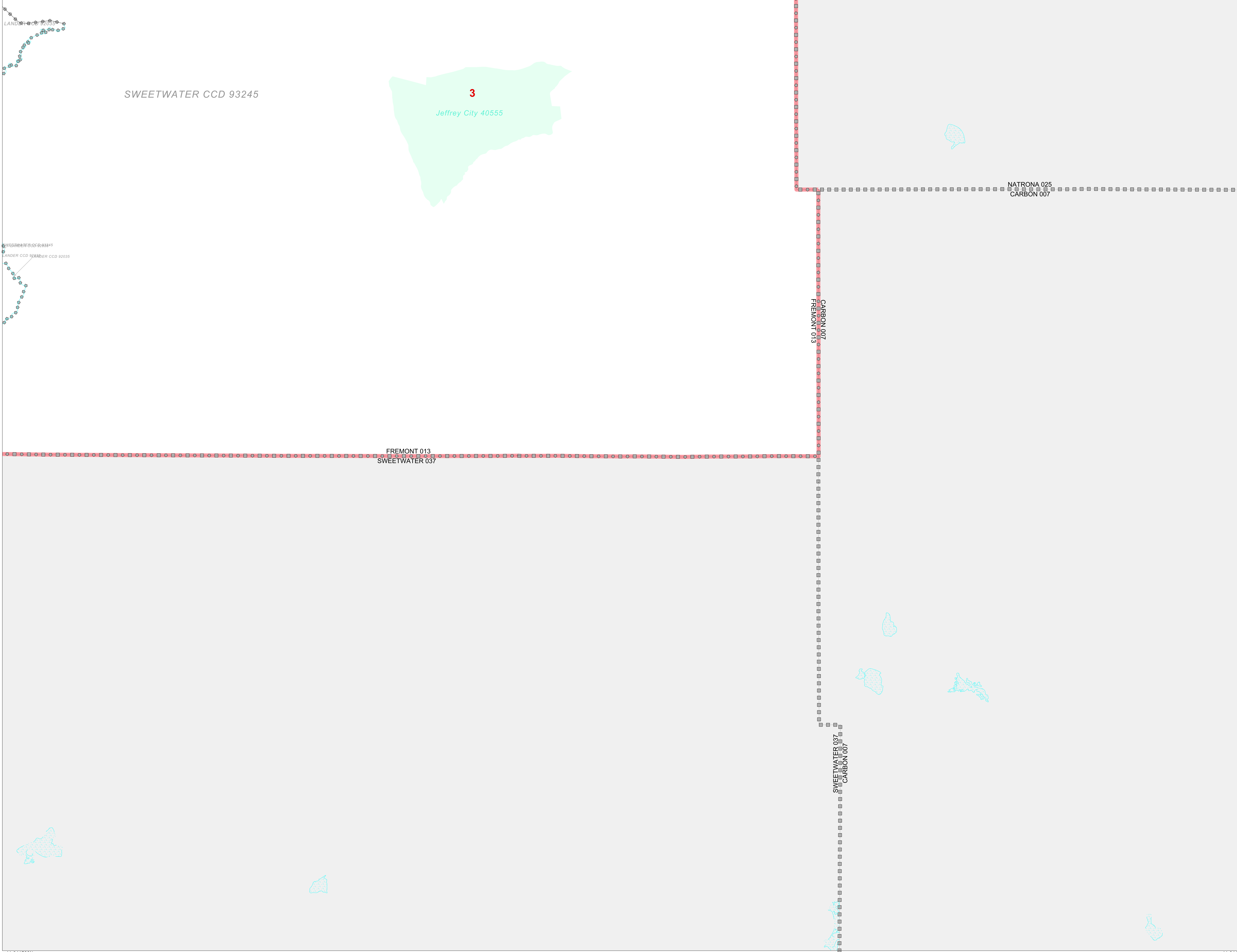
ABBREVIATED LEGEND

SYMBOL	NAME STYLE
☆☆☆☆☆	INTERNATIONAL
☆☆☆☆☆	AIR (FEDERAL)
☆☆☆☆☆	Trust Land
◇◇◇◇◇	OTSA / TDSA
◇◇◇◇◇	TRIBAL SUBDIVISION
///////	AIR (State)
◇◇◇◇◇	SDA/SA
#####	STATE
#####	COUNTY
○○○○○	CENSUS COUNTY DIV.
○○○○○	Consolidated City
■■■■■	Incorporated Place
■■■■■	Census Designated Place
■■■■■	Census Tract

Abbreviation Reference: AIR = American Indian Reservation; Trust Land = Off-Reservation Trust Land; OTSA = Oklahoma Tribal Statistical Area; TDSA = Tribal Designated Statistical Area; Tribal Subdivision = American Indian Tribal Subdivision; SDA/SA = State Designated American Indian Statistical Area

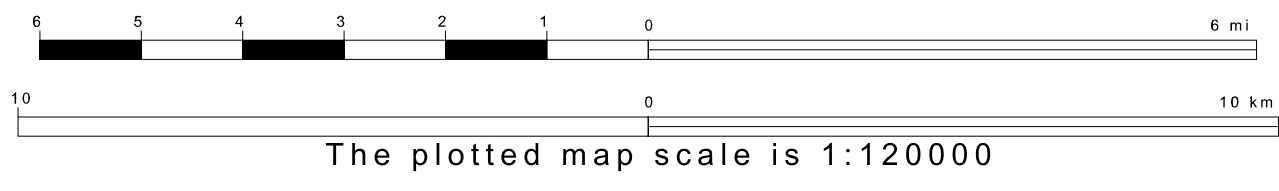
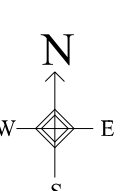
FEATURES	FEATURES
All Roads	Stream/Shoreline
Spurroad	Intermittent Stream
Flow/Power Line	River/Lake
Physical Feature	Glacier
Navigable Boundary	
Military	

Inset Out Area

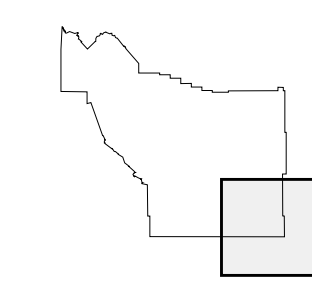


41 941782N
108 234243W

41 941782N
107 147968W



Sheet Location within County



Key to Adjacent Sheets

4	5
6	7

ST: Wyoming (56)
COU: Fremont (013)
SHEET 7 OF 7 PARENT SHEETS

